



Tuvalu Railway Station Uses Earthquake-Resistant Mobile Energy Storage Containers





Tuvalu Railway Station Uses Earthquake-Resistant Mobile Energy Storage



Tuvalu Factsheet

News & Stories Center for the Study of Intelligence (CSI) The World Factbook World Leaders The Langley Files Spy Kids

Tuvalu Maps & Facts

One of the smallest nations in the world, Tuvalu is a collection of small islands and atolls largely made out of coral reefs and volcanic rock. Isolated from its neighbors, Tuvalu is ...



Tuvalu

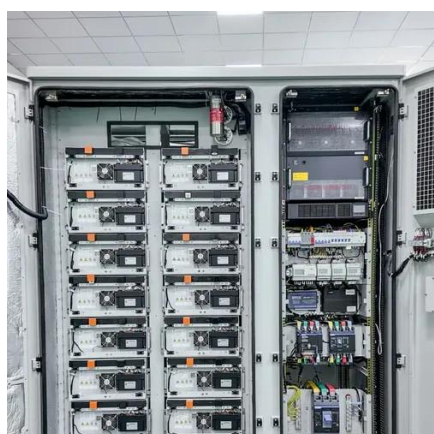
A virtual guide to Tuvalu, formerly known as the Ellice Islands, a Polynesian island nation located in the Central Pacific Ocean just below the equator and about 1,000 km north of Fiji and about ...

Timeless Tuvalu - Welcome to the official tourism site for island

As one of the smallest and most remote nations in the world, this unspoiled corner of the Pacific offers a peaceful, and non-commercialized



environment that is ideal for rest and relaxation.



Tuvalu , Population, Map, Currency, Language, Capital, & Size

Tuvalu, country in the west-central Pacific Ocean. It is composed of nine small coral islands scattered in a chain lying approximately northwest to southeast over a distance of ...

Tuvalu - Travel guide at Wikivoyage

Tuvalu is a group of low-lying islands and atolls in the South Pacific that form the fourth smallest country in the world. It is one of the most isolated and remote independent countries in the world.



Tuvalu , United Nations in Fiji, Solomon Islands, Tonga, Tuvalu, ...

Tuvalu is a Polynesian island country, comprising nine dispersed, low-lying islets and atolls in the South Pacific Ocean. It is the 4th smallest country in the world with 26 km² of land across



Tuvalu

Tuvalu was first seen by Europeans on 16 January 1568, during the voyage of Álvaro de Mendaña from Spain. He sailed past Nui and named it Isla de Jesús (Spanish for "Island of Jesus") ...



Tuvalu , Culture, Facts & Travel ,

Tuvalu is a South Pacific island nation consisting of four reef islands and five atolls. A self-governing member of the British Commonwealth, Tuvalu has a parliamentary system of ...

Tuvalu

Tuvalu (/ tu:'v?:lu: / (i) too-VAH-loo) [6] is an island country in the Polynesian sub-region of Oceania in the Pacific Ocean, about midway between Hawaii and Australia.





Contact Us

For inquiries, pricing, or partnerships:

<https://sccd-sk.eu>

Phone: +32 2 808 71 94

Email: info@sccd-sk.eu

Scan QR code for WhatsApp.

