



What are the base station wireless communication devices





Overview

A base transceiver station (BTS) or a baseband unit (BBU) is a piece of equipment that facilitates between (UE) and a network. UEs are devices like (handsets), phones, computers with connectivity, or antennas mounted on buildings or telecommunication towers. The network can be that of any of the wireless communication technologies like , , , or other

Simply put, a base station (BS) is a wireless transceiver device in a mobile communication network that provides wireless coverage and communicates with mobile terminals like your phone. It acts as a bridge, connecting your phone to a vast communication network to ensure smooth.

Simply put, a base station (BS) is a wireless transceiver device in a mobile communication network that provides wireless coverage and communicates with mobile terminals like your phone. It acts as a bridge, connecting your phone to a vast communication network to ensure smooth.

The present-day tele-space is incomplete without the base stations as these constitute an important part of the modern-day scheme of wireless communications. They are referred to as cell towers or cellular antennas. These types of objects are an inevitability since they serve the purpose of.

A base station, also known as a cell tower or base transceiver station (BTS), is a crucial component of wireless communication networks. It serves as the central point for communication between mobile devices and the rest of the network. Base stations are used in various wireless communication.

A base transceiver station (BTS) or a baseband unit[1] (BBU) is a piece of equipment that facilitates wireless communication between user equipment (UE) and a network. UEs are devices like mobile phones (handsets), WLL phones, computers with wireless Internet connectivity, or antennas mounted on.

A base station plays a pivotal role in the realm of telecommunications, acting as the cornerstone of connectivity. It enables seamless communication by linking various wireless devices to broader networks, ensuring that data flows efficiently from one point to another. A base station is an integral.

A base station is a critical component of wireless communication networks. It serves as the central point of a network that connects various devices, such as



smartphones, tablets, and computers. The base station transmits and receives signals, ensuring seamless communication over radio frequencies.

They are communication hubs in a cellular network that ensure continuous service as users move throughout a geographical area. What is a Base Station?

A base station is a fixed transceiver that serves as the central communication point for mobile devices within a defined geographical area, known as.



What are the base station wireless communication devices



Base Station's Role in Wireless Communication Networks

What is a base station? A base station is a critical component of wireless communication networks. It serves as the central point of a network that connects various devices, such as ...

Base Station's Role in Wireless Communication Networks

What is a base station? A base station is a critical component of wireless communication networks. It serves as the central point of a network that connects various ...



What is a base station?

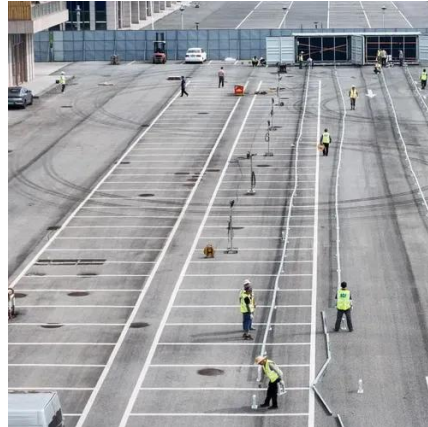
In telecommunications, a base station is a fixed transceiver that is the main communication point for one or more wireless mobile client devices. A base station serves as ...

Understanding Base Stations: The Backbone of Wireless Communication

In cellular networks, a base station typically consists of antennas, a transmitter/receiver



system, and a base station controller (BSC). The base station is ...



What is a Base Station? -- From Communication Core to ...

Receiving and transmitting signals: The base station is both the transmitter and receiver of mobile phone signals. Network access: It converts wireless signals ...

What Is A Base Station?

The base station in a Wi-Fi network is a device that connects to an internet service provider (ISP) and enables wireless communication between devices such as computers, ...



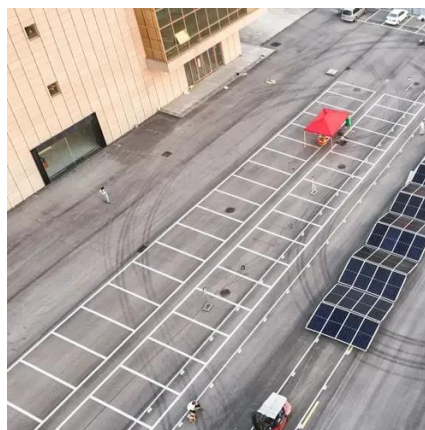
Base transceiver station

A base transceiver station (BTS) or a baseband unit[1] (BBU) is a piece of equipment that facilitates wireless communication between user equipment (UE) and a network.



Understanding Base Stations: The Backbone of Wireless ...

In cellular networks, a base station typically consists of antennas, a transmitter/receiver system, and a base station controller (BSC). The base station is ...



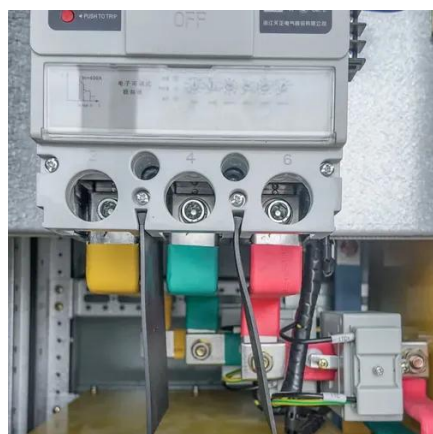
Base Stations

A base station represents an access point for a wireless device to communicate within its coverage area. It usually connects the device to other networks or devices through a ...



What Is the Role of a Base Station in Wireless Communication?

Base stations are critical components in wireless communication networks, serving as the intermediary between mobile devices and the core network. They play a vital role in ...



What is a base station?

In telecommunications, a base station is a fixed transceiver ...



What is a Base Station? -- From Communication ...

Receiving and transmitting signals: The base station is both the transmitter and receiver of mobile phone signals. Network access: It ...



What Is a Base Station? Definition and How It Works

A base station is a fixed transceiver that serves as the central communication point for mobile devices within a defined geographical area, known as a cell. It is sometimes called ...



What Is Base Station In Wireless Communication?

A base station, also known as a cell tower or base transceiver station (BTS), is a crucial component of wireless communication networks. It serves as the central point for ...



Base transceiver station

A base transceiver station (BTS) or a baseband unit (BBU) is a piece of equipment that facilitates wireless communication between user equipment (UE) and a network. UEs are devices like mobile phones (handsets), WLL phones, computers with wireless Internet connectivity, or antennas mounted on buildings or telecommunication towers. The network can be that of any of the wireless communication technologies like GSM, CDMA, wireless local loop, Wi-Fi, WiMAX or other





Contact Us

For inquiries, pricing, or partnerships:

<https://sccd-sk.eu>

Phone: +32 2 808 71 94

Email: info@sccd-sk.eu

Scan QR code for WhatsApp.

