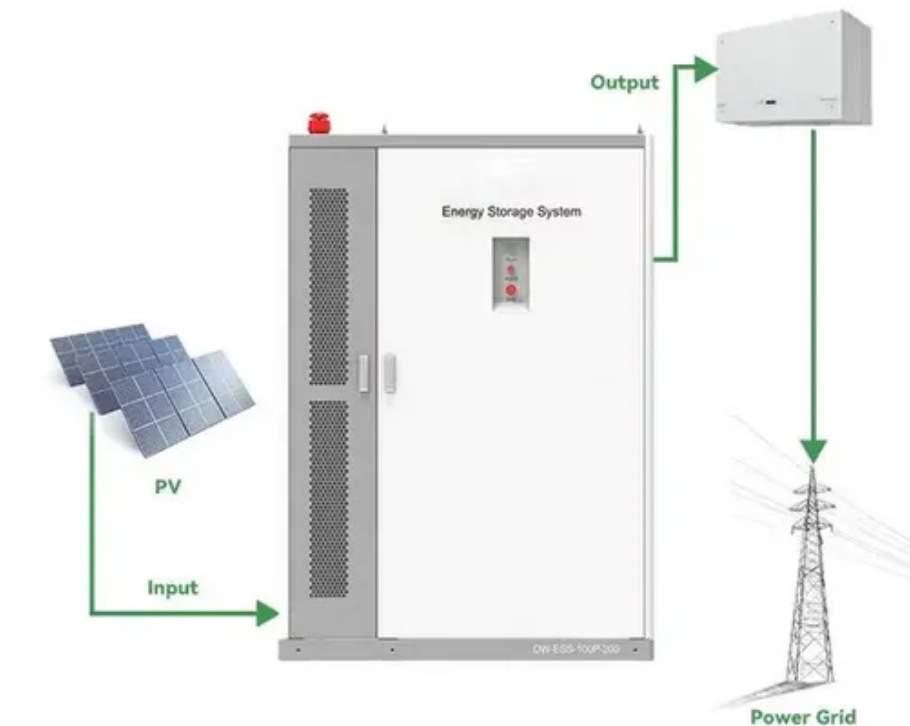




What are the outdoor power supplies with large usage





Overview

This guide covers top-rated models with substantial battery capacities, fast charging, and versatile output options, suitable for powering a wide range of devices. Below is a summary table of selected power stations reviewed in this article: [Check Price on Amazon](#).

This guide covers top-rated models with substantial battery capacities, fast charging, and versatile output options, suitable for powering a wide range of devices. Below is a summary table of selected power stations reviewed in this article: [Check Price on Amazon](#).

When you're planning your next outdoor adventure, having a reliable power source can make all the difference. The 10 best outdoor power stations of 2024 offer a range of options, from portable units for light use to more robust models designed for heavy-duty applications. As you consider factors.

Finding a robust and dependable large portable power station can make a big difference during power outages, camping, or remote adventures. This guide covers top-rated models with substantial battery capacities, fast charging, and versatile output options, suitable for powering a wide range of.

Selecting the right outdoor power supply is crucial for ensuring that your outdoor activities or equipment function smoothly, whether it's for camping, remote work, outdoor events, or powering devices like solar streetlights, tools, or appliances. With various options available, it's important to.

Expand delta max capacity up to 6048W with two delta max smart extra batteries and giving you more backup power during emergencies. Bluetti is committed to offering dependable, powerful and long-lasting power sources for outdoor adventurers, recreational activities, and any emergency situation. We.

The power capacity of the outdoor power supply is a primary consideration. Here's how to determine which one suits your needs: 500W to 1000W Power: Ideal for small devices such as laptops, phones, and small appliances like mini fridges or lights during camping. 1000W to 1500W Power: Suitable for.

Outdoor DC power supply products serve a myriad of applications ranging from



powering remote installations to ensuring smooth operation of outdoor equipment. Whether you're a DIY enthusiast, a seasoned professional in the electrical industry, or a homeowner looking to improve your garden lighting.



What are the outdoor power supplies with large usage



The Best Portable Power Station

This unit offers lots of power in a portable, durable, easy-to-use package. Plus, it has a wide array of outlets and charging ports to keep your essential devices running off-grid.

[Choosing the Right Outdoor Power Supply for Your Needs](#)

Discover how to choose the ideal outdoor power supply for your needs, exploring options like portable generators and solar power banks.



Best Large Portable Power Stations for Reliable Outdoor and ...

Finding a robust and dependable large portable power station can make a big difference during power outages, camping, or remote adventures. This guide covers top-rated ...

[Portable Power Stations for Camping & Home Backup , Lowe's](#)

Stay charged during outdoor adventures or power outages with portable power stations from Lowe's. Browse our wide selection and power up with ease

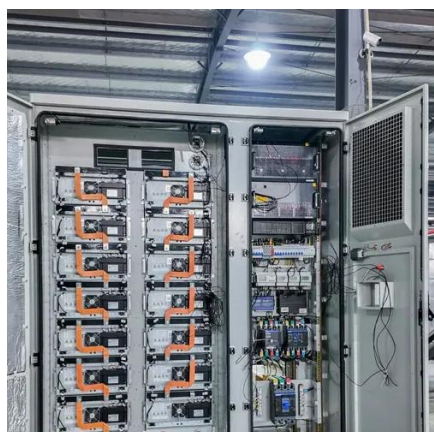


today.



Best Large Portable Power Stations for Reliable Outdoor and Emergency Power

Finding a robust and dependable large portable power station can make a big difference during power outages, camping, or remote adventures. This guide covers top-rated ...



[How to Choose an Outdoor Power Supply in 2025: From ...](#)

1000W to 1500W Power: Suitable for medium power requirements, such as powering larger devices, electric grills, small power tools, or more power-hungry appliances. 1500W to ...



The Best Portable Power Station

The 10 best outdoor power stations of 2024 offer a range of options, from portable units for light use to more robust models designed for heavy-duty applications.





[How to choose an outdoor power supply?](#)

Discover how to choose the right outdoor power supply with Topwell Power's guide. Explore their LiFePO4 battery 500W power supply with USB Type A, Type C, and car charger ...

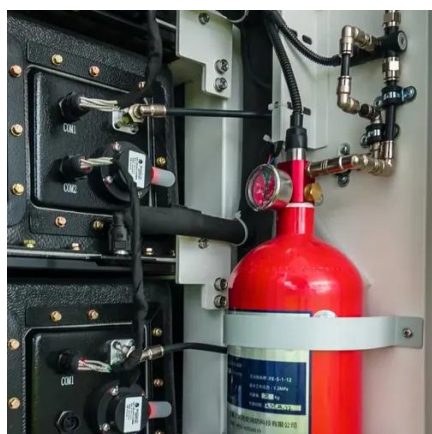
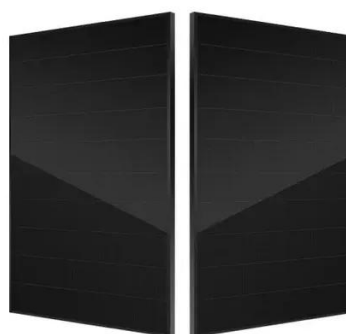


[The 10 Best Outdoor Power Stations of 2025](#)

The 10 best outdoor power stations of 2024 offer a range of options, from portable units for light use to more robust models designed for heavy-duty applications.

[The Ultimate Guide to Choosing Outdoor DC Power Supply ...](#)

In conclusion, selecting the right outdoor DC power supply involves understanding your specific needs, the environment in which it will operate, and the products available. By considering the ...



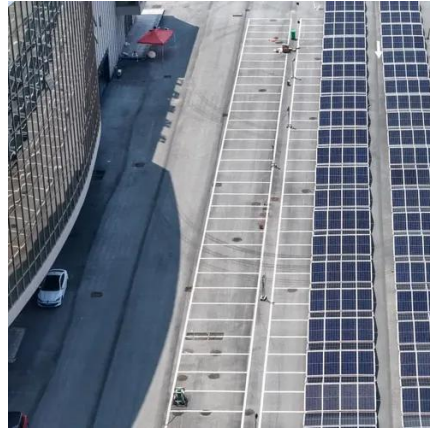
[How to Choose the Right Outdoor Power Supply](#)

Find out how to select the ideal outdoor power supply for camping, work, emergencies, and more with this easy-to-follow expert guide.



10 Best Portable Power Stations (2025): Power Capacity

Whether you're going off-grid or safeguarding against blackouts, the best portable power stations, WIRED-tested, can keep the lights on.





Contact Us

For inquiries, pricing, or partnerships:

<https://sccd-sk.eu>

Phone: +32 2 808 71 94

Email: info@sccd-sk.eu

Scan QR code for WhatsApp.

