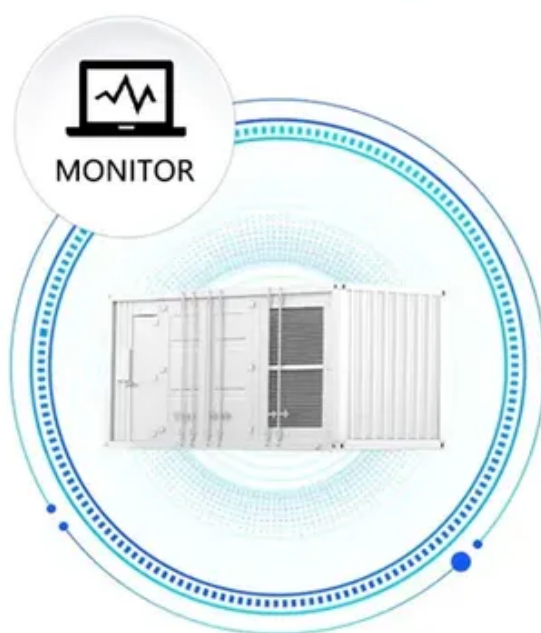




# What are the outdoor power supplies with sufficient power

SUPPORT REAL-TIME ONLINE  
MONITORING OF SYSTEM STATUS





## Overview

---

Portable power stations or power banks with a lower wattage (around 100W to 500W) are sufficient. Larger Devices: Power tools, refrigerators, and other high-wattage appliances require more significant power supplies (ranging from 500W to several thousand watts).

Portable power stations or power banks with a lower wattage (around 100W to 500W) are sufficient. Larger Devices: Power tools, refrigerators, and other high-wattage appliances require more significant power supplies (ranging from 500W to several thousand watts).

Selecting the right outdoor power supply is crucial for ensuring that your outdoor activities or equipment function smoothly, whether it's for camping, remote work, outdoor events, or powering devices like solar streetlights, tools, or appliances. With various options available, it's important to.

What is an Outdoor power supply?

An outdoor power supply is a portable device designed to provide electrical power in locations where access to the grid is limited or unavailable. These power supplies come in various forms, including portable generators, solar power stations, and battery packs.

Whether you need to charge your devices while off the grid or ensure a reliable power source during a power outage, selecting a power supply that suits your needs is essential. With output capacities ranging from 500W to 2500W, there are various options available for different use cases. Here's a.

How to choose an outdoor power supply?

Outdoor portable power stations are very popular now. 500W or 1000W outdoor power supplies, which is more suitable?

To be honest, the high-power ones are very cool to use, but the weight and volume have also increased. Unless you are driving out to play, it is.

Outdoor DC power supply products serve a myriad of applications ranging from



powering remote installations to ensuring smooth operation of outdoor equipment. Whether you're a DIY enthusiast, a seasoned professional in the electrical industry, or a homeowner looking to improve your garden lighting.

Outdoor power supply, actually called outdoor mobile power, is equivalent to a portable charging station. The main feature is the configuration of various types of output ports: 1. USB and TypeC can charge general digital devices. 2. Car charger interface, you can charge the car battery, or other.



## What are the outdoor power supplies with sufficient power

---



### Best Portable Outdoor Power Supply Options for Camping and ...

Power outages and outdoor adventures demand reliable, portable energy. The following five models offer different balances of capacity, weight, and versatility to fit camping ...

### Bringing The Indoors Out: The Ultimate Guide to Outdoor Power ...

Outdoor power and charging solutions have become more versatile and efficient, catering to the needs of a variety of applications and end-users. Learn how to best select the right outdoor ...



### [Bringing The Indoors Out: The Ultimate Guide to ...](#)

Outdoor power and charging solutions have become more versatile and efficient, catering to the needs of a variety of applications and end-users. ...

### [How to choose an outdoor power supply?](#)

Discover how to choose the right outdoor power supply with Topwell Power's guide. Explore their LiFePO4 battery 500W power supply with USB Type A, Type C, and car charger ...



## [How to Choose the Right Outdoor Power Supply](#)

Find out how to select the ideal outdoor power supply for camping, work, emergencies, and more with this easy-to-follow expert guide.



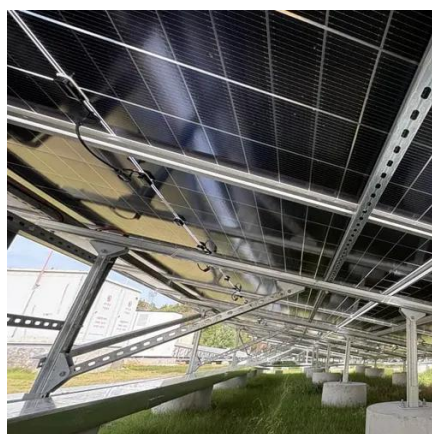
## [The Ultimate Guide to Choosing Outdoor DC Power Supply ...](#)

In conclusion, selecting the right outdoor DC power supply involves understanding your specific needs, the environment in which it will operate, and the products available. By considering the ...



## [How to choose an outdoor power supply?](#)

How to choose an outdoor power supply? The only purpose of this article is to save your time with the data I have compiled and to ...





## Outdoor Power Sources

Power up your outdoor adventures with our diverse selection of outdoor power sources. Whether you're planning a camping trip, setting up an outdoor event, or simply enjoying a day in the ...



### Choosing the Right Outdoor Power Supply for Your Needs

Discover how to choose the ideal outdoor power supply for your needs, exploring options like portable generators and solar power banks.

## Outdoor Power Supply The Ultimate Guide for Reliable Energy ...

This article will provide a comprehensive overview of outdoor power supplies, their benefits, and key features to consider when choosing the right one for your needs.



### How to Choose an Outdoor Power Supply in 2025: From ...

500W to 1000W Power: Ideal for small devices such as laptops, phones, and small appliances like mini fridges or lights during camping. 1000W to 1500W Power: Suitable for ...





## [How to choose an outdoor power supply?](#)

Discover how to choose the right outdoor power supply with Topwell Power's guide. Explore their LiFePO4 battery 500W power ...



## [How to choose an outdoor power supply?](#)

How to choose an outdoor power supply? The only purpose of this article is to save your time with the data I have compiled and to provide you with a comprehensive ...



## Contact Us

---

For inquiries, pricing, or partnerships:

<https://sccd-sk.eu>

Phone: +32 2 808 71 94

Email: [info@sccd-sk.eu](mailto:info@sccd-sk.eu)

Scan QR code for WhatsApp.

