



# What communication green base station does Castries use





## Overview

---

Fully meet the requirements of rapid 5G deployment, smooth evolution, efficient energy saving, and intelligent O&M. Including: 5G power, hybrid power and iEnergy network energy management solution. 5G power: 5G power one-cabinet site and All-Pad site simplify base station .

Fully meet the requirements of rapid 5G deployment, smooth evolution, efficient energy saving, and intelligent O&M. Including: 5G power, hybrid power and iEnergy network energy management solution. 5G power: 5G power one-cabinet site and All-Pad site simplify base station .

Fully meet the requirements of rapid 5G deployment, smooth evolution, efficient energy saving, and intelligent O&M. Including: 5G power, hybrid power and iEnergy network energy management solution. 5G power: 5G power one-cabinet site and All-Pad site simplify base station infrastructure.

This study presents an overview of sustainable and green cellular base stations (BSs), which account for most of the energy consumed in cellular networks. We review the architecture of the BS and the power consumption model, and then summarize the trends in green cellular network research over the.

A base station represents an access point for a wireless device to communicate within its coverage area. It usually connects the device to other networks or devices through a dedicated high bandwidth wire of fiber optic connection. Base stations typically have a transceiver, capable of sending and.

Base stations and cell towers are critical components of cellular communication systems, serving as the infrastructure that supports seamless mobile connectivity. These structures facilitate the transmission and reception of signals between mobile devices and the wider network, enabling voice.

A base station is an integral component of wireless communication networks, serving as a central point that manages the transmission and reception of signals between cellular networks and mobile devices. It ensures that users can access voice and data services effectively. Now that we have a solid.

Base station (or base radio station, BS) is – according to the International



Telecommunication Union 's (ITU) Radio Regulations (RR) [1] – a " land station in the land mobile service." A base station is called node B in 3G, eNB in LTE (4G), and gNB in 5G. The term is used in the context of mobile. Are green cellular base stations sustainable?

This study presents an overview of sustainable and green cellular base stations (BSs), which account for most of the energy consumed in cellular networks. We review the architecture of the BS and the power consumption model, and then summarize the trends in green cellular network research over the past decade.

How do base stations work?

Base stations use antennas mounted on cell towers to send and receive radio signals to and from mobile devices within their coverage area. This communication enables users to make voice calls, send texts, and access data services, connecting them to the wider world. Network Management and Optimization.

What are base stations used for?

In addition to supporting traditional mobile communication, base stations also play a vital role in two-way radio systems such as citizens band (CB) radio and ham radio. These fixed base stations are commonly used by dispatchers to communicate directly with multiple mobile operators in the field.

What is a base station in a cellular network?

**Base Stations** A base station, often housed within a cell site, is the central point in a cellular network where signals are transmitted and received from mobile devices. It consists of electronic equipment, including transceivers, antennas, and signal processors, that manage the communication within a specific geographical area or "cell."



## What communication green base station does Castries use

---



### What is Communication? Verbal, Non-Verbal & Written

Communication is simply the act of transferring information from one place, person or group to another. Every communication involves (at least) one sender, a message and a recipient.

### **COMMUNICATION Definition & Meaning**

The meaning of COMMUNICATION is the act or process of using words, sounds, signs, or behavior to express or exchange information or to express thoughts, feelings, etc., to another ...



### **COMMUNICATION , English meaning**

COMMUNICATION definition: 1. the act of communicating with people: 2. a message, letter, or announcement: 3. the various.... Learn more.

### **Castries 5G solar container communication station hybrid ...**

The 5G communication base station can be regarded as a power consumption system that integrates communication, power, and



temperature coupling, which is composed



### What Is Communication? How to Use It Effectively

Communication is sharing messages through words, signs, and more to create and exchange meaning. Feedback is a key part of communication, and can be given through ...

### **What is Communication?**

At its foundation, Communication focuses on how people use messages to generate meanings within and across various contexts, and is the discipline that studies all forms, modes, media, ...



### How does a TETRA base station work? - Wray Castle

TETRA, which stands for Terrestrial Trunked Radio, is a digital radio communication standard that is widely used by public safety organizations, transportation ...







## Green and Sustainable Cellular Base Stations: An Overview and ...

Cellular network operators attempt to shift toward green practices using two main approaches. The first approach uses energy-efficient hardware to reduce the energy ...



## Communication , Definition, Types, Examples, & Facts , Britannica

Communication, the exchange of meanings between individuals through a common system of symbols. This article treats the functions, types, and psychology of ...

## Effective Communication: Improving Your Interpersonal Skills

What is effective communication? Effective communication is about more than just exchanging information. It's about understanding the emotion and intentions behind the ...



## Base Stations

Backhaul Connection: The backhaul connection links the base station to the core network in the mobile communication system. It provides for the interchange of data between ...



## 8 Ways You Can Improve Your Communication Skills

Effective communication is a critical skill for all leaders. These 8 tips can help improve your communication habits in the workplace.



**1mwh** (500kw/1mw)

AIR COOLING  
ENERGY STORAGE CONTAINER

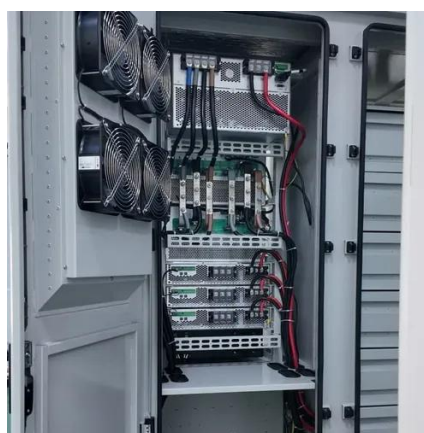


## **What Is A Base Station?**

Base stations play a central role in two-way radio systems, such as citizens band (CB) radio and ham radio. In these setups, the base station serves as a fixed point of ...

## **What is Communication?**

Communication is the process of exchanging information, ideas, thoughts and emotions--whether through spoken words, written texts, facial expressions or digital media. It's the foundation of ...



## **Basestation**

The base station is a transceiver and acts as an interface between a mobile station and network using microwave radio communication. It consists of three part elements: one or more ...



## Communication

Communication is commonly defined as the transmission of information. Its precise definition is disputed and there are disagreements about whether unintentional or failed transmissions are ...



### Types and Applications of Mobile Communication ...

A macro base station refers to a wireless signal transmitting base station of a communication operator. A macro base station has a ...



### Green and Sustainable Cellular Base Stations: An ...

This study presents an overview of sustainable and green cellular base stations (BSs), which account for most of the energy ...



## Base Stations and Cell Towers: The Pillars of Mobile Connectivity

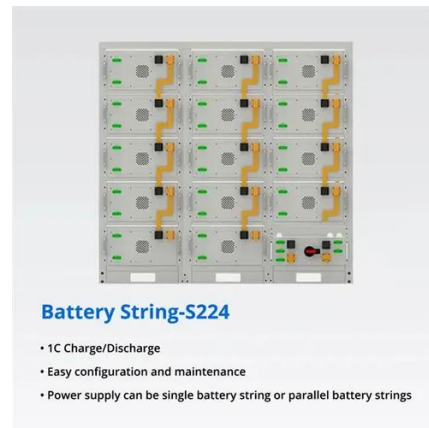
Base stations use antennas mounted on cell towers to send and receive radio signals to and from mobile devices within their coverage area. This communication enables ...





## What Is A Base Station?

Base stations play a central role in two-way radio systems, such as citizens band (CB) radio and ham radio. In these setups, the ...



## Base Stations

Backhaul Connection: The backhaul connection links the base station to the core network in the mobile communication system. It ...

## Base station

In professional two-way radio systems, a base station is used to maintain contact with a dispatch fleet of hand-held or mobile radios, and/or to ...



## Types and Applications of Mobile Communication Base Stations

A macro base station refers to a wireless signal transmitting base station of a communication operator. A macro base station has a large coverage distance, generally 35 ...



## Green and Sustainable Cellular Base Stations: An

This study presents an overview of sustainable and green cellular base stations (BSs), which account for most of the energy consumed in cellular networks.



### **Base station**

In professional two-way radio systems, a base station is used to maintain contact with a dispatch fleet of hand-held or mobile radios, and/or to activate one-way paging receivers. The base ...



## Contact Us

---

For inquiries, pricing, or partnerships:

<https://sccd-sk.eu>

Phone: +32 2 808 71 94

Email: [info@sccd-sk.eu](mailto:info@sccd-sk.eu)

Scan QR code for WhatsApp.

