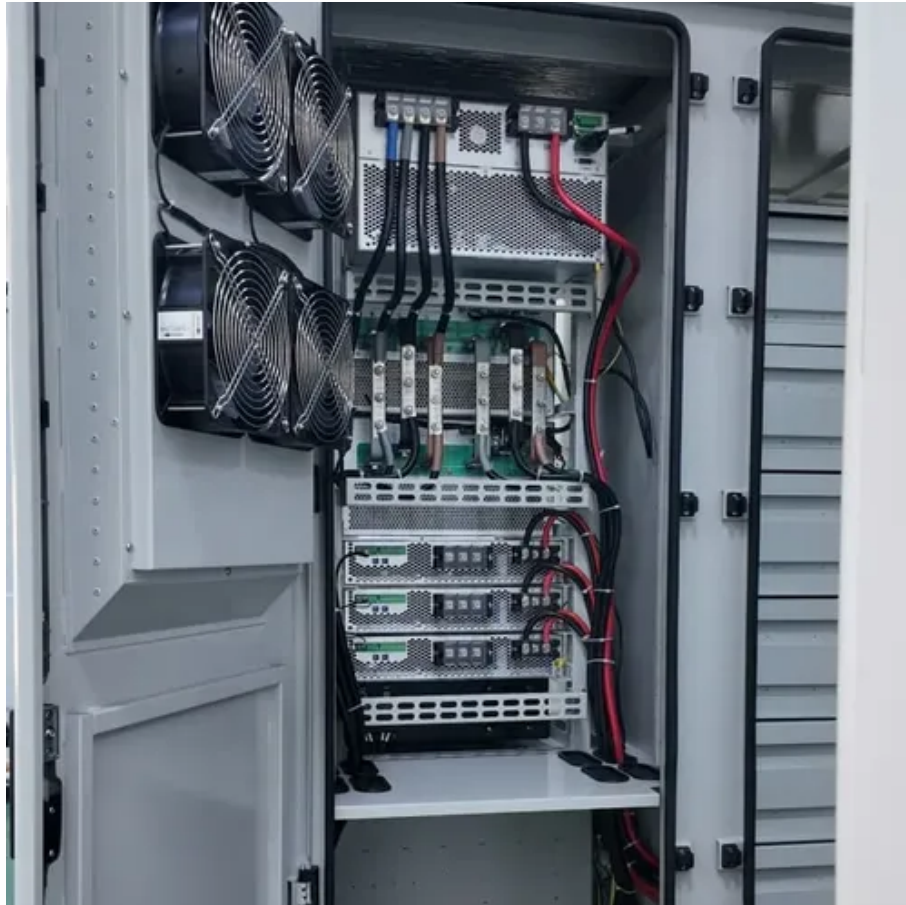




What does 100kw inverter mean





Overview

The most fundamental parameter is the power rating, which denotes the maximum amount of electricity the inverter can output. Measured in watts (W) or kilowatts (kW), this rating ensures that your inverter can handle the electrical load of your appliances and devices.

The most fundamental parameter is the power rating, which denotes the maximum amount of electricity the inverter can output. Measured in watts (W) or kilowatts (kW), this rating ensures that your inverter can handle the electrical load of your appliances and devices.

kW (kilowatts) measures real power—what actually powers your appliances. kVA (kilovolt-amps) measures apparent power—the total power the inverter handles, including both useful and reactive power. The gap between the two can affect system performance and sizing. Let's break this down so you know.

A solar inverter is an essential component of a solar energy system. It is responsible for converting the electrical direct current (DC) produced by solar panels into alternating current (AC), which is what is used in homes, businesses, and the grid. The primary function of a solar inverter is to.

The 100kW 3-Phase Industrial Hybrid Inverter is a powerful and scalable solution designed to meet the demands of large industrial energy systems. Supporting parallel operation of up to 4 inverters, it can be expanded to an impressive 400kW capacity, making it ideal for high-power applications. The.

A solar power inverter converts or inverts the direct current (DC) energy produced by a solar panel into Alternate Current (AC.) Most homes use AC rather than DC energy. DC energy is not safe to use in homes. What is a photovoltaic inverter?

Photovoltaic inverters play a crucial role in solar power.

As we know, the basic function of the inverter is to convert DC power to AC power because most of our electrical needs are for AC. The inverter is connected directly to either the power source (solar PV array or wind turbine) or the charge controller, depending on whether backup storage batteries.



Inverters can be sized differently to your overall panel array. While your panel array might be 100kW, the inverter could be either less or more than this size. Normally it is bad to have a much larger inverter than panels. It is usually good to have an inverter that is less than the array size. A.



What does 100kw inverter mean



Solaredge 100kw Inverter Datasheet

By efficiently converting solar energy into electricity, the Solaredge 100kw inverter ensures that your solar system operates at its full potential, ...

[Understanding Inverter Power Ratings: kW vs kVA Explained](#)

What do kW and kVA mean in inverter specifications? kW refers to the real or usable power output of an inverter. kVA represents the total power capacity it can carry, including power lost ...



Understanding Inverter Ratings and Specifications for Solar ...

Measured in watts (W) or kilowatts (kW), this rating ensures that your inverter can handle the electrical load of your appliances and devices. Another crucial rating is the voltage rating, ...



[100KW Solar Power System Price and Detail](#)

You can get everything you need to know about 100kw solar system. Including the 100kw solar panel power generate, how big is a 100kw solar



system.



100KW 3-Phase Industrial Hybrid Inverter

The 100kW 3-Phase Industrial Hybrid Inverter is a powerful and scalable solution designed to meet the demands of large industrial energy systems. Supporting parallel operation of up to 4 ...



100000 Watt DC Solar Inverters

These inverters can handle a range of power sources from 100,000 watts to 149,999 watts. Compare these 100kW commercial solar inverters from ABB, Fronius, SMA, SolarEdge, ...



Inverter Specifications and Data Sheet

The article provides an overview of inverter functions, key specifications, and common features found in inverter systems, along with an example of power calculations and inverter ...





[100KW 3-Phase Industrial Hybrid Inverter](#)

The 100kW 3-Phase Industrial Hybrid Inverter is a powerful and scalable solution designed to meet the demands of large industrial energy ...



[100KW Solar Power System Price and Detail](#)

You can get everything you need to know about 100kw solar system. Including the 100kw solar panel power generate, how big is a 100kw solar ...

[Everything You Need to Know About Inverter Sizing](#)

In this article, we'll go into the basics of what an inverter is, the types of inverters, inverter power outputs, and how the DC-to-AC size ratio is vital in making a solar system run ...



[100kW Solar System Information - Facts & Figures](#)

Inverters can be sized differently to your overall panel array. While your panel array might be 100kW, the inverter could be either less or more than this size.



Inverter Specifications and Data Sheet

Inverters can be sized differently to your overall panel array. While your panel array might be 100kW, the inverter could be either less or more than this size.



Solaredge 100kw Inverter Datasheet

By efficiently converting solar energy into electricity, the Solaredge 100kw inverter ensures that your solar system operates at its full potential, helping you to maximize your energy savings ...



Everything You Need to Know About Inverter ...

In this article, we'll go into the basics of what an inverter is, the types of inverters, inverter power outputs, and how the DC-to-AC size ...



The array-to-inverter ratio of a solar panel system is the DC rating of your solar array divided by the maximum AC output of your inverter. For example, if your array is 6 kW



Contact Us

For inquiries, pricing, or partnerships:

<https://sccd-sk.eu>

Phone: +32 2 808 71 94

Email: info@sccd-sk.eu

Scan QR code for WhatsApp.

