



What does BMS mean in solar container lithium battery





Overview

Every solar battery has a hidden hero inside it — the BMS, or Battery Management System. You won't see it on the outside, and you won't interact with it directly, but it quietly protects and optimises your battery every second of the day. Think of the BMS as the brain of your solar.

Every solar battery has a hidden hero inside it — the BMS, or Battery Management System. You won't see it on the outside, and you won't interact with it directly, but it quietly protects and optimises your battery every second of the day. Think of the BMS as the brain of your solar.

Every solar battery has a hidden hero inside it — the BMS, or Battery Management System. You won't see it on the outside, and you won't interact with it directly, but it quietly protects and optimises your battery every second of the day. Think of the BMS as the brain of your solar battery. Without.

What is a battery management system (BMS)?

When a battery is charged or discharged, a specific system that monitors and manages the internal operating characteristics of current, voltage, and temperature is commonly known as the battery management system or BMS. In order to enhance the safety and.

What Does BMS Mean in a Battery?

At its core, BMS stands for Battery Management System. It's an essential component for lithium-ion batteries, which are commonly used in electric vehicles (EVs), energy storage systems (ESS), and other devices that require rechargeable batteries. A BMS is.

The Battery Management System (BMS) is a crucial component in ensuring the safety, efficiency, and longevity of lithium batteries. It is responsible for managing the power flowing in and out of the battery, balancing the cells, and monitoring internal temperatures. In this article, we will explore.

A BMS for lithium-ion batteries acts as the "brain" of the battery pack, continuously monitoring, protecting, and optimizing performance to ensure safe operation and



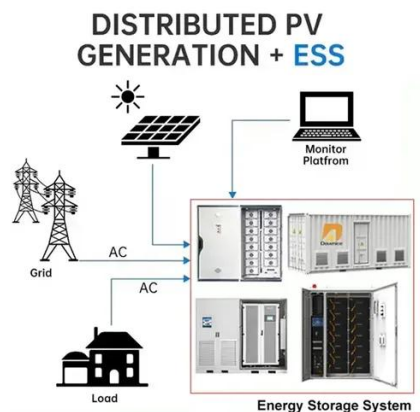
maximum lifespan. Understanding how BMS technology works is essential for anyone involved with lithium-ion applications. What is a.

This is where the Battery Management System (BMS) comes into play. In this article, we will explore what a BMS is, its importance, and how it contributes to the functionality and reliability of lithium batteries. What is a Battery Management System (BMS)?

A Battery Management System (BMS) is an.



What does BMS mean in solar container lithium battery



[What Does BMS Mean? A Comprehensive Guide , Renogy US](#)

When a battery is charged or discharged, a specific system that monitors and manages the internal operating characteristics of current, voltage, and temperature is commonly known as ...

How does the battery management system (BMS) work in a lithium battery

What is a Battery Management System (BMS)? A BMS is an electronic system that monitors and manages the performance of a lithium battery pack. It acts as a safeguard, protecting the ...



[Solar Battery BMS: What the Battery Management System ...](#)

Every solar battery has a hidden hero inside it -- the BMS, or Battery Management System. You won't see it on the outside, and you won't interact with it directly, but it quietly ...

[What Does BMS Mean in Lithium Batteries?](#)

At its core, BMS stands for Battery Management System. It's an essential component for lithium-ion batteries, which are commonly used in electric



vehicles (EVs), ...



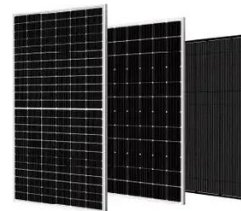
BMS for Lithium-Ion Batteries: The Essential Guide to Battery

A Battery Management System (BMS) is an electronic control system that manages rechargeable battery packs by monitoring their condition, controlling their operation, and ...



[BMS for Lithium-Ion Batteries: The Essential Guide ...](#)

A Battery Management System (BMS) is an electronic control system that manages rechargeable battery packs by monitoring their ...



[What Does BMS \(Battery Management System\) Mean?](#)

At its core, a Battery Management System is an electronic control unit that monitors and manages the performance of a rechargeable battery. Think of it like a vigilant gatekeeper: tracking cell ...





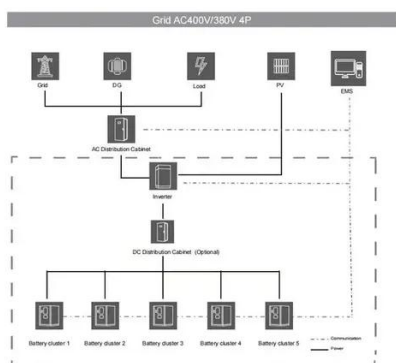
Understanding Battery Management Systems (BMS) in Lithium ...

Simply put, every lithium battery must include a Battery Management System. At its core, a BMS acts as a traffic light for the battery --controlling whether the battery can charge or discharge ...



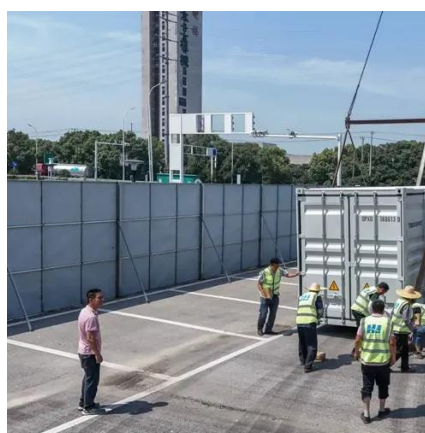
Understanding Battery Management Systems ...

Simply put, every lithium battery must include a Battery Management System. At its core, a BMS acts as a traffic light for the battery ...



Battery Management Systems (BMS) for Solar Storage

Battery Management Systems (BMS) are vital components for solar storage, streamlining the charge and discharge of the solar battery bank while monitoring important parameters like ...



BMS Insights: Key to Lithium Battery Safety

The Battery Management System (BMS) is a crucial component in ensuring the safety, efficiency, and longevity of lithium ...



Understanding BMS in Lithium Batteries:

...

What is a Battery Management System (BMS)? A Battery Management System (BMS) is an electronic system that manages a ...



What Does BMS Mean? A Comprehensive Guide

When a battery is charged or discharged, a specific system that monitors and manages the internal operating characteristics of current, voltage, and ...



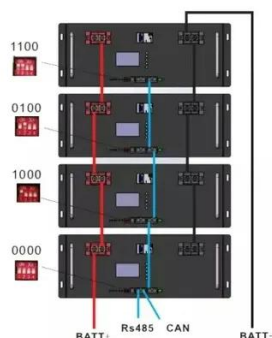
Battery Management Systems (BMS) for Solar ...

Battery Management Systems (BMS) are vital components for solar storage, streamlining the charge and discharge of the solar battery bank while ...



What Does BMS (Battery Management System) ...

At its core, a Battery Management System is an electronic control unit that monitors and manages the performance of a rechargeable battery. Think ...





Understanding BMS in Lithium Batteries: Importance and ...

What is a Battery Management System (BMS)? A Battery Management System (BMS) is an electronic system that manages a rechargeable battery by monitoring its ...



How does the battery management system (BMS) ...

What is a Battery Management System (BMS)? A BMS is an electronic system that monitors and manages the performance of a lithium battery ...



BMS Insights: Key to Lithium Battery Safety & Efficiency , NAZ Solar

The Battery Management System (BMS) is a crucial component in ensuring the safety, efficiency, and longevity of lithium batteries. It is responsible for managing the power ...





Contact Us

For inquiries, pricing, or partnerships:

<https://sccd-sk.eu>

Phone: +32 2 808 71 94

Email: info@sccd-sk.eu

Scan QR code for WhatsApp.

