



# What does Beiya solar container lithium battery BMS refer to





## Overview

---

A Battery Management System (BMS) is the brain and safety layer of any lithium battery pack. It monitors cells, protects against abuse, balances differences between cells, estimates state of charge/health, and communicates with the rest of the device or vehicle.

A Battery Management System (BMS) is the brain and safety layer of any lithium battery pack. It monitors cells, protects against abuse, balances differences between cells, estimates state of charge/health, and communicates with the rest of the device or vehicle.

What is a Lithium Ion BMS and How Does It Optimize Battery Performance?

A Lithium Ion BMS is a vital technology developed to monitor, control, and safeguard the cells in a lithium-ion battery. Everything from solar storage systems to electric cars is powered by these batteries, and extended battery.

A Battery Management System (BMS) is the brain and safety layer of any lithium battery pack. It monitors cells, protects against abuse, balances differences between cells, estimates state of charge/health, and communicates with the rest of the device or vehicle. A Battery Management System (BMS) is.

The BMS monitors the battery's condition, generates secondary data, and provides critical information reports. A BMS acts as an electronic system that controls and protects rechargeable batteries. It regulates the charging and discharging processes, ensuring they occur within safe limits and.

Simply put, every lithium battery must include a Battery Management System. At its core, a BMS acts as a traffic light for the battery —controlling whether the battery can charge or discharge based on a set of critical parameters. Think of the BMS as a computerized gatekeeper, making sure your.

What Does BMS Stand For?

BMS stands for Battery Management System. It is a sophisticated electronic system that manages rechargeable batteries, such as lithium-ion batteries, by diligently monitoring their state, calculating secondary data, reporting that data,



protecting the battery, controlling.

### What Does BMS Mean in a Battery?

At its core, BMS stands for Battery Management System. It's an essential component for lithium-ion batteries, which are commonly used in electric vehicles (EVs), energy storage systems (ESS), and other devices that require rechargeable batteries. A BMS is.



## What does Beiya solar container lithium battery BMS refer to

---



### Understanding Battery Management Systems (BMS) in Lithium Batteries

Simply put, every lithium battery must include a Battery Management System. At its core, a BMS acts as a traffic light for the battery --controlling whether the battery can charge or discharge ...

### [What Does BMS Mean in Lithium Batteries?](#)

At its core, BMS stands for Battery Management System. It's an essential component for lithium-ion batteries, which are commonly used in electric vehicles (EVs), ...



### BMS for Lithium-Ion Batteries: The Essential Guide to Battery

What is a BMS for Lithium-Ion Batteries? A Battery Management System (BMS) is an electronic control system that manages rechargeable battery packs by monitoring their ...



### [Understanding Battery Management Systems ...](#)

Simply put, every lithium battery must include a Battery Management System. At its core, a BMS acts as a traffic light for the battery ...



## BMS, PCS, and EMS in Battery Energy Storage ...

The BMS is the brain of the battery pack in a BESS, responsible for monitoring and protecting individual cells to prevent ...

## BMS, PCS, and EMS in Battery Energy Storage Systems ...

The BMS is the brain of the battery pack in a BESS, responsible for monitoring and protecting individual cells to prevent damage and extend lifespan. It measures critical ...



TAX FREE

**Product Model**  
HJ-ESS-215A(100KW/215KWh)  
HJ-ESS-115A(50KW 115KWh)

**Dimensions**  
1600\*1280\*2200mm  
1600\*1200\*2000mm

**Rated Battery Capacity**  
215KWH/115KWH

**Battery Cooling Method**  
Air Cooled/Liquid Cooled

ENERGY STORAGE SYSTEM

## **The Ultimate Guide to Lithium Battery BMS Technology for 2025**

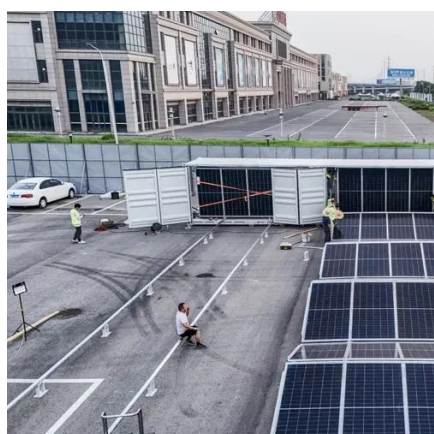
Lithium-ion batteries are used in everything from electric cars to solar systems, robotics, drones, medical equipment, industrial gear, and backup power plants. A Battery ...





## What is a Lithium Ion BMS and How Does It Optimize Battery ...

What is a Lithium-Ion BMS? A Battery Management System (BMS) works as the control center for controlling the battery pack. It monitors the state of charge (SoC), state of ...



### [BMS for Lithium-Ion Battery: Essential Guide](#)

Discover the crucial role of a BMS for lithium-ion batteries in ensuring safety, performance, and longevity. Learn about standard vs smart BMS options.

### [Understanding BMS and its Integration with Solar Inverters](#)

It controls and protects the battery, ensuring its best performance, longevity, and safety. The BMS monitors the battery's condition, generates secondary data, and provides ...



### [What does the BMS model of Beiya lithium battery refer to](#)

Modern lithium batteries are no longer simple storage units; they are intelligent energy systems designed to deliver safe, efficient, and lasting performance. At the heart of these systems lies ...



## [The Ultimate Guide to Lithium Battery BMS ...](#)

Lithium-ion batteries are used in everything from electric cars to solar systems, robotics, drones, medical equipment, industrial gear, ...



## [Lithium Battery Management Systems \(BMS\)](#)

Advanced monitoring of battery packs: Maximise safety, performance, and longevity for your lithium battery with our LiBAL Battery Management ...



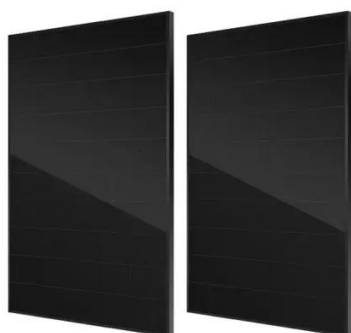
## [BMS for Lithium-Ion Battery: Essential Guide](#)

Discover the crucial role of a BMS for lithium-ion batteries in ensuring safety, performance, and longevity. Learn about standard vs ...



## [BMS for Lithium-Ion Batteries: The Essential Guide ...](#)

What is a BMS for Lithium-Ion Batteries? A Battery Management System (BMS) is an electronic control system that manages ...





## Lithium Battery Management Systems (BMS) , LiTHIUM BALANCE

Advanced monitoring of battery packs: Maximise safety, performance, and longevity for your lithium battery with our LiBAL Battery Management Systems (BMS).







## Contact Us

---

For inquiries, pricing, or partnerships:

<https://sccd-sk.eu>

Phone: +32 2 808 71 94

Email: [info@sccd-sk.eu](mailto:info@sccd-sk.eu)

Scan QR code for WhatsApp.

