



What does a voltage source inverter consist of





Overview

A VSI usually consists of a DC voltage source, voltage source, a transistor for switching purposes, and one large DC link capacitor. A DC voltage source can be a battery or a dynamo, or a solar cell, a transistor used maybe an IGBT, BJT, MOSFET, GTO.

A VSI usually consists of a DC voltage source, voltage source, a transistor for switching purposes, and one large DC link capacitor. A DC voltage source can be a battery or a dynamo, or a solar cell, a transistor used maybe an IGBT, BJT, MOSFET, GTO.

Definition: A voltage source inverter or VSI is a device that converts unidirectional voltage waveform into a bidirectional voltage waveform, in other words, it is a converter that converts its voltage from DC form to AC form. An ideal voltage source inverter keeps the voltage constant through-out.

An inverter is the main part of electronic circuit projects that convert DC power to AC through the following solid-state circuits. Similar voltage source inverters also perform DC to AC conversion. A voltage source inverter other name is voltage fed inverter. VSI is basically a combination of a DC.

A Voltage Source Inverter (VSI) is a type of power electronic device that converts direct current (DC) voltage to alternating current (AC) voltage. It's a crucial component in many applications, including renewable energy systems, electric vehicle drive systems, and uninterruptable power supplies.

What is a voltage source inverter (VSI)?

A voltage source inverter is an electronic device that converts a DC (direct current) input voltage into a variable AC (alternating current) output voltage. What are the main applications of voltage source inverters?

Voltage source inverters are commonly.

In the domain of power electronics and electrical engineering, the Voltage Source Inverter (VSI) stands as a pivotal technology for converting direct current (DC) into alternating current (AC) with controllable voltage and frequency. VSIs are integral



to a multitude of applications, including motor.

Identify the essential components of a voltage source inverter. Explain the principle behind dc to ac conversion. Identify the basic topology of single-phase and three-phase inverters and explain its principle of operation. Explain the gate drive circuit requirements of inverter switches. The word.



What does a voltage source inverter consist of



Voltage Source Inverter (VSI) : Definition, Features, Circuit

An inverter is the main part of electronic circuit projects that convert DC power to AC through the following solid-state circuits. Similar voltage source inverters also perform DC to ...

Power inverter

Power inverters are primarily used in electrical power applications where high currents and voltages are present; circuits that perform the same function ...

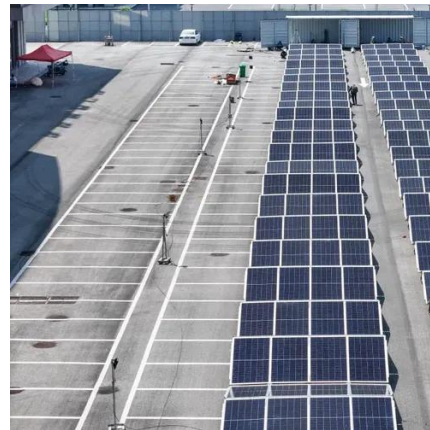


Voltage Source Inverter : Construction, Phases & Its Applications

A VSI usually consists of a DC voltage source, voltage source, a transistor for switching purposes, and one large DC link capacitor. A DC voltage source can be a battery or a dynamo, or a solar ...

Voltage Source Inverter

Definition: Voltage Source Inverter abbreviated as VSI is a type of inverter circuits that converts a dc input voltage into its ac equivalent at the output. It is also known as a voltage-fed inverter ...



INVERTERS

The word 'inverter' in the context of power-electronics denotes a class of power conversion (or power conditioning) circuits that operates from a dc voltage source or a dc current source and ...

Voltage Source Inverter

Definition: Voltage Source Inverter abbreviated as VSI is a type of inverter circuits that converts a dc input voltage into its ac equivalent at the output.

...



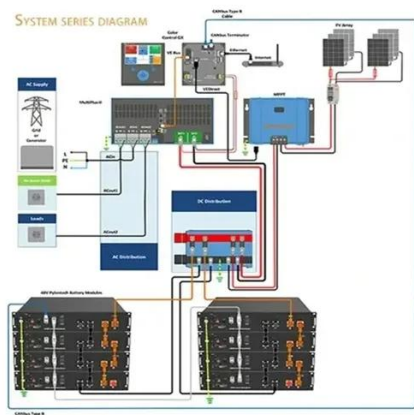
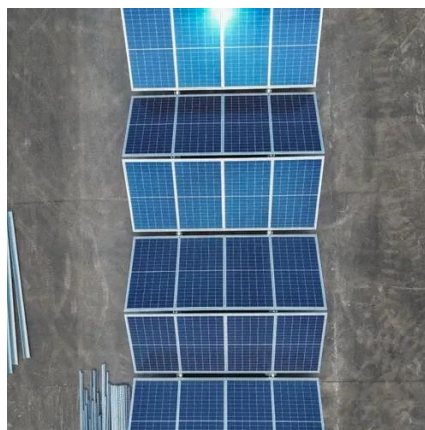
[Voltage Source Inverter \(VSI\) Operation , Electrical Academia](#)

A typical voltage source inverter consists of power semiconductor devices (such as insulated gate bipolar transistors or IGBTs), gate driver circuits, control circuits, and filtering elements.



Voltage Source Inverter: Their Role in Solar Power Conversion

A VSI consists of several core components, such as an inverter transistor, an inverter IGBT, a MOSFET inverter, PWM, and LC filters that produce a smooth current.



Voltage Source Inverter (VSI) : Know Definition, Working, Circuit

A Voltage Source Inverter (VSI) is a type of power electronic device that converts a fixed DC voltage into a variable AC voltage with controllable frequency and amplitude.

Voltage Source Inverter (VSI) : Know Definition, ...

A Voltage Source Inverter (VSI) is a type of power electronic device that converts a fixed DC voltage into a variable AC voltage with controllable ...



Voltage Source Inverter

Voltage source inverters are utilized to control the rate of electric engines by changes in the frequency and the voltage and comprise of input rectifier, DC connection, and output ...



Power inverter

Power inverters are primarily used in electrical power applications where high currents and voltages are present; circuits that perform the same function for electronic signals, which ...



Voltage Source Inverter (VSI) - Electricity -

...

A Voltage Source Inverter (VSI) is a type of power electronic device that converts direct current (DC) voltage to alternating current (AC) ...

Voltage Source Inverter (VSI) - Electricity - Magnetism

A Voltage Source Inverter (VSI) is a type of power electronic device that converts direct current (DC) voltage to alternating current (AC) voltage. It's a crucial component in many ...





Contact Us

For inquiries, pricing, or partnerships:

<https://sccd-sk.eu>

Phone: +32 2 808 71 94

Email: info@sccd-sk.eu

Scan QR code for WhatsApp.

