



What does inv mean on a portable power bank





Overview

It represents the amount of charge the power bank can store. A higher mAh rating indicates a larger capacity, meaning it can charge your devices more times before it needs to be recharged itself.

It represents the amount of charge the power bank can store. A higher mAh rating indicates a larger capacity, meaning it can charge your devices more times before it needs to be recharged itself.

Most power banks use LED dots or bars to show remaining battery life. Some high-end models use an LCD screen to give you a percentage. Tip: If all lights are blinking and never stop, it may mean the power bank is stuck or overheating. Unplug it and let it cool.

2. Mode & Function Indicators Beyond.

We'll translate those cryptic numbers on the packaging into practical information you can actually use, helping you make smarter decisions about the power banks you buy and use. What Makes USB-C Different?

Before power banks became essential accessories, the world of USB connectors was fragmented.

When you're shopping for a charger—whether it's a wall plug, wireless charging pad, or a portable power bank—you'll come across a lot of technical terms: voltage, amperage, wattage, mAh, USB PD. These are all part of the charger specifications, and they play a big role in how fast, safe, and

A portable charger is a battery you can carry. You charge it at home, then use it to charge other devices later. Most people use portable chargers for phones, but they also work with tablets, earbuds, and even laptops. You don't need to plug it into a wall when you use it. That's why it's great.

In theory, charging your phone, tablet, or laptop should be pretty simple: Plug a cable into the device, plug the cable into a charger, wait for the device to charge, and be on your way. But never underestimate the tech industry's ability to complicate. What should be a mindless interaction instead.

The capacity of a power bank is usually denoted in milliampere-hours (mAh). It



represents the amount of charge the power bank can store. A higher mAh rating indicates a larger capacity, meaning it can charge your devices more times before it needs to be recharged itself. The output is a power bank.



What does inv mean on a portable power bank



[Decoding Power Bank Specifications: Unraveling Their Meaning](#)

By the end of this article, you will have a clear understanding of the meanings behind the specifications on power banks, empowering you to make informed choices when ...

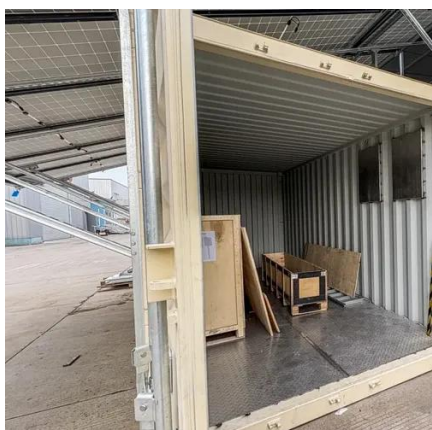
How to understand charger and power bank specifications , PCWorld

To get this level of charging speed, you'll need a Lightning to USB-C cable (for Apple) and USB-C to USB-C cable (for Android). Assuming you've got the requisite charging cables, you'll also ...



[What Is a Power Bank and How Does It Work? Explained Simply](#)

To prepare the power bank for use, connect it to a wall adapter, computer, or any compatible power source using the appropriate input cable. Most power banks feature ...



[What is a Power Bank? Power Banks Explained](#)

Internal circuitry: The main role of the internal circuits is to regulate the power flow between the wall charger, battery, and charged ...



Understanding Power Bank Specifications: Capacity, Output, and ...

Input is basically how fast a power bank charges. All of UGREEN's power banks charge quickly and can be charged at a fairly quick rate. For example, the UGREEN Foldable ...



How Does a Power Bank Work? A Beginner's ...

But how do portable phone chargers work? In this guide, we will explore how a power bank functions to provide us with an uninterrupted power supply ...



What Is a Power Bank and How Does It Work?

To prepare the power bank for use, connect it to a wall adapter, computer, or any compatible power source using the appropriate ...





[How to Master USB-C Power Bank Specs: A Plain ...](#)

Input power tells you how quickly the power bank itself recharges. Higher input ratings (particularly with USB-C) mean faster ...

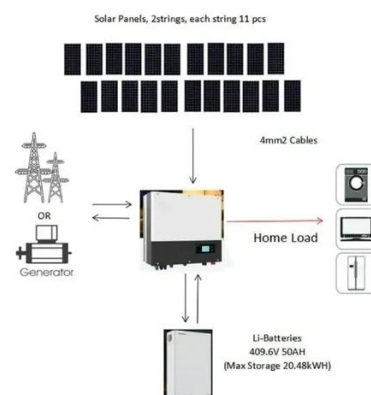


[How to understand charger and power bank specifications](#)

By the end of this article, you will have a clear understanding of the meanings behind the specifications on power banks, empowering ...

[How Does a Power Bank Work? A Beginner's Guide](#)

But how do portable phone chargers work? In this guide, we will explore how a power bank functions to provide us with an uninterrupted power supply when we need it the most.



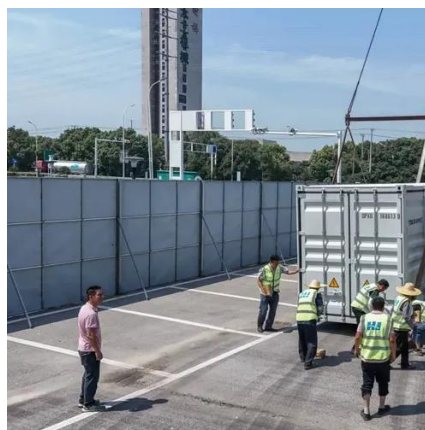
[Power Bank 101: Types, Specs, and Tips for Smart Charging](#)

Don't overlook input ports, which can affect how fast your power bank charges. A special mention goes to the INIU 10000 mAh portable charger, boasting USB-C In & Out ports ...



Portable Charger Basics: How to Read Lights, Ports, & Buttons

This is for when you want your power bank to stay powered on, even if the device you're using barely uses any energy. It's different from trickle mode because it keeps the ...



48V 100Ah

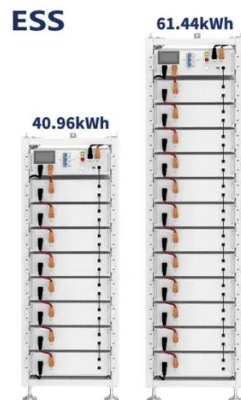
[How to Master USB-C Power Bank Specs: A Plain English Guide](#)

Input power tells you how quickly the power bank itself recharges. Higher input ratings (particularly with USB-C) mean faster recharging times for the power bank.

[Understanding Power Bank Specifications:](#)

...

Input is basically how fast a power bank charges. All of UGREEN's power banks charge quickly and can be charged at a fairly ...



Charger Specifications: Understand Power Bank Specs Like a Pro

Your power bank not only charges other devices--it also needs to recharge itself. Look for input specs like "5V/2A" or "USB-C PD 18W" to know how fast it can recharge.



What is a Power Bank? Power Banks Explained

Internal circuitry: The main role of the internal circuits is to regulate the power flow between the wall charger, battery, and charged devices. In this process, power needs to be ...





Contact Us

For inquiries, pricing, or partnerships:

<https://sccd-sk.eu>

Phone: +32 2 808 71 94

Email: info@sccd-sk.eu

Scan QR code for WhatsApp.

