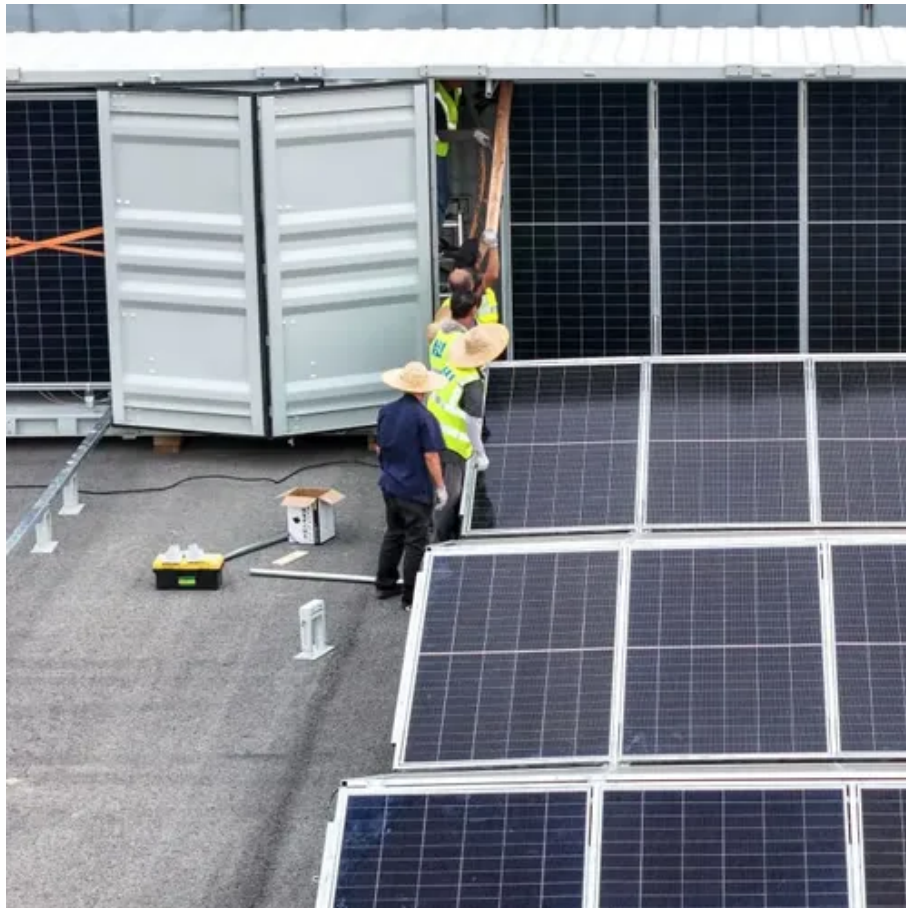




What does the communication network base station project include





Overview

In the area of wireless computer networking, a base station is a radio receiver/transmitter that serves as the hub of the local wireless network, and may also be the gateway between a wired network and the wireless network. It typically consists of a low-power transmitter and .

Key components include antennas, transceivers, duplexers, and processors. Add power amplifiers, control units, backhaul links, and power supplies. Together they maintain wireless communication.

Key components include antennas, transceivers, duplexers, and processors. Add power amplifiers, control units, backhaul links, and power supplies. Together they maintain wireless communication.

The idea of base stations is anchored in their function to provide coverage, capacity, and connectivity, hence allowing for extending the working capabilities of mobile phones and other radio gear. What is Base Station?

What is Base Station?

A base station represents an access point for a wireless.

A base station is a fixed communication infrastructure that connects mobile devices (such as smartphones, tablets, or IoT devices) to a network, enabling wireless communication. It acts as the intermediary between the mobile device and the broader telecommunications network, facilitating both data.

Base station (or base radio station, BS) is – according to the International Telecommunication Union 's (ITU) Radio Regulations (RR) [1] – a " land station in the land mobile service." A base station is called node B in 3G, eNB in LTE (4G), and gNB in 5G. The term is used in the context of mobile.

A base station connects your phone to the network. It acts as a hub between mobile devices and the core system. Base stations form the backbone of 4G LTE and 5G networks. They provide the coverage you need for calls and data. Base stations enable voice, data, and internet access. They transmit.

A base station is an integral component of wireless communication networks, serving as a central point that manages the transmission and reception of signals



between cellular networks and mobile devices. It ensures that users can access voice and data services effectively. Now that we have a solid.

A base station is a critical component in a telecommunications network. A fixed transceiver that acts as the central communication hub for one or more wireless mobile client devices. In the context of cellular networks, it facilitates wireless communication between mobile devices and the core.



What does the communication network base station project include



What Is a Base Station? Exploring the Core of 5G Networks and ...

This article explains the definition, structure, types, and principles of base stations, while highlighting the critical role of thermal interface materials in base station heat ...

Base Station's Role in Wireless Communication Networks

In these areas, deployable solutions like satellite-linked base stations or solar-powered units ensure connectivity where traditional infrastructure is unavailable. This ...



What Does a Base Station Do and Why Is It Essential for ...

A base station is a fixed point of communication between mobile devices and the wider telecom network. It transmits and receives radio signals, enabling your phone to access ...

Base Stations

Base stations form a key part of modern wireless communication networks because they offer some crucial advantages, such as wide coverage, continuous communications and ...



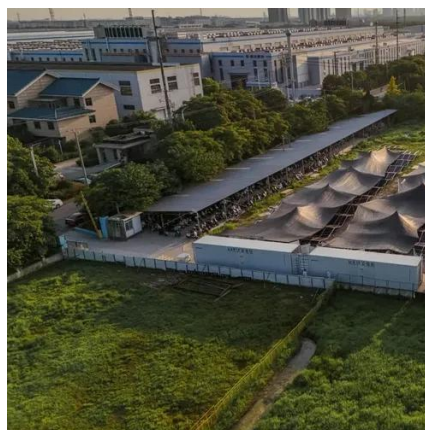
Understanding Base Stations: The Backbone of Wireless ...

In cellular networks, a base station typically consists of antennas, a transmitter/receiver system, and a base station controller (BSC). The base station is ...



What Is A Base Station?

A base station is an integral component of wireless communication networks, serving as a central point that manages the transmission and reception of signals between ...



What is a Base Station in Telecommunications?

Discover the role and functionality of a base station in telecommunications networks. Learn how these critical components manage communication ...





What Is a Base Station? Exploring the Core of 5G ...

This article explains the definition, structure, types, and principles of base stations, while highlighting the critical role of thermal ...



Base station

In the area of wireless computer networking, a base station is a radio receiver/transmitter that serves as the hub of the local wireless network, and may also be the gateway between a wired ...



Understanding Base Stations: The Backbone of Wireless Communication

In cellular networks, a base station typically consists of antennas, a transmitter/receiver system, and a base station controller (BSC). The base station is ...



Base Station's Role in Wireless Communication Networks

In these areas, deployable solutions like satellite-linked base stations or solar-powered units ensure connectivity where traditional infrastructure is unavailable. This helps bridge the digital ...





What are Base Station in Telecommunications?

Base stations contain several key parts. The antenna sends and receives radio energy. The transceiver handles signal modulation. The baseband processor converts signals to digital ...



Base station

OverviewComputer networkingLand surveyingWireless communicationsSee also

In the area of wireless computer networking, a base station is a radio receiver/transmitter that serves as the hub of the local wireless network, and may also be the gateway between a wired network and the wireless network. It typically consists of a low-power transmitter and wireless router.



What Is the Role of a Base Station in Wireless Communication?

Base stations are critical components in wireless communication networks, serving as the intermediary between mobile devices and the core network. They play a vital role in ...



What is a Base Station in Telecommunications?

Discover the role and functionality of a base station in telecommunications networks. Learn how these critical components manage communication between mobile devices and the network, ...





Contact Us

For inquiries, pricing, or partnerships:

<https://sccd-sk.eu>

Phone: +32 2 808 71 94

Email: info@sccd-sk.eu

Scan QR code for WhatsApp.

