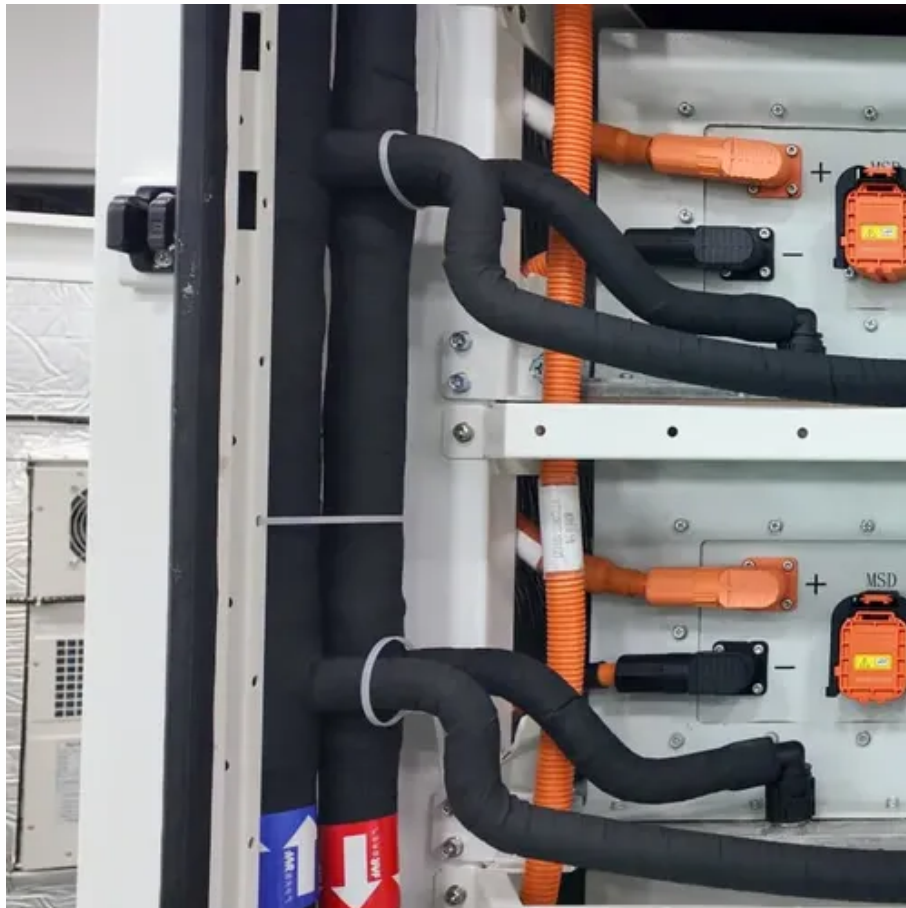




What does the t on a power tool solar container lithium battery mean





Overview

The third terminal is for a thermistor that measures the temperature of the battery (so "T" for temperature sensor). This is important to prevent over-charging and to regulate the charge depending on ambient temperature.

The third terminal is for a thermistor that measures the temperature of the battery (so "T" for temperature sensor). This is important to prevent over-charging and to regulate the charge depending on ambient temperature.

What does the lithium-ion battery symbol mean in engineering design and safety?

The symbol identifies a battery or device that uses lithium-ion chemistry. It helps engineers, technicians, and manufacturers ensure proper usage, safety, and compliance with global standards. This symbol is critical.

These letters indicate the type of material used in the battery: LFP: Stands for lithium iron phosphate (LiFePO_4), indicating that the battery is a lithium iron phosphate battery. ICR: Refers to lithium cobalt oxide (LiCoO_2) chemistry, used in some lithium-ion batteries. LP: Typically refers to.

Battery labels encode chemistry (e.g., "CR" for lithium), size (like "2032" indicating 20mm diameter x 3.2mm height), voltage, capacity, and safety certifications. These alphanumeric codes help users identify compatibility, performance, and handling requirements for devices ranging from watches to.

The battery pack likely has a BMS built in, the T is either that charging input since the input and output would share a ground, or it is sensor like a temperature probe. yep confirmed. It's a Thermistor connected between the Negative and T terminals, its for the on-board pcb chip to monitor the.

The following introduces the name of the lithium-ion battery model and the meaning of the letters and numbers on the battery, so that everyone can better understand the battery model specifications. Name of the square battery model: 6 numbers indicate the thickness, width and height of the battery.

Most information on the casings of cordless power tool batteries and chargers are described using symbols and pictograms instead of words. The symbol meanings



will usually be given in the instruction manual that comes with the tool. Here is a selection of the most common symbols to appear. Please.



What does the t on a power tool solar container lithium battery mean



[Lithium Battery Labels 101: A Beginner's Guide](#)

When it comes to shipping lithium batteries, it's important to understand the specific labeling requirements to ensure the safe and compliant transport of these potentially ...

[Lithium Battery Labels 101: A Beginner's Guide](#)

When it comes to shipping lithium batteries, it's important to understand the specific labeling requirements to ensure the safe and ...



[Lithium Battery Symbol Guide for Professionals](#)

The symbol identifies a battery or device that uses lithium-ion chemistry. It helps engineers, technicians, and manufacturers ensure proper usage, safety, and compliance with ...



[Meaning of Codes on Lithium Batteries](#)

The numbers on a lithium battery provide important information about the battery's dimensions or capacity. For Cylindrical Batteries (e.g., 18650): ...



What do the symbols on cordless power tool batteries and chargers mean

Most information on the casings of cordless power tool batteries and chargers are described using symbols and pictograms instead of words. The symbol meanings will usually be given in the ...



Cordless Power Tools: Understanding Battery ...

All batteries, including those used in electric power tools, have a negative terminal and a positive terminal. The difference between these terminals ...



What does the "T" symbol mean in between + and

The battery pack likely has a BMS built in, the T is either that charging ...





Cordless drill charger what does letter T mean next to + and

Does it look for resistance or does it look to see if a battery is there. The third terminal is for a thermistor that measures the temperature of the battery (so "T" for ...



Li-ion battery model name and the meaning of the letters and ...

Name of the square battery model: 6 numbers indicate the thickness, width and height of the battery, respectively, in millimeters.



Cordless Power Tools: Understanding Battery Voltages

All batteries, including those used in electric power tools, have a negative terminal and a positive terminal. The difference between these terminals is measured in voltage. A higher voltage ...



Lithium Battery Symbol Guide for Professionals

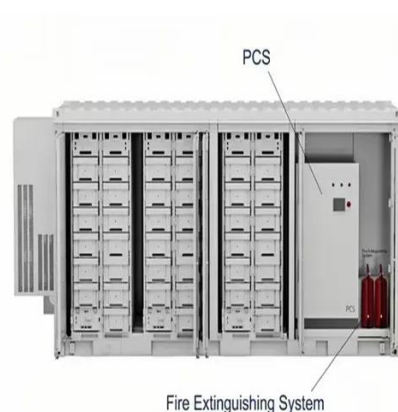
The symbol identifies a battery or device that uses lithium-ion chemistry. It helps engineers, technicians, and manufacturers ensure ...





Navigating the Power Maze: My Ultimate Power Tool Battery Guide

While sniffing around for the best power tool battery scoop, I've stumbled on a real gem in lithium-ion batteries. Let me tell ya, these batteries have been a revelation for power ...



What do the symbols on cordless power tool ...

Most information on the casings of cordless power tool batteries and chargers are described using symbols and pictograms instead of words. ...



What does the "T" symbol mean in between + and

The battery pack likely has a BMS built in, the T is either that charging input since the input and output would share a ground, or it is sensor like a temperature probe.



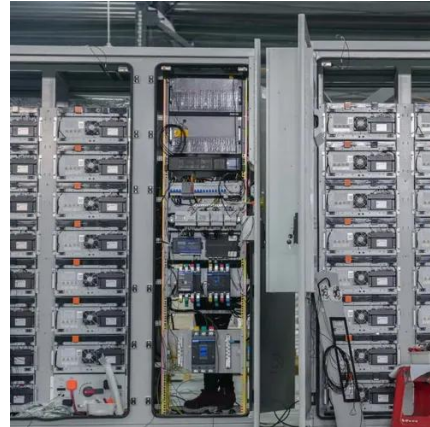
Meaning of Codes on Lithium Batteries

The numbers on a lithium battery provide important information about the battery's dimensions or capacity. For Cylindrical Batteries (e.g., 18650): The numbers refer to the battery's physical size.



Understanding Battery Labeling: What the Letters on a Battery Mean

"Battery labeling is a critical safety interface between chemistry and end-users. A single misread character - confusing LiFePO4 with LiCoO2, for instance - can lead to thermal ...





Contact Us

For inquiries, pricing, or partnerships:

<https://sccd-sk.eu>

Phone: +32 2 808 71 94

Email: info@sccd-sk.eu

Scan QR code for WhatsApp.

