



What electrical equipment does an energy storage station need





Overview

A battery energy storage system (BESS), battery storage power station, battery energy grid storage (BEGS) or battery grid storage is a type of technology that uses a group of in the grid to store . Battery storage is the fastest responding on , and it is used to stabilise those grids, as battery storage can transition fr.

Energy storage stations require a variety of specialized equipment to function efficiently and effectively: 1. Batteries, 2. Inverters, 3. Safety systems, 4. Control systems. The most critical component is the battery, which serves as the primary storage medium for energy.

Energy storage stations require a variety of specialized equipment to function efficiently and effectively: 1. Batteries, 2. Inverters, 3. Safety systems, 4. Control systems. The most critical component is the battery, which serves as the primary storage medium for energy.

What equipment does an energy storage station need?

1. Energy storage stations require a variety of specialized equipment to function efficiently and effectively: 1. Batteries, 2. Inverters, 3. Safety systems, 4. Control systems. The most critical component is the battery, which serves as the.

Imagine your smartphone's power bank – now scale it up to power entire cities. That's essentially what modern energy storage equipment does, but with far more complexity and real-world impact. As renewable energy adoption surges (global market projected to reach \$1.3 trillion by 2030 [3]), the.

A battery energy storage system (BESS), battery storage power station, battery energy grid storage (BEGS) or battery grid storage is a type of energy storage technology that uses a group of batteries in the grid to store electrical energy. Battery storage is the fastest responding dispatchable.

Battery storage power stations store electrical energy in various types of batteries such as lithium-ion, lead-acid, and flow cell batteries. These facilities require efficient operation and management functions, including data collection capabilities, system control, and management capabilities.

Electrical Energy Storage (EES) systems store electricity and convert it back to electrical energy when needed. 1 Batteries are one of the most common forms of

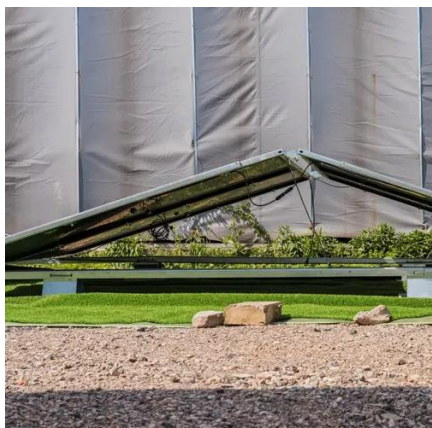


electrical energy storage. The first battery, Volta's cell, was developed in 1800.² The U.S. pioneered large-scale energy storage with the.

An energy storage system (ESS) for electricity generation uses electricity (or some other energy source, such as solar-thermal energy) to charge an energy storage system or device, which is discharged to supply (generate) electricity when needed at desired levels and quality. ESSs provide a variety.



What electrical equipment does an energy storage station need



[Battery storage power station - a comprehensive guide](#)

Battery storage power stations store electrical energy in various types of batteries such as lithium-ion, lead-acid, and flow cell batteries. These facilities require efficient operation and ...

U.S. Grid Energy Storage Factsheet

Electrical Energy Storage (EES) systems store electricity and convert it back to electrical energy when needed. 1 Batteries are one of the most common forms of electrical energy storage.



What equipment does an energy storage power station involve?

The fundamental component of any energy storage power station is undoubtedly the batteries. These devices are designed to store energy for later utilization, making them ...



[What equipment does an energy storage station need?](#)

Energy storage stations require a variety of specialized equipment to function efficiently and effectively: 1. Batteries, 2. Inverters, 3. Safety

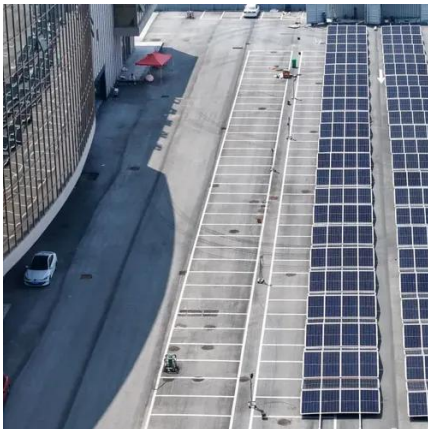


systems, 4. Control systems. The ...



Battery energy storage system

A battery energy storage system (BESS), battery storage power station, battery energy grid storage (BEGS) or battery grid storage is a type of energy storage technology that uses a ...



Battery energy storage system

OverviewConstructionSafetyOperating characteristicsMarket development and deployment

A battery energy storage system (BESS), battery storage power station, battery energy grid storage (BEGS) or battery grid storage is a type of energy storage technology that uses a group of batteries in the grid to store electrical energy. Battery storage is the fastest responding dispatchable source of power on electric grids, and it is used to stabilise those grids, as battery storage can transition fr...



Electrical Energy Storage

Utility-scale storage capabilities are still mainly reliant on pumped hydro but batteries are increasingly used as their energy density (energy storage capability) has increased and costs ...



WHAT EQUIPMENT DOES A POWER STATION NEED

Container Energy Storage System (CESS) is a modular and scalable energy storage solution that utilizes containerized lithium-ion batteries to store and supply electricity.



Energy storage systems: what are they and how they work

There are different types of energy storage systems, which differ in their technical characteristics, performance, costs and applications. The most widespread types include: batteries, which are ...

Energy storage for electricity generation

They must use electricity supplied by separate electricity generators or from an electric power grid to charge the storage system, which makes ESSs secondary generation sources.





Essential Equipment for Energy Storage Systems: A 2025 Guide

Why Energy Storage Equipment Matters More Than Ever Imagine your smartphone's power bank - now scale it up to power entire cities. That's essentially what ...





Contact Us

For inquiries, pricing, or partnerships:

<https://sccd-sk.eu>

Phone: +32 2 808 71 94

Email: info@sccd-sk.eu

Scan QR code for WhatsApp.

