



What equipment are there in the base station communication room



48V 100Ah





Overview

A base transceiver station (BTS) or a baseband unit (BBU) is a piece of equipment that facilitates between (UE) and a network. UEs are devices like (handsets), phones, computers with connectivity, or antennas mounted on buildings or telecommunication towers. The network can be that of any of the wireless communication technologies like , , , , or other

The guide then describes basic equipment needed in a base station: a transceiver (transmitter and receiver), a control device, microphone and speaker, a transmission line, and an antenna.

The guide then describes basic equipment needed in a base station: a transceiver (transmitter and receiver), a control device, microphone and speaker, a transmission line, and an antenna.

This guide presents background information to help law enforcement agencies analyze their base station equipment needs and select superior equipment to provide reliable communication between the control center and field units. The first section discusses the frequency bands available to law.

A base transceiver station (BTS) or a baseband unit[1] (BBU) is a piece of equipment that facilitates wireless communication between user equipment (UE) and a network. UEs are devices like mobile phones (handsets), WLL phones, computers with wireless Internet connectivity, or antennas mounted on.

A typical communication base station combines a cabinet and a pole. The cabinet houses critical components like main base station equipment, transmission equipment, power supply systems, and battery banks. Meanwhile, the pole serves as a mounting point for antennas, Remote Radio Units (RRUs), and.

A base transceiver station (BTS) or a baseband unit (BBU) is a piece of equipment that facilitates between (UE) and a network. UEs are devices like (handsets), phones, computers with connectivity, or antennas mounted on buildings or telecommunication towers. The network can be that of any of the.

The block diagram of a base station typically includes the following key components: Baseband Processor: The baseband processor too deals with different communication protocols and interfaces with mobile network infrastructure. Duplexer: The duplexer enables the employment of a single antenna for.



The Air Force Installation and Mission Support Center sustains the base communications infrastructure that supports Department of the Air Force mission requirements. AFIMSC partners with installation communications squadrons and information technology flights to sustain the IT infrastructure that.



What equipment are there in the base station communication room

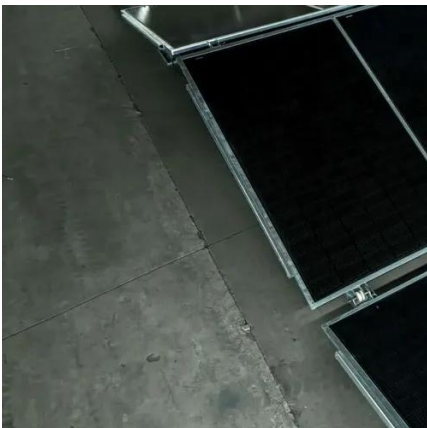


Base Stations

The present-day tele-space is incomplete without the base stations as these constitute an important part of the modern-day scheme of wireless communications. They are ...

Base transceiver station

It may also have equipment for encrypting and decrypting communications, spectrum filtering tools (band pass filters) and so on. Antennas may also be considered as components of BTS ...



Complete Guide to 5G Base Station Construction , Key Steps, Equipment

At the heart of mobile communication networks lies the main base station equipment. Central to this setup are three critical components-- BBU (Baseband Unit), RRU ...

Base transceiver station

A base transceiver station (BTS) or a baseband unit (BBU) is a piece of equipment that facilitates wireless communication between user equipment (UE) and a network. UEs are devices like mobile



phones (handsets), WLL phones, computers with wireless Internet connectivity, or antennas mounted on buildings or telecommunication towers. The network can be that of any of the wireless communication technologies like GSM, CDMA, wireless local loop, Wi-Fi, WiMAX or other



How a Base Station Radio Strengthens Campus and Emergency Communication

A base station radio remains a critical part of reliable, real-time communication. But the most effective systems go a step further - integrating base stations with digital radios, LTE ...

Base station subsystem

Two GSM base station antennas disguised as trees in Dublin, Ireland. The base transceiver station, or BTS, contains the equipment for transmitting and receiving radio signals ...



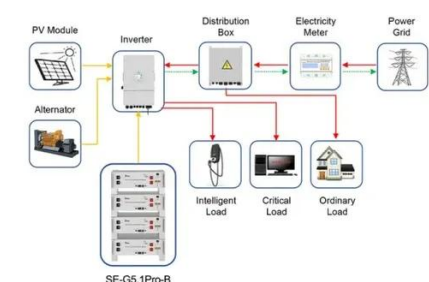
Guide to Base Station Communications Equipment , Office of ...

The guide then describes basic equipment needed in a base station: a transceiver (transmitter and receiver), a control device, microphone and speaker, a transmission line, and an antenna.



Base station box communication equipment

The guide then describes basic equipment needed in a base station: a transceiver (transmitter and receiver), a control device, microphone and speaker, a transmission line, and an antenna.



Application scenarios of energy storage battery products

Radio Base Stations for Secure Communication

Base stations are equipped with transmitters and receivers, which help to send and receive radio signals to and from mobile devices. Base stations transmit and receive radio signals over a ...

PowerPoint Presentation

AFIMSC identifies options for bases to consider as part of an integrated Emergency Notification Management System, to include assistance with fully engineered solutions. AFIMSC stays in ...



The Ultimate Guide To P25 Base Station - A brilliant blog

A p25 base station is a key component of a P25 communication system, providing the infrastructure necessary to establish and maintain communication between P25 radios and ...



[Complete Guide to 5G Base Station Construction](#)

At the heart of mobile communication networks lies the main base station equipment. Central to this setup are three critical ...





Contact Us

For inquiries, pricing, or partnerships:

<https://sccd-sk.eu>

Phone: +32 2 808 71 94

Email: info@sccd-sk.eu

Scan QR code for WhatsApp.

