



# What equipment in the base station can use the power supply





## Overview

---

Power supplies can be employed in each of the three systems that compose wireless base stations. These three systems are known as the environmental monitoring system, the data communication system, and the power supply system.

Power supplies can be employed in each of the three systems that compose wireless base stations. These three systems are known as the environmental monitoring system, the data communication system, and the power supply system.

Power supplies can be employed in each of the three systems that compose wireless base stations. These three systems are known as the environmental monitoring system, the data communication system, and the power supply system. Each of these systems is in turn divided into smaller sections and.

As a result, a variety of state-of-the-art power supplies are required to power 5G base station components. Modern FPGAs and processors are built using advanced nanometer processes because they often perform calculations at fast speeds using low voltages ( $<0.9$  V) at high current from compact.

The cabinet houses critical components like main base station equipment, transmission equipment, power supply systems, and battery banks. Meanwhile, the pole serves as a mounting point for antennas, Remote Radio Units (RRUs), and other equipment, often resembling a “candied hawthorn stick” in its.

As a result, a variety of state-of-the-art power supplies are required to power 5G base station components. Modern FPGAs and processors are built using advanced nanometer processes because they often perform calculations at fast speeds using low voltages ( $<0.9$  V) at high current from compact.

A base station represents an access point for a wireless device to communicate within its coverage area. It usually connects the device to other networks or devices through a dedicated high bandwidth wire or fiber optic connection. Base stations typically have a transceiver, capable of sending and.

These Telecom base stations are highly dependent on a stable power supply for



efficient operation. However, power outages, voltage fluctuations, and the quest for more environmentally friendly energy solutions have increased the need for reliable backup power. Batteries play a vital role in.



## What equipment in the base station can use the power supply

---



### Base Stations

The present-day tele-space is incomplete without the base stations as these constitute an important part of the modern-day scheme of wireless communications. They are ...

### What is the purpose of batteries at telecom base stations?

Telecom batteries refer to batteries that are used as a backup power source for wireless communications base stations. In the event that an external power source cannot be used, the ...



### Study on Power Feeding System for 5G Network

Requirements to ICT equipment Power Supply Unit (PSU) and supporting facilities. -42V. It means that if the voltage drop is more than 6V, the ICT equipment will be protected.

### Selecting the Right Supplies for Powering 5G Base Stations

These tools simplify the task of selecting the right power management solutions for these devices and, thereby, provide an optimal power solution



for 5G base stations components.



### [CB Radio Base Station Equipment Recommendations and Advice](#)

The basic components for a Base Station CB System include a CB radio, power supply (if you are using a mobile CB radio instead of a base station CB radio), coax, and an antenna. The article ...



### [Complete Guide to 5G Base Station Construction , Key Steps, Equipment](#)

Explore how 5G base stations are built--from site planning and cabinet installation to power systems and cooling solutions. Learn the essential components, technologies, and ...



### [Selecting the Right Supplies for Powering 5G Base Stations ...](#)

A single RoHS compliant BGA package integrates a switching controller, power switches, an inductor, and all the supporting components. In some cases, to maximize power supply ...

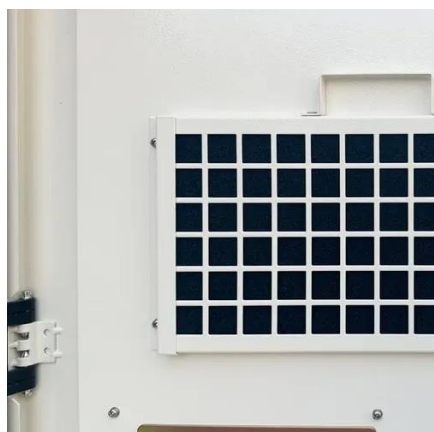






## [What is the purpose of batteries at telecom base ...](#)

Telecom batteries refer to batteries that are used as a backup power source for wireless communications base stations. In the event that an external ...



## [Complete Guide to 5G Base Station Construction](#)

Explore how 5G base stations are built--from site planning and cabinet installation to power systems and cooling solutions. Learn the ...

## **5G Base Station Power Supply System: NextG Power's Cutting ...**

At NextG Power, we're tackling this challenge with our Reliable & Scalable Power for Next-Generation 5G Networks solution, featuring IP65 waterproof power modules (2000W or ...



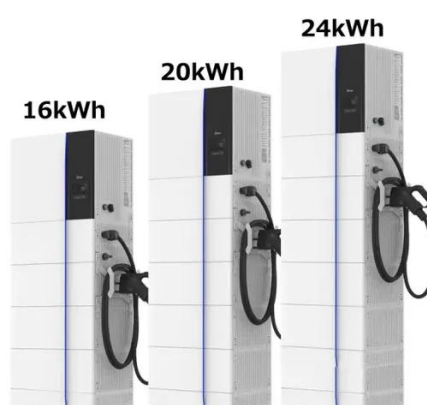
## [5G macro base station power supply design strategy and ...](#)

For macro base stations, Cheng Wentao of Infineon gave some suggestions on the optimization of primary and secondary power supplies. "In terms of primary power supply, we ...



## Base Stations

The present-day tele-space is incomplete without the base stations as these constitute an important part of the modern-day scheme ...



## Power Supply Solutions for Wireless Base Stations Applications

Power supplies can be employed in each of the three systems that compose wireless base stations. These three systems are known as the environmental monitoring system, the data ...

### Selecting the Right Supplies for Powering 5G Base Stations

These tools simplify the task of selecting the right power management solutions for these devices and, thereby, provide an optimal power solution for 5G base stations components.





## Contact Us

---

For inquiries, pricing, or partnerships:

<https://sccd-sk.eu>

Phone: +32 2 808 71 94

Email: [info@sccd-sk.eu](mailto:info@sccd-sk.eu)

Scan QR code for WhatsApp.

