



What is in the solar combiner box





Overview

A solar combiner box is an electrical enclosure that combines the output of numerous strings of PV modules for connection to the inverter. It houses input overcurrent protection fuse assemblies for multiple strings, with the number of strings ranging anywhere between three and 52.

A solar combiner box is an electrical enclosure that combines the output of numerous strings of PV modules for connection to the inverter. It houses input overcurrent protection fuse assemblies for multiple strings, with the number of strings ranging anywhere between three and 52.

A solar array, whether on a residential rooftop or a large commercial field, generates direct current (DC) electricity that must be efficiently managed before it can be converted and used. As the number of solar modules increases, the complexity of channeling that power to a single point for.

In the solar power sector, the combiner box plays a crucial role. It not only consolidates the current output from multiple solar panels but also provides protection and fault monitoring functions, ensuring the safe and efficient operation of the solar system. This article will delve into the.

A solar combiner box connects multiple solar panel strings into a single output for the inverter. It helps organize wiring, improve safety, and boost efficiency. By reducing messy cables, it makes installation easier and lowers the risk of electrical issues. It also protects against power surges.

Bottom Line Up Front: A solar combiner box consolidates multiple solar panel strings into a single output before sending power to the inverter. It simplifies wiring, enhances safety with overcurrent protection, and reduces installation costs—but it's typically only needed for systems with four or.

A solar combiner box is a crucial component in solar power systems. It combines the outputs from multiple strings of solar panels into a single circuit, simplifying wiring, reducing installation complexity, and improving overall efficiency. Serving as a central hub for managing DC electricity, the.

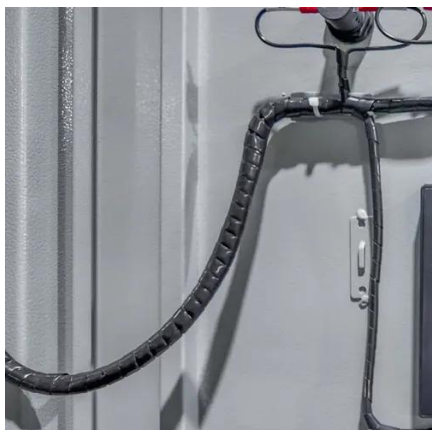
Modern solar power stations—from residential rooftops to 1500V industrial



arrays—depend heavily on high-quality electrical enclosures, advanced protection components, and intelligent data systems to maintain long-term reliability. This guide explains how combiner boxes work, how they have evolved.



What is in the solar combiner box



[Everything You Need to Know About PV Combiner Box](#)

Learn everything about PV Combiner Boxes--how they work, key components, installation tips, and FAQs to optimize your solar power system safely and efficiently.

[Solar Combiner Box Essentials: Beginner's Guide](#)

Unlock solar combiner box basics: key components, functions, and maintenance. Ideal for efficient solar setups. Click for expert guidance!



Solar combiner box: definition, core functions and working principle

The combiner box in a solar photovoltaic (PV) system aggregates the electrical output from multiple solar panels into a single conduit, which is then fed into the system's inverter.

[What Is a Combiner Box as Used in PV System](#)

A combiner box, also known as a PV combiner box or solar combiner box, is an electrical enclosure that consolidates multiple strings of solar panels



into a single output. ...



What Is a Solar Combiner Box and How Does It Work?

The solar combiner box serves as the central collection point, acting as a structured hub for the high-voltage DC power generated by the photovoltaic modules. Core Function Solar panels ...



How does a Solar Combiner Box work

What is a Solar Combiner Box? A solar combiner box is a crucial component in solar power systems. It combines the outputs from multiple strings of solar panels into a single ...

12.8V 200Ah



Solar combiner box: definition, core functions and ...

The combiner box in a solar photovoltaic (PV) system aggregates the electrical output from multiple solar panels into a single ...





Understanding PV Combiner Boxes: Design, ...

What Is a PV Combiner Box? A combiner box is a key DC distribution device used between PV strings and the inverter. Each string ...

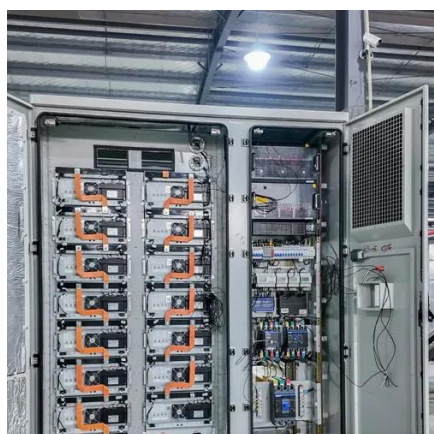


Solar Combiner Box: What Is It

A solar combiner box connects multiple solar panel strings into a single output for the inverter. It helps organize wiring, improve safety, and boost efficiency.

What Is a Combiner Box in a Solar Panel System? Complete Guide

A combiner box merges multiple PV strings into one safe DC output, adds over-current fuses or breakers, includes surge (SPD) protection, and can add monitoring.



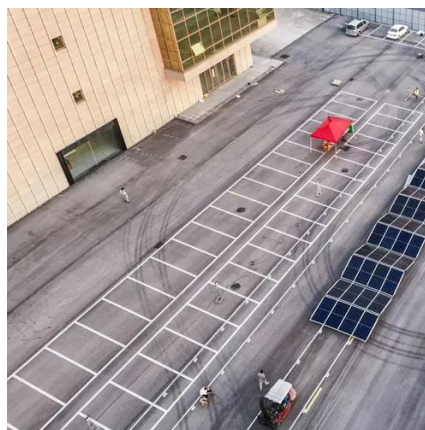
Solar Combiner Box: What Is It

Learn what a solar combiner box does, when you need one, and how it simplifies wiring while enhancing safety in solar installations. ...



[Understanding PV Combiner Boxes: Design, Function, ...](#)

What Is a PV Combiner Box? A combiner box is a key DC distribution device used between PV strings and the inverter. Each string consists of solar modules wired in series, and ...



[What Does a Solar Combiner Box Do? Complete PV Guide 2025](#)

Learn what a solar combiner box does, when you need one, and how it simplifies wiring while enhancing safety in solar installations. Complete guide with expert insights.



Contact Us

For inquiries, pricing, or partnerships:

<https://sccd-sk.eu>

Phone: +32 2 808 71 94

Email: info@sccd-sk.eu

Scan QR code for WhatsApp.

