



What is the communication 5g base station standard





Overview

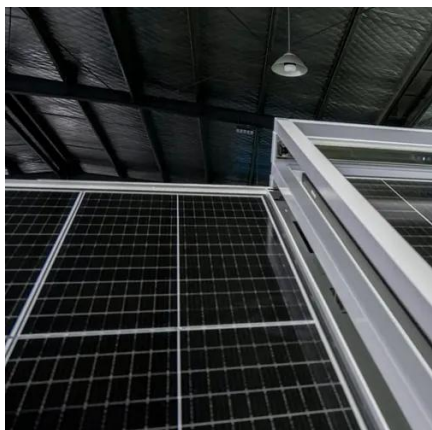
5G is the fifth generation of cellular network technology and the successor to 4G. First deployed in 2019, its technical standards are developed by the 3rd Generation Partnership Project (3GPP) in cooperation with the ITU's IMT-2020 program. 5G networks divide coverage areas into smaller zones called cells, enabling devices to connect to local base stations via radio. Each station connects to a central hub. History In 2008, NASA and the conducted nanosatellite.

Small cells are low-power radio nodes that extend network capacity in dense or indoor areas. They operate over short distances, typically a few dozen to a few hundred metres, and are used to maintain coverage for mmWave.

The 5G core (5GC) is a service-oriented, software-defined system that separates control and user planes and supports flexible deployment. It replaces the 4G with modular, software-based.



What is the communication 5g base station standard



5G NR Base Station types

It covers Wide area base stations, Medium range base stations, and local area base stations. The Associated deployment scenarios for each class are exactly the same for BS with and without ...

[5G NR Base Station Classes: Type 1-C, Type 1-H, ...](#)

Learn about the different classes of 5G NR base stations (BS), including Type 1-C, Type 1-H, Type 1-O, and Type 2-O, and their specifications.



base station in 5g

A 5G base station, also known as a gNodeB (gNB), is a critical component of a 5G network infrastructure. It plays a central role in ...

What Is a Base Station? Exploring the Core of 5G Networks and ...

This article explains the definition, structure, types, and principles of base stations, while highlighting the critical role of thermal interface



materials in base station heat ...



base station in 5g

A 5G base station, also known as a gNodeB (gNB), is a critical component of a 5G network infrastructure. It plays a central role in enabling wireless communication between user ...



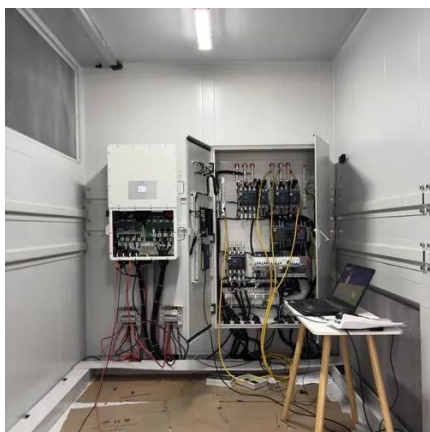
[What Is a Base Station? Exploring the Core of 5G ...](#)

This article explains the definition, structure, types, and principles of base stations, while highlighting the critical role of thermal ...



[Complete Guide to 5G Base Station Construction](#)

Explore how 5G base stations are built--from site planning and cabinet installation to power systems and cooling solutions. Learn the ...





Unveiling the 5G Base Station: The Backbone of ...

What is a 5G Base Station? A. Defining the 5G Base Station. A 5G base station, also known as a 5G Node B (gNodeB) or a 5G Next Generation ...



What is a 5G Base Station?

5G base stations operate by using multiple input and multiple output (MIMO) antennas to send and receive more data simultaneously compared to previous generations of ...

5G equipment, safety standards and performance

Like in previous mobile networks, 5G devices communicate with base stations by transmitting and receiving radio waves, or radio frequency (RF) electromagnetic fields (EMF). 5G networks ...



Learn What a 5G Base Station Is and Why It's Important

A 5G base station is the heart of the fifth-generation mobile network, enabling far higher speeds and lower latency, as well as new levels of connectivity. Referred to as ...





5G NR Base Station Classes: Type 1-C, Type 1-H, Type 1-O, ...

Learn about the different classes of 5G NR base stations (BS), including Type 1-C, Type 1-H, Type 1-O, and Type 2-O, and their specifications.



5G

5G is the fifth generation of cellular network technology and the successor to 4G. First deployed in 2019, [1] its technical standards are developed by the 3rd Generation Partnership Project ...

What is a 5G Base Station?

5G base stations operate by using multiple input and multiple output (MIMO) antennas to send and receive more data simultaneously ...



[Unveiling the 5G Base Station: The Backbone of Next-Gen ...](#)

What is a 5G Base Station? A. Defining the 5G Base Station. A 5G base station, also known as a 5G Node B (gNodeB) or a 5G Next Generation Node B (gNB), is a critical component of the ...



Complete Guide to 5G Base Station Construction , Key Steps, ...

Explore how 5G base stations are built--from site planning and cabinet installation to power systems and cooling solutions. Learn the essential components, technologies, and ...





Contact Us

For inquiries, pricing, or partnerships:

<https://sccd-sk.eu>

Phone: +32 2 808 71 94

Email: info@sccd-sk.eu

Scan QR code for WhatsApp.

