



What is the energy storage device fw





Overview

Flywheel energy storage is a form of mechanical energy storage that works by spinning a rotor (flywheel) at very high speeds. This stored energy can be quickly converted back to electricity when needed, providing a reliable and efficient way to manage power supply and demand.

Flywheel energy storage is a form of mechanical energy storage that works by spinning a rotor (flywheel) at very high speeds. This stored energy can be quickly converted back to electricity when needed, providing a reliable and efficient way to manage power supply and demand.

Flywheel energy storage (FES) works by spinning a rotor (flywheel) and maintaining the energy in the system as rotational energy. When energy is extracted from the system, the flywheel's rotational speed is reduced as a consequence of the principle of conservation of energy; adding energy to the.

Flywheel Energy Storage Systems (FESS) rely on a mechanical working principle: An electric motor is used to spin a rotor of high inertia up to 20,000-50,000 rpm. Electrical energy is thus converted to kinetic energy for storage. For discharging, the motor acts as a generator, braking the rotor to.

This article will explain the flywheel energy storage system (FESS). You can learn about its working principle, advantages and disadvantages And the comparison with BESS in the article to help you choose. What Is a Flywheel Energy Storage System?

A flywheel energy storage system is a mechanical.

While batteries have been the traditional method, flywheel energy storage systems (FESS) are emerging as an innovative and potentially superior alternative, particularly in applications like time-shifting solar power. What is a Flywheel Energy Storage System (FESS)?

A flywheel energy storage system.

Flywheel energy storage systems have several benefits that make them an attractive option for energy storage. Some of the key advantages include: Flywheel



energy storage systems are known for their high efficiency and reliability. They can store energy kinetically in the form of a rotating.

At its core, a flywheel storage system is a mechanical device designed to store rotational energy. The fundamental component of this system is the flywheel itself, a heavy rotating disc that spins at high speeds. Energy is stored in the form of kinetic energy, and this energy can be quickly. What is a flywheel energy storage system (fess)?

A flywheel energy storage system stores energy mechanically rather than chemically. It operates by converting electrical energy into rotational kinetic energy, where a heavy rotor (the flywheel) spins at high speed within a vacuum chamber.

How does a flywheel energy storage system work?

Flywheel Energy Storage Systems (FESS) rely on a mechanical working principle: An electric motor is used to spin a rotor of high inertia up to 20,000-50,000 rpm. Electrical energy is thus converted to kinetic energy for storage. For discharging, the motor acts as a generator, braking the rotor to produce electricity.

How does energy storage work?

During energy storage, electrical energy is transformed by the power converter to drive the motor, which in turn drives the flywheel to accelerate and store energy in the form of kinetic energy in the high-speed rotating flywheel . The motor then maintains a constant speed.

What is the difference between a flywheel and a battery storage system?

Flywheel Systems are more suited for applications that require rapid energy bursts, such as power grid stabilization, frequency regulation, and backup power for critical infrastructure. Battery Storage is typically a better choice for long-term energy storage, such as for renewable energy systems (solar or wind) or home energy storage.



What is the energy storage device fw



Flywheel energy storage

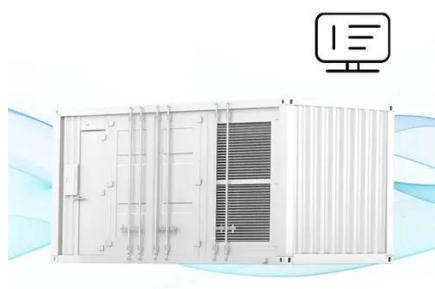
Flywheel energy storage (FES) works by spinning a rotor (flywheel) and maintaining the energy in the system as rotational energy.

Technology: Flywheel Energy Storage

Flywheel Energy Storage Systems (FESS) rely on a mechanical working principle: An electric motor is used to spin a rotor of high inertia up to 20,000-50,000 rpm.



FLEXIBLE SETTING OF MULTIPLE WORKING MODES



Flywheel Energy Storage

Flywheel energy storage is a form of mechanical energy storage that works by spinning a rotor (flywheel) at very high speeds. This stored energy can be quickly converted back to electricity ...

Flywheel Energy Storage (FES) Systems

Energy storage: As the flywheel spins, it stores kinetic energy. The energy can be stored as long as the flywheel continues to spin. The ...



Flywheel Energy Storage: Alternative to Battery Storage

A flywheel energy storage system stores energy mechanically rather than chemically. It operates by converting electrical energy into rotational kinetic energy, where a ...



What is a Flywheel Storage System? High-Speed Energy Backup ...

At its core, a flywheel storage system is a mechanical device designed to store rotational energy. The fundamental component of this system is the flywheel itself, a heavy ...



- ✓ 50KW/100KWH
- ✓ HIGHER POWER OUTPUT IN OFF-GRID MODE
- ✓ CONVENIENT OPERATION & MAINTENANCE
- ✓ PRE-WIRED

What is energy? explained

Scientists define energy as the ability to do work. Modern civilization is possible because people have learned how to change energy from one form to another and then use it to do work.





Flywheel Energy Storage System: What Is It and How Does It ...

A flywheel energy storage system is a mechanical device used to store energy through rotational motion. When excess electricity is available, it is used to accelerate a flywheel to a very high ...



Flywheel Energy Storage , Umbrex

Flywheel Energy Storage (FES) is a type of mechanical energy storage system that uses rotational kinetic energy to store and generate electricity. This technology involves spinning a ...

[The Physics of Energy: What It Is and Why It Matters](#)

This article dives deep into the physics of energy, unpacking what energy truly is, exploring its different forms, uncovering the laws governing it, and revealing why it matters ...



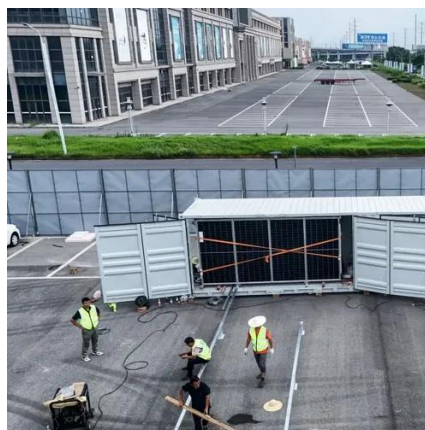
Energy

Energy (from Ancient Greek $\epsilon\eta\epsilon\rho\gamma\epsilon\iota\alpha$ ($\epsilon\eta\epsilon\rho\gamma\epsilon\iota\alpha$) 'activity') is the quantitative property that is transferred to a body or to a physical system, recognizable in the performance of work and in ...



Flywheel Energy Storage

Flywheel energy storage is a form of mechanical energy storage that works by spinning a rotor (flywheel) at very high speeds. ...

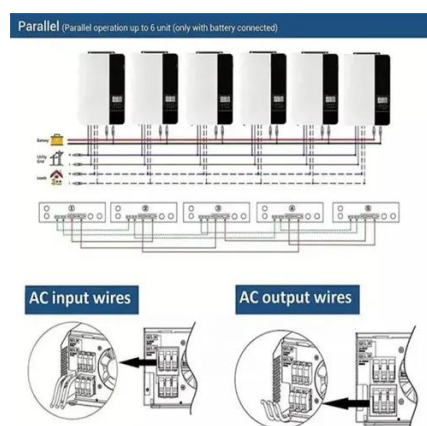


[Energy , Definition, Types, Examples, & Facts , Britannica](#)

Energy, in physics, the capacity for doing work. It may exist in potential, kinetic, thermal, electrical, chemical, nuclear, or various other forms. There are, moreover, heat and work--i.e., energy in ...

Flywheel Energy Storage , Umbrex

Flywheel Energy Storage (FES) is a type of mechanical energy storage system that uses rotational kinetic energy to store and generate ...



Flywheel Energy Storage Explained

Flywheel energy storage systems are known for their high efficiency and reliability. They can store energy kinetically in the form of a rotating flywheel, which can be converted ...



What Is Energy? Energy Explained

Energy refers to the ability or capacity to do work or cause changes in a physical system. Most people think of energy as the "fuel" or "power" that allows things to happen or work to be done.

...



Flywheel Energy Storage System

Flywheel energy storage system (FESS), is a mechanical energy storage that stores energy in the form of kinetic energy in rotating mass. It has been used for many years to store energy and to

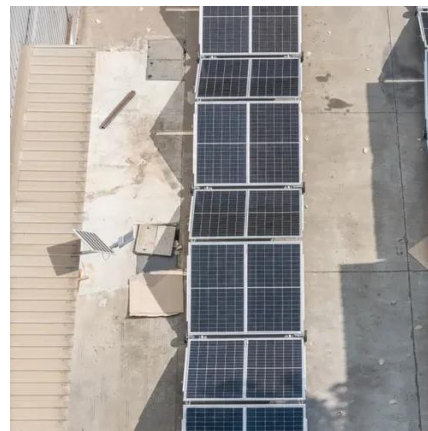
...



[What is energy: definition, types, and key examples](#)

At its core, energy is the ability to produce change or perform work. In a more technical sense, energy can be defined as the quantitative property that must be transferred to an object to

...



[Flywheel Energy Storage System: What Is It and ...](#)

A flywheel energy storage system is a mechanical device used to store energy through rotational motion. When excess electricity is available, it is

...





What Is Energy? Energy Definition and Examples (Science)

Energy is the ability to do work. Examples of energy include electrical, nuclear, and chemical energy. The concept of energy is key to science and engineering. Here is the ...



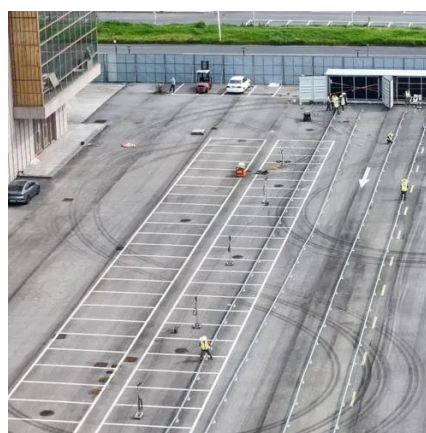
Flywheel Energy Storage (FES) Systems

Energy storage: As the flywheel spins, it stores kinetic energy. The energy can be stored as long as the flywheel continues to spin. The flywheel is often located in a vacuum ...



Energy Basics

Energy cannot be created or destroyed, but we can theoretically run out of certain forms of energy like fossil fuels. Fossil fuels are a stock resource (we have a set amount on earth) that can ...



12.8V 200Ah



10 Types of Energy With Examples

Energy is the ability to do work, but it comes in various forms. Here are 10 types of energy and everyday examples of them.



FPL , Homepage

Florida Power & Light Company serves more customers and sells more power than any other utility, providing clean, affordable, reliable electricity to more than 5.9 million accounts, or more ...





Contact Us

For inquiries, pricing, or partnerships:

<https://sccd-sk.eu>

Phone: +32 2 808 71 94

Email: info@sccd-sk.eu

Scan QR code for WhatsApp.

