



What is the normal operation of solar on-site energy like





Overview

Use solar power to save you money and reduce your carbon footprint. The most common on-site renewable energy systems are solar-powered. Solar setups convert light energy from the sun into electrical current. They can be installed in sun-facing areas such as rooftops, external walls.

Use solar power to save you money and reduce your carbon footprint. The most common on-site renewable energy systems are solar-powered. Solar setups convert light energy from the sun into electrical current. They can be installed in sun-facing areas such as rooftops, external walls.

Installing on-site renewable energy systems is a common strategy facility owners can use to save money, reduce their greenhouse gas emissions, and add resiliency to their facilities by generating their own electricity. Many facilities have recognized the advantages of on-site renewable energy.

After solar energy arrays are installed, they must undergo operations and maintenance (O&M) to function properly and meet energy production targets over the lifecycle of the solar system and extend its life. Conducting regular O&M ensures optimal performance of photovoltaic (PV) systems while.

Onsite solar is an asset installed in the same location where the energy generated will be consumed. For each kilowatt-hour (kWh) the onsite solar asset produces, a kWh of consumption will be offset for a buyer of renewable energy, or offtaker. These systems are often described as “behind the.

Use solar power to save you money and reduce your carbon footprint. The most common on-site renewable energy systems are solar-powered. Solar setups convert light energy from the sun into electrical current. They can be installed in sun-facing areas such as rooftops, external walls or parking lots.

Solar energy is derived from the sun’s radiation and is one of the most abundant and sustainable energy sources on Earth. It is harnessed using technologies like solar panels and concentrated solar power systems to produce electricity or heat. Unlike traditional energy sources, solar energy is.

Onsite solar is generating and utilizing clean energy directly with the ability to



either A. store and use it onsite to power an operation, or B. use the power and sell the overage to the local utility. An onsite solar array can reduce your energy costs, eliminate energy cost volatility and enhance.



What is the normal operation of solar on-site energy like

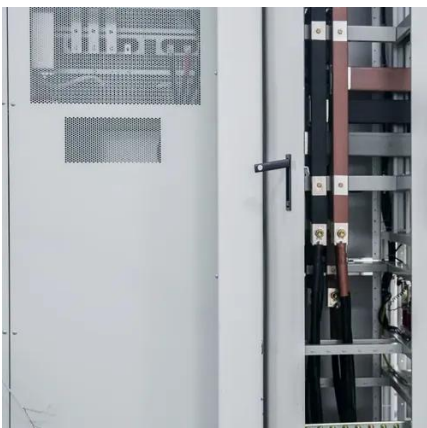
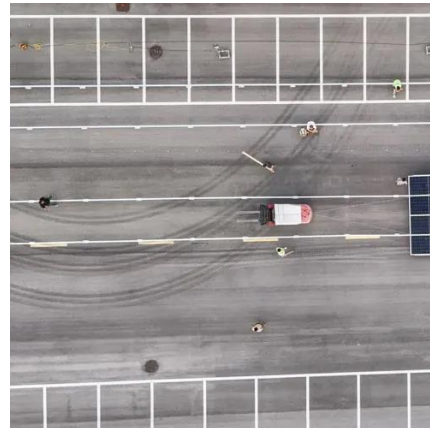


[Solar Operations and Maintenance Resources for ...](#)

After solar energy arrays are installed, they must undergo operations and maintenance (O& M) to function properly and meet energy production ...

[What Is On-Site Power Generation, and How Does ...](#)

Solar Panel System (usually on a rooftop): Those shiny panels on your roof don't just look nice; they convert sunlight into electricity, ...



[Optimizing Solar Energy Operations: A ...](#)

This article explores the fundamental aspects of new energy photovoltaic operations, aiming to provide readers with insights into the ...

Produce renewable energy on-site

Use solar power to save you money and reduce your carbon footprint. The most common on-site renewable energy systems are solar-powered. ...



[How Onsite Solar Can Transform Your Energy Strategy , Trio](#)

What is onsite solar? Onsite solar is an asset installed in the same location where the energy generated will be consumed. For each kilowatt-hour (kWh) the onsite solar asset produces, a ...

[What Is An Onsite Solar System? , Knobelsdorff ...](#)

An onsite solar array can reduce your energy costs, eliminate energy cost volatility and enhance your own sustainability efforts by providing a ...



Onsite Solar , ENGIE Impact

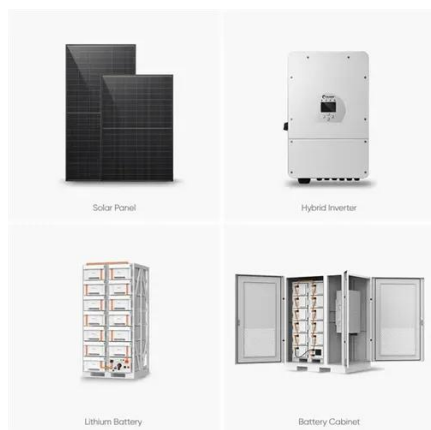
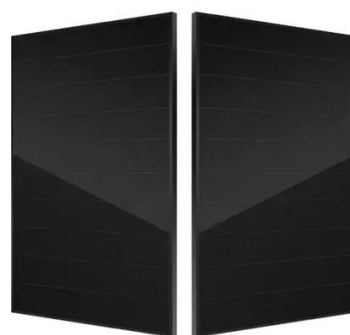
It involves the deployment of solar panels or photovoltaic (PV) modules on rooftops, parking lots, or other available spaces on the property. On-site solar installations can vary in size, from ...





What Is On-Site Power Generation, and How Does It Work?

Solar Panel System (usually on a rooftop): Those shiny panels on your roof don't just look nice; they convert sunlight into electricity, allowing you to tap into renewable energy ...



Maximizing the Benefits of On-Site Renewable Energy ...

This resource provides an overview of common renewable generation, storage, and load management technologies that can be integrated into facilities. It also shows how generation ...

Solar System Success: Operation and ...

Discover the operation and maintenance of solar electric systems to boost efficiency and longevity. Unlock expert insights now!



What Is An Onsite Solar System? , Knobelsdorff Enterprises

An onsite solar array can reduce your energy costs, eliminate energy cost volatility and enhance your own sustainability efforts by providing a tangible energy asset of your own.



[How Onsite Solar Can Transform Your Energy ...](#)

What is onsite solar? Onsite solar is an asset installed in the same location where the energy generated will be consumed. For each kilowatt-hour ...



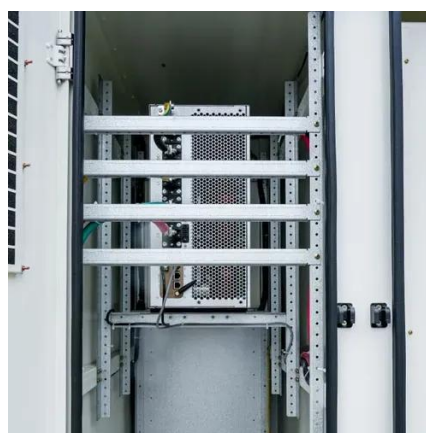
[Solar System Success: Operation and Maintenance Guide](#)

Discover the operation and maintenance of solar electric systems to boost efficiency and longevity. Unlock expert insights now!



[Optimizing Solar Energy Operations: A Comprehensive Guide to](#)

This article explores the fundamental aspects of new energy photovoltaic operations, aiming to provide readers with insights into the operational modes, technical ...



[A Beginner's Guide to Understanding Solar Power Plant Operations](#)

Solar power plants often connect to the local electricity grid, enabling them to supply excess power and support broader energy needs. These plants use PV panels to ...





Produce renewable energy on-site

Use solar power to save you money and reduce your carbon footprint. The most common on-site renewable energy systems are solar-powered. Solar setups convert light energy from the sun ...



Solar Operations and Maintenance Resources for Plant Operators

After solar energy arrays are installed, they must undergo operations and maintenance (O& M) to function properly and meet energy production targets over the lifecycle of the solar system and ...

Onsite Solar , ENGIE Impact

It involves the deployment of solar panels or photovoltaic (PV) modules on rooftops, parking lots, or other available spaces on the property. On-site ...





Contact Us

For inquiries, pricing, or partnerships:

<https://sccd-sk.eu>

Phone: +32 2 808 71 94

Email: info@sccd-sk.eu

Scan QR code for WhatsApp.

