



What is the normal voltage of Ecuador solar container lithium battery pack





Overview

How do I choose a lithium-ion battery pack?

When selecting a lithium-ion battery pack, understanding its voltage characteristics is crucial for ensuring optimal performance and longevity. Three key voltage terms define a battery's operation: Nominal Voltage, Charged Voltage, and Cut-Off Voltage.

What voltage does a lithium ion battery use?

This voltage range is crucial for the battery's performance and longevity. The U.S. Department of Energy states that lithium-ion batteries commonly operate at a nominal voltage of 3.7 volts per cell, an industry standard based on their chemical composition.

What is the SOC voltage chart for lithium batteries?

The SoC voltage chart for lithium batteries shows the voltage values with respect to SoC percentage. A Li-ion cell when fully charged at 100%SoC can have nearly 4.2V. As it starts to discharge itself, the voltage decreases, and the voltage remains to be 3.7V when the battery is at half charge, ie, 50%SoC.

What is a safe voltage for a lithium ion battery?

Lithium-ion batteries function within a certain range at which their voltage operates optimally and safely. The highest range where the fully charged voltage of a lithium-ion battery is approximately 4.2V per cell. The lowest range which is the minimum safe voltage for lithium-ion batteries is approximately 3.0V per cell.



What is the normal voltage of Ecuador solar container lithium battery

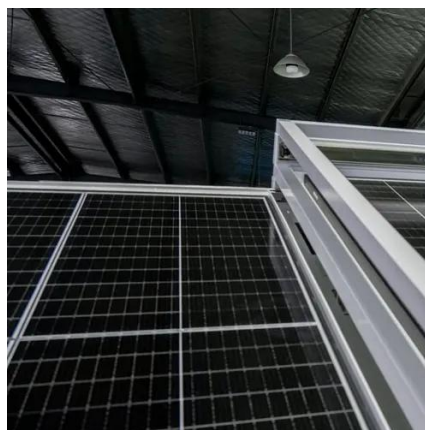


[Lithium Ion Battery Voltage Explained: Everything ...](#)

In the discharge cycle, initially, the voltage will be 4.2V. When we continue to utilize the battery, the voltage may drop to the nominal ...

Lithium-Ion Battery Voltage Chart

Understanding lithium-ion battery voltage is essential for safe usage, maximizing performance, and prolonging battery life. A fully charged cell reads around 4.2V, while a dead ...



Battery Voltage Chart

Based on factors including temperature, discharge rate, and battery type, lead acid battery voltage curves can vary significantly. The table below shows a 6V battery voltage chart using a wet ...

[LiFePO4 Voltage Charts \(1 Cell, 12V, 24V, 48V\)](#)

So when you receive a 12v lifepo4 battery, it will be around 13 volts. You need to know that the discharge rate affects the voltage. If we ...



[The Complete Guide to Lithium-Ion Battery Voltage ...](#)

The ideal voltage for a lithium-ion battery depends on its state of charge and specific chemistry. For a typical lithium-ion cell, the ideal ...



Lithium Ion Battery Voltage Explained: Everything You Need to ...

In the discharge cycle, initially, the voltage will be 4.2V. When we continue to utilize the battery, the voltage may drop to the nominal rate of 3.7V. When used more, the ...



[Lithium-Ion Battery Voltage Breakdown: 12V, 24V, ...](#)

Understanding its voltage levels helps maintain efficiency and longevity. The chart below displays the typical voltage readings at ...





[Lithium-Ion Battery Voltage: How Many Volts And Types ...](#)

What Is the Standard Voltage of a Lithium-Ion Battery? The standard voltage of a lithium-ion battery typically ranges from 3.0 to 4.2 volts per cell. This voltage range is crucial ...



Battery Voltage Explained: Nominal, Charged, Minimum, and Cut ...

Nominal voltage is roughly the average voltage at which a battery operates under normal conditions. It represents a balance between the battery being fully charged and fully ...

Lithium-Ion Battery Voltage Breakdown: 12V, 24V, 48V Explained

Understanding its voltage levels helps maintain efficiency and longevity. The chart below displays the typical voltage readings at different charge percentages. A 48V lithium-ion ...



[The Complete Guide to Lithium-Ion Battery Voltage Charts](#)

The ideal voltage for a lithium-ion battery depends on its state of charge and specific chemistry. For a typical lithium-ion cell, the ideal voltage when fully charged is about ...



Solar Battery Voltage Chart

The solar battery voltage chart enables users to maintain ...



[LiFePO4 Battery Pack: 2025 Technical Parameters Guide](#)

The operating voltage range is the safe voltage window for a LiFePO4 battery pack, from 2.5V (fully discharged) to 3.65V (fully charged). Staying within this range (10V-14.6V for a 12.8V ...

[LiFePO4 Voltage Charts \(1 Cell, 12V, 24V, 48V\)](#)

So when you receive a 12v lifepo4 battery, it will be around 13 volts. You need to know that the discharge rate affects the voltage. If we discharge a battery at 1C, the voltage ...



Lithium-Ion Battery Voltage Chart

Understanding lithium-ion battery voltage is essential for safe usage, maximizing performance, and prolonging battery life. A fully ...



Solar Battery Voltage Chart

The solar battery voltage chart enables users to maintain their batteries within the optimal voltage range, ensuring reliable performance and extended battery life in off-grid or ...





Contact Us

For inquiries, pricing, or partnerships:

<https://sccd-sk.eu>

Phone: +32 2 808 71 94

Email: info@sccd-sk.eu

Scan QR code for WhatsApp.

