



What is the output terminal of the uninterruptible power supply





Overview

The three general categories of modern UPS systems are on-line, line-interactive and standby: • An online UPS uses a "double conversion" method of accepting AC input, to DC for passing through the (or battery strings), then inverting back to 120 V/230 V AC for powering the protected equipment.

The UPS output sockets or output terminal blocks may be electrically live even if the UPS system is not connected to the building mains/live wires (standard models only). In order to fully disconnect the UPS system, first press the "OFF" button and then disconnect.

The UPS output sockets or output terminal blocks may be electrically live even if the UPS system is not connected to the building mains/live wires (standard models only). In order to fully disconnect the UPS system, first press the "OFF" button and then disconnect.

A UPS, or a uninterruptible power supply, is a device used to backup a power supply to prevent devices and systems from power supply problems, such as a power failure or lightning strikes. A UPS can help prevent power supply problems that can often occur on a production site, such as an.

An uninterruptible power supply (UPS) or uninterruptible power source is an electrical apparatus that provides emergency power to a load when the input power source or mains power fails. A UPS differs from an auxiliary or emergency power system or standby generator in that it will provide.

This handbook is your one-stop source for essential information . whether you need power protection for small, medium or large data centers; health care facilities; or other environments in which ensuring uptime and safeguarding data are critical. Why do you need a UPS?

In general, a UPS protects.

The APC Smart-UPS® RT (SURTA1500XL, SURTA1500XLJ, and SURTA2000XL) is a high-performance, Uninterruptible Power Supply (UPS) designed to prevent blackouts, brownouts, sags and surges from reaching your computers, servers, and other sensitive electronic equipment. This manual describes procedures on.

To ensure correct operation of the UPS, please read this instruction manual



carefully. Please keep this manual handy for future reference. This UPS has dangerously high voltages on both its Input and output connections. Contact with these voltages may be life threatening. Please follow the.

The SDU DC is an advanced 24 Vdc UPS that combines an industry leading design, unique installation options, and a wide operational temperature range (see “Specifications”). The SDU DC is a powerful microprocessor-controlled UPS which provides protection from power interruptions and is the ideal.



What is the output terminal of the uninterruptible power supply



Uninterruptible Power Supply (UPS) Application Guide ...

The U05N11V has an L6-30P input cord, which connects to a facility electrical source; the maximum power the cord can supply is 5kW. However, the UPS is equipped with (4) L6-30R ...

Uninterruptible Power Supply (UPS): Block ...

What is a UPS (Uninterruptible Power Supply)? An Uninterruptible Power Supply (UPS) is defined as a piece of electrical ...



CSM_UPS_TG_E_1_1

There are two major classifications of UPSs: DC input/DC output models and AC input/AC output models. Select the optimum UPS for your needs based on the type of power supply, load ...

Uninterruptible Power Supply: What It Is and How It Works

An uninterruptible power supply (UPS) or uninterruptible power system is an electrical unit that provides power for computers,



telecommunication equipment, etc. It not only ...



Eaton UPS fundamentals handbook

Generally used to provide power redundancy to equipment with a single power supply, the eATS automatically transfers power between sources with no interruption if the primary source fails ...



Uninterruptible Power Supply: What It Is and How ...

An uninterruptible power supply (UPS) or uninterruptible power system is an electrical unit that provides power for computers, ...



Product Manual: SDU DC

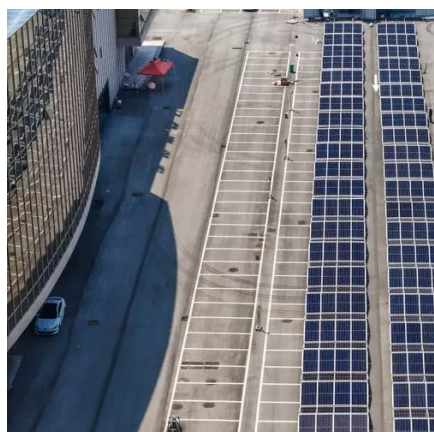
The SDU DC is a powerful microprocessor-controlled UPS which provides protection from power interruptions and is the ideal power backup solution for your critically connected loads.





Smart-UPS RT 1500/2000 UPS Users Manual

The APC Smart-UPS® RT (SURTA1500XL, SURTA1500XLJ, and SURTA2000XL) is a high-performance, Uninterruptible Power Supply (UPS) designed to prevent blackouts, brownouts, ...



Uninterruptible power supply

Overview Technologies Common power problems Other designs Form factors Applications Harmonic distortion Power factor

The three general categories of modern UPS systems are on-line, line-interactive and standby:

- o An online UPS uses a "double conversion" method of accepting AC input, rectifying to DC for passing through the rechargeable battery (or battery strings), then inverting back to 120 V/230 V AC for powering the protected equipment.

Understanding and Implementing an UPS

...

UPS Output: The UPS output is where the connected equipment is connected to the UPS. It provides power to the equipment and protects it ...



Uninterruptible Power Supply (UPS): Block Diagram & Explanation

What is a UPS (Uninterruptible Power Supply)? An Uninterruptible Power Supply (UPS) is defined as a piece of electrical equipment which can be used as an immediate power ...



Uninterruptible power supply

When the incoming voltage falls below or rises above a predetermined level the UPS turns on its internal DC-AC inverter circuitry, which is powered from an internal storage battery. The UPS ...



Deye inverters and Deye batteries are more compatible.

Understanding and Implementing an UPS Connection Diagram ...

UPS Output: The UPS output is where the connected equipment is connected to the UPS. It provides power to the equipment and protects it from power fluctuations, surges, and outages. ...

[Uninterruptible Power Supply Three-Phase User Manual](#)

The UPS output sockets or output terminal blocks may be electrically live even if the UPS system is not connected to the building mains/live wires (standard models only).





Contact Us

For inquiries, pricing, or partnerships:

<https://sccd-sk.eu>

Phone: +32 2 808 71 94

Email: info@sccd-sk.eu

Scan QR code for WhatsApp.

