



What is the power supply used for the base station





Overview

Power Supply: The power source provides the electrical energy to base station elements. It often features auxiliary power supply mechanisms that guarantee operation in case of lost or interrupted electricity, during blackouts.

Power Supply: The power source provides the electrical energy to base station elements. It often features auxiliary power supply mechanisms that guarantee operation in case of lost or interrupted electricity, during blackouts.

As a result, a variety of state-of-the-art power supplies are required to power 5G base station components. Modern FPGAs and processors are built using advanced nanometer processes because they often perform calculations at fast speeds using low voltages (<0.9 V) at high current from compact.

The 5G rollout is changing how we connect, but powering micro base stations—those small, high-impact units boosting coverage in cities and beyond—is no small feat. These stations need reliable, durable, and scalable power to deliver 5G's promise of speed and low latency. At NextG Power, we're.

Power supplies can be employed in each of the three systems that compose wireless base stations. These three systems are known as the environmental monitoring system, the data communication system, and the power supply system. Each of these systems is in turn divided into smaller sections and.

Every scenario is different — that's why we build power solutions just for you. Partner for PV market: resources, installers, distributors. Join renewable energy growth. 1 1. Telecom Base Station Power System: The Basics 1.1 What Does it Mean?

2 2. Cell Tower Energy Solution: A Popular Term in.

As a result, a variety of state-of-the-art power supplies are required to power 5G base station components. Modern FPGAs and processors are built using advanced nanometer processes because they often perform calculations at fast speeds using low voltages (<0.9 V) at high current from compact.

A base station represents an access point for a wireless device to communicate



within its coverage area. It usually connects the device to other networks or devices through a dedicated high bandwidth wire or fiber optic connection. Base stations typically have a transceiver, capable of sending and.



What is the power supply used for the base station



[Building better power supplies for 5G base stations](#)

Building better power supplies for 5G base stations
Authored by: Alessandro Pevere, and
Francesco Di Domenico, both at Infineon
Technologies Infineon Technologies - Technical ...

Base Stations

Power Supply: The power source provides the electrical energy to base station elements. It often features auxiliary power supply mechanisms that guarantee operation in ...



[Complete Guide to 5G Base Station Construction](#)

The base station power system serves as a continuous "blood supply pump station," responsible for AC/DC conversion, filtering, voltage ...



Complete Guide to 5G Base Station Construction , Key Steps, ...

The base station power system serves as a continuous "blood supply pump station," responsible for AC/DC conversion, filtering, voltage



stabilization, and backup power.



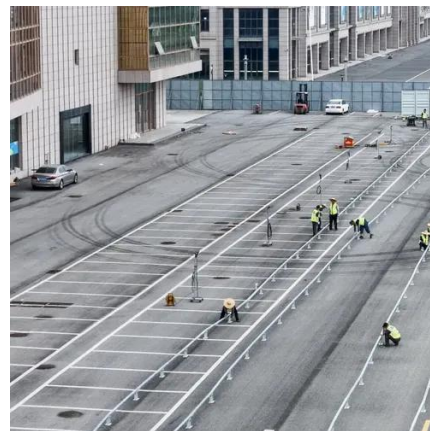
Power Base Station

Maximum base station power is limited to 24 dBm output power for Local Area base stations and to 20 dBm for Home base stations, counting the power over all antennas (up to four).



Power Supply Solutions for Wireless Base Stations Applications

Power supplies can be employed in each of the three systems that compose wireless base stations. These three systems are known as the environmental monitoring system, the data ...



Selecting the Right Supplies for Powering 5G Base Stations

As a result, a variety of state-of-the-art power supplies are required to power 5G base station components. Modern FPGAs and processors are built using advanced nanometer processes ...





Selecting the Right Supplies for Powering 5G Base Stations ...

As a result, a variety of state-of-the-art power supplies are required to power 5G base station components. Modern FPGAs and processors are built using advanced nanometer processes ...



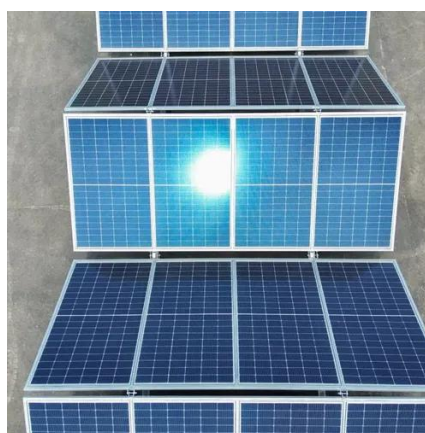
5G macro base station power supply design strategy and ...

For macro base stations, Cheng Wentao of Infineon gave some suggestions on the optimization of primary and secondary power supplies. "In terms of primary power supply, we ...



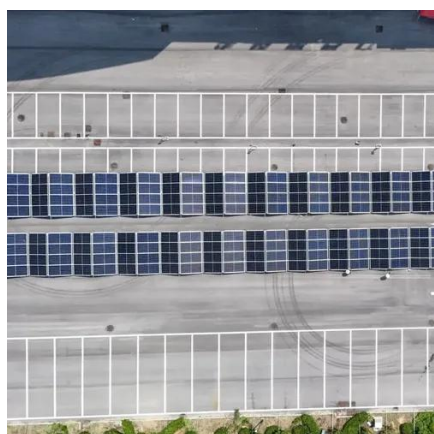
Different English Terms for Telecom Base Station Power Systems

Power Supply Units: The main source of energy for telecom operations. Energy Storage: Batteries that store excess power for later use. Backup Systems: These include ...



Selecting the Right Supplies for Powering 5G Base Stations

As a result, a variety of state-of-the-art power supplies are required to power 5G base station components. Modern FPGAs and processors are built using advanced nanometer processes ...





5G Base Station Power Supply System: NextG Power's Cutting ...

The 2000W/3000W power modules give you flexibility for any station size, while our 20Ah/50Ah LFP batteries offer long-lasting, safe power. The IP65 rating ensures they thrive in tough ...





Contact Us

For inquiries, pricing, or partnerships:

<https://sccd-sk.eu>

Phone: +32 2 808 71 94

Email: info@sccd-sk.eu

Scan QR code for WhatsApp.

