



What is the voltage of the base station power supply





Overview

How much power does a power supply provide?

How Much Power?

Power supplies are often rated by their continuous and intermittent/peak (ICS) current capacities. The figure you want to look at is the continuous rating—the amount of current the power supply can provide. For example, the Samlex SEC-1235P-M switching power supply is rated 30A continuous output, 36A peak.

What does a 42 volt power supply mean?

42V. It means that if the voltage drop is more than 6V, the ICT equipment will be protected. It can be seen that when the length more than 120m in the 4G system and the length more than 70m in the 5G system, the ICT equipment will be off because the low voltage protection of the power supply system.

What voltage does a DSL power system supply?

The DSL power system may supply both higher voltage analog line drivers and amplifiers (typ. +/-12V) and several low voltage supplies required by the digital ASIC (+5V, +3.3V, +1.8V, +1.5V).

What are the different types of power supplies?

Power supplies come in a variety of configurations, from simple to full-featured. Basic models just change 125VAC to 13VDC. Typical add-on features include volt/amp meters, multiple power outputs, noise offset controls to minimize RFI, variable voltage output controls, and over-temperature protection.



What is the voltage of the base station power supply

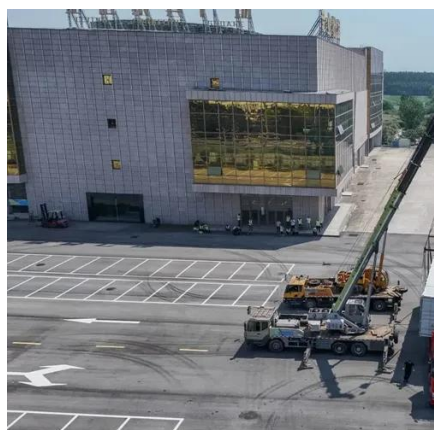


Communications System Power Supply Designs

The power factor corrected (PFC) AC/DC produces the supply voltage for the 3G Base station's RF Power amplifier (typ. +27V) and the bus voltage for point-of-load converters.

what kind of power supplies do you guys use for base station

That radio should run from 11.73v to 15.87v but at 12v and 5 amps, you'll probably put too much demand on that little power supply. I use a switching power supply similar to this one. There ...



Choosing a Power Supply for Your Station

Basic models just change 125VAC to 13VDC. Typical add-on features include volt/amp meters, multiple power outputs, noise offset controls to minimize RFI, variable ...

Study on Power Feeding System for 5G Network

HVDC systems are mainly used in telecommunication rooms and data centers, not in the Base station. With the increase of power

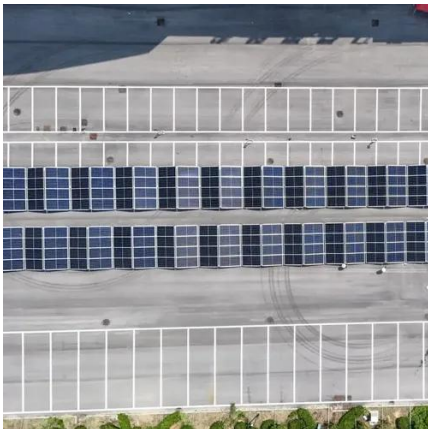


density and voltage drops on the power transmission line in ...



Why does the communication base station use

Because the smallest communications network and communications engineering are in the telephone network, the telecom ...



Samlex America SEC-1223-MT-XPR5000 Base ...

Samlex America's SEC-1223 power supply with radio cover for Motorola MOTOTRBO XPR5000/e Series mobile radios. Converts mobile radio into ...



Selecting the Right Supplies for Powering 5G Base Stations ...

As a result, a variety of state-of-the-art power supplies are required to power 5G base station components. Modern FPGAs and processors are built using advanced nanometer processes ...





Why does the communication base station use -48V power supply?

Because the smallest communications network and communications engineering are in the telephone network, the telecom bureau power supply voltage are 48V.



Base station power supply voltage standard

The DSL power system may supply both higher voltage analog line drivers and amplifiers (typ. +/-12V) and several low voltage supplies required by the digital ASIC (+5V, +3.3V, +1.8V, +1.5V).



what kind of power supplies do you guys use for base station

That radio should run from 11.73v to 15.87v but at 12v and 5 amps, you'll probably put too much demand on that little power supply. I use a switching power supply similar to this ...

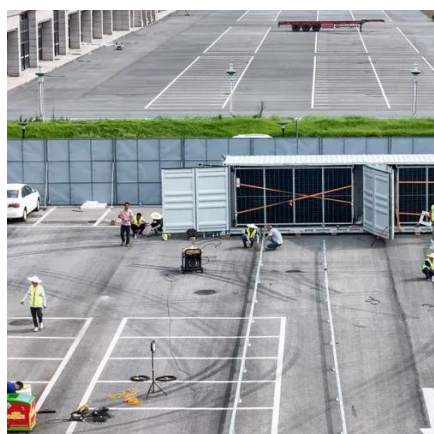


51.2V 150AH, 7.68KWH

Samlex America SEC-1223-MT-XPR5000 Base Station Power Supply

...

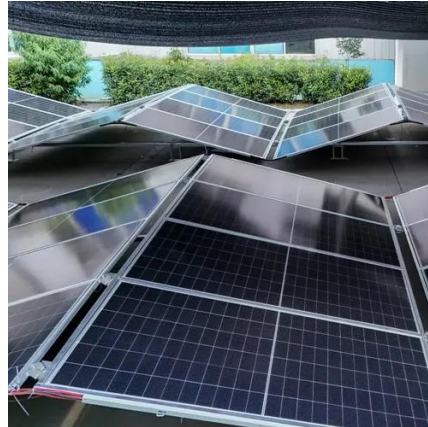
Samlex America's SEC-1223 power supply with radio cover for Motorola MOTOTRBO XPR5000/e Series mobile radios. Converts mobile radio into a base station. SEC-1223 power supply is UL ...





Selecting the Right Supplies for Powering 5G Base Stations

As a result, a variety of state-of-the-art power supplies are required to power 5G base station components. Modern FPGAs and processors are built using advanced nanometer processes ...



LBI-4806E Mastr II Base Station 60Hz Power Supply

When the voltage at the emitter of Q4 causes VR3 to conduct the resulting voltage at the junction of R8 and RIO will turn on Q6. The current through Q6 will turn on Q5 and Q5 will turn on Q4, ...

Selecting the Right Supplies for Powering 5G Base Stations

As a result, a variety of state-of-the-art power supplies are required to power 5G base station components. Modern FPGAs and processors are built using advanced nanometer processes ...





Contact Us

For inquiries, pricing, or partnerships:

<https://sccd-sk.eu>

Phone: +32 2 808 71 94

Email: info@sccd-sk.eu

Scan QR code for WhatsApp.

