



# What kind of battery does Tokyo Energy Storage Station use





## Overview

---

A battery energy storage system (BESS), battery storage power station, battery energy grid storage (BEGS) or battery grid storage is a type of technology that uses a group of in the grid to store . Battery storage is the fastest responding on , and it is used to stabilise those grids, as battery storage can transition fr.

GS Yuasa Corporation (Tokyo Stock Exchange: 6674) has received orders for a lithium-ion battery storage systems with a storage capacity of 14.9MWh ("the facility") from a joint venture company jointly established by sub-subsidiary of Mizuho Leasing Company and Tohoku Electric.

GS Yuasa Corporation (Tokyo Stock Exchange: 6674) has received orders for a lithium-ion battery storage systems with a storage capacity of 14.9MWh ("the facility") from a joint venture company jointly established by sub-subsidiary of Mizuho Leasing Company and Tohoku Electric.

GS Yuasa Corporation (Tokyo Stock Exchange: 6674) has received orders for a lithium-ion battery storage systems with a storage capacity of 14.9MWh ("the facility") from a joint venture company jointly established by sub-subsidiary of Mizuho Leasing Company and Tohoku Electric Power Co.,Inc. The.

One feature of our grid energy storage system is that it utilizes reused batteries from EVs. Although the penetration rate of EVs in Japan is still only about 1%, the Japanese government aims for 100% of all new passenger car sales to be EVs by 2035. This, at the same time, means that more.

Tokyo Electric Power Company Holdings, Inc. (TEPCO HD) and Toyota Motor Corporation (Toyota) have developed a stationary storage battery system (1 MW output, 3 MWh capacity) that combines TEPCO's operating technology and safety standards for stationary storage batteries and Toyota's system.

TOKYO, JAPAN — PowerX, Inc. (Head Office: Tamano City, Okayama Prefecture; Director, President and CEO: Masahiro Ito) announced that it has received an order for 24 units of its “Mega Power 2700A” battery energy storage system (BESS), totaling 65.8 MWh in capacity. The systems are for a new.

A battery energy storage system (BESS), battery storage power station, battery energy grid storage (BEGS) or battery grid storage is a type of energy storage technology that uses a group of batteries in the grid to store electrical energy.



Battery storage is the fastest responding dispatchable.

Fun fact: The station's thermal management system uses phase-change materials that absorb heat like a sponge - 30% more efficient than traditional liquid cooling! After implementing similar equipment configurations, Osaka's renewable integration rate jumped from 68% to 89% within 18 months. Key. What is a battery energy storage system?

A battery energy storage system (BESS), battery storage power station, battery energy grid storage (BEGS) or battery grid storage is a type of energy storage technology that uses a group of batteries in the grid to store electrical energy.

What is EV battery station?

After more than a decade of experiment, we developed the EV Battery Station, a large-scale energy storage system that combines hundreds of reused batteries to provide high output and capacity so that it can be connected to the power grid.

Can TEPCO HD & Toyota use a stationary storage battery system?

To this end, TEPCO HD and Toyota have jointly developed a stationary storage battery system that can be used in combination with existing PCS \*2 by connecting multiple storage batteries for electric vehicles.

How long do battery energy storage systems last?

Battery energy storage systems are generally designed to deliver their full rated power for durations ranging from 1 to 4 hours, with emerging technologies extending this to longer durations to meet evolving grid demands.



## What kind of battery does Tokyo Energy Storage Station use



### Battery energy storage system

OverviewConstructionSafetyOperating characteristicsMarket development and deployment

A battery energy storage system (BESS), battery storage power station, battery energy grid storage (BEGS) or battery grid storage is a type of energy storage technology that uses a group of batteries in the grid to store electrical energy. Battery storage is the fastest responding dispatchable source of power on electric grids, and it is used to stabilise those grids, as battery storage can transition fr...

### Development and Verification of Stationary Storage ...

To this end, TEPCO HD and Toyota have jointly developed a stationary storage battery system that can be used in combination with ...



### ???? ?? ?????? KIND

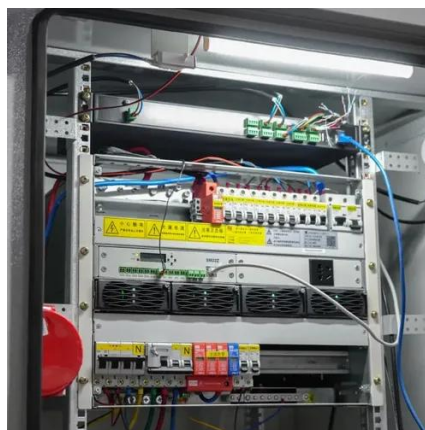
???? ?? ?????? KIND?? ????? ?????? KRX-Papago?? ????? ETF/ELW/ETN/???

### ???? ?? ?????? KIND





???? ?? ?????? KIND?? ??? 2012? 5??? ????? (???)  
?? ?????? . ? ??? ?? ?? ?? ??, ??? ?????? ??? ? ?????? ???  
...

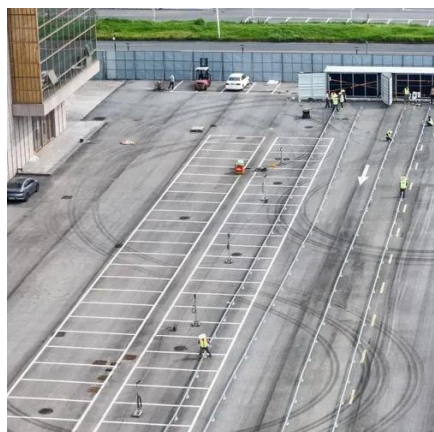


**???? ?? ?????? KIND**

???? ?? ?????? KIND ?? , ??? , ??? , ??? , ??? , ??  
, ??/? , ??? , ?????? ?? , ??? , ?????? ?? ?? , ...

## Battery energy storage system

A battery energy storage system (BESS), battery storage power station, battery energy grid storage (BEGS) or battery grid storage is a type of energy storage technology that uses a ...



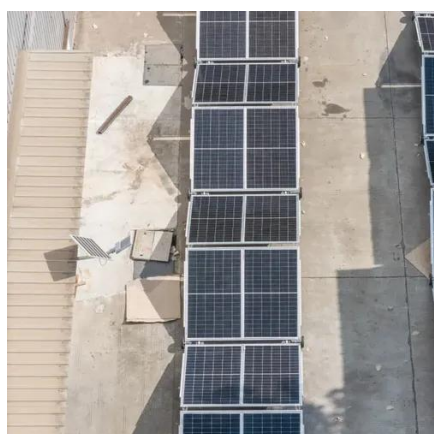
**???? ?? ?????? KIND**

???? ?? ?????? KIND????????? ?? ?????? KIND



## Key Equipment of Tokyo Energy Storage Power Station A...

From battery chemistry to smart grid integration, Tokyo's energy storage success story offers valuable lessons for cities worldwide. As storage costs continue falling (42% since 2018), ...



## **Japan's Secondary Battery Energy Storage Stations: Powering a**

Japan's energy storage landscape isn't a one-size-fits-all situation. Think of it like a sushi platter - different technologies serving distinct purposes: Toshiba's SCiB batteries ...

???? ?? ?????? KIND

???? ??? ????? ????? ?? ?????? KIND.



## **Tokyo Century to build four additional wholly-owned extra high ...**

Tokyo Century will invest in four wholly-owned extra high-voltage grid-scale battery storage projects totaling 101MW/386.3MWh, the company announced on December 12, 2025. ...





## Development and Verification of Stationary Storage Battery ...

To this end, TEPCO HD and Toyota have jointly developed a stationary storage battery system that can be used in combination with existing PCS \*2 by connecting multiple ...



???? ?? ?????? KIND

???? ?? ?????? KIND???? ?? ?? ?? ?? ??????  
???????? ???? ??



## What kind of battery does Tokyo Energy Storage Station use

Global energy storage specialist, Eku Energy, has announced the Hirohara Battery Energy Storage System (BESS) located in Oaza Hirohara, Miyazaki City, Miyazaki Prefecture.



???? ?? ?????? KIND (2)

???? ?? ?????? KIND???? ??????? 01-02 20:02 ???  
?????? ???? 01-02 20:02 ?????? ?????? (?????, 3???)  
...





## Large-scale energy storage business

After more than a decade of experiment, we developed the EV Battery Station, a large-scale energy storage system that combines hundreds of reused batteries to provide high output and ...



???? ?? ?????? KIND

???? ?? ?????? KIND?? ??? ????? ?? ?????? ?? ???  
SPAC??? ?? ??? ????? ? ?????? ??? ??????. ? ??? ?? ??  
...



## Large-scale energy storage business

After more than a decade of experiment, we developed the EV Battery Station, a large-scale energy storage system that combines hundreds of ...



???? ?? ?????? KIND

???? ?? ?????? KIND2012? 3? ?? ?????????? ?? ?? ???  
??? ??? ????. ?????? ?? ?????? ??, ?????? ??????? ??????. ?  
...

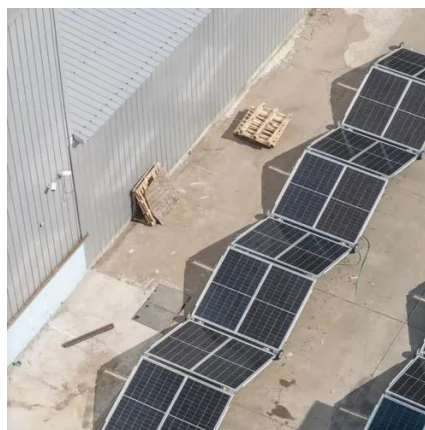






## PowerX to Supply Battery Energy Storage Systems to Tokyo ...

TOKYO, JAPAN -- PowerX, Inc. (Head Office: Tamano City, Okayama Prefecture; Director, President and CEO: Masahiro Ito) announced that it has received an order for 24 ...



## PowerX to Supply Battery Energy Storage ...

TOKYO, JAPAN -- PowerX, Inc. (Head Office: Tamano City, Okayama Prefecture; Director, President and CEO: Masahiro Ito) ...



## Orders of 14.9MWh Lithium-ion Storage Battery System, For energy

These storage systems are equipped with the "LEPS-2-14" lithium-ion battery for industrial use which is manufactured by GS Yuasa. The receipt of this order was secured as a ...



## ???? ?? ?????? KIND

???? ?? ?????? KIND ???? ?? ?? (????, ???-????) ???  
?????. ?? ??? SPAC??? ?? ??? ???? ? ?????? ??? ...





## Contact Us

---

For inquiries, pricing, or partnerships:

<https://sccd-sk.eu>

Phone: +32 2 808 71 94

Email: [info@sccd-sk.eu](mailto:info@sccd-sk.eu)

Scan QR code for WhatsApp.

