



Overview

★ The split-phase inverter requires 240VAC input and can provide 120VAC or 240VAC output power for all kinds of appliances, and it can output 50 or 60Hz via the SW4.

★ The split-phase inverter requires 240VAC input and can provide 120VAC or 240VAC output power for all kinds of appliances, and it can output 50 or 60Hz via the SW4.

★ The split-phase inverter requires 240VAC input and can provide 120VAC or 240VAC output power for all kinds of appliances, and it can output 50 or 60Hz via the SW4. ★ AC/Battery Priority: The 24 volt/ 48 volt split phase inverter is designed with AC priority by default, you can choose the battery.

In the rapidly evolving world of electrical power and distribution, 48V low frequency inverters have emerged as game-changers. These innovative devices have revolutionized the way we harness and utilize energy, leading to significant improvements in efficiency and performance. In this comprehensive.

Our line of ETL listed to UL 48 Volt DC split phase 120/240 Volt AC inverter chargers is the power house for back up, off grid systems. Built with a 48 Volt DC input, these inverter chargers perform with very little power loss. Users receive a notable increase in efficiency in large systems when.

A low-frequency 48V split-phase inverter with a pure copper transformer. Converts 48V DC to 120V/240V AC with selectable 50Hz/60Hz frequency via the LCD screen. Designed for off-grid inverter systems, solar hybrid applications, and home backup power, ensuring a stable split-phase power supply for.

The Phoenix Inverter VE.Direct is a uniquely compact, low-frequency inverter with a built-in full bridge toroidal transformer allowing it to handle large surge capacity from inductive loads. The Phoenix is distinctly efficient, with around 10W standard idle consumption or as low as 1-2w in eco.

A 48V inverter is a device that converts 48 volts of direct current (DC), which is normally stored in a battery, to alternating current (AC), which is used to power common household appliances. This is critical in solar power systems because



solar panels and batteries use DC power, while most.



What power supply does the 48v low frequency inverter use



6000W DC 48V Off grid Low frequency Split Phase Solar Inverter

...

This Pure Sine Wave Solar Inverter is a combination of an inverter, ac battery charger, MPPT solar charge controller and AC auto-transfer switch.

Victron Phoenix Inverter 48/1200

The Victron Phoenix Inverter 48/1200 delivers 1200VA at 120VAC from ...



[Amazon : ZLPOWER UL1741 12000W 48V Hybrid Solar Inverter...](#)

A low-frequency 48V split-phase inverter with a pure copper transformer. Converts 48V DC to 120V/240V AC with selectable 50Hz/60Hz frequency via the LCD screen.

[Maximizing Efficiency with 48V Low Frequency Inverters: A](#)

48V low frequency inverters have proven to be highly efficient in converting DC power to AC power. With their advanced technology and



design, they minimize energy losses, resulting in ...



[AIMS Power, PICOGLF120W48V240VS, 12000 Watt Pure Sine](#)

Our line of ETL listed to UL 48 Volt DC split phase 120/240 Volt AC inverter chargers is the power house for back up, off grid systems. Built with a 48 Volt DC input, these inverter chargers ...



48V Inverter: The Ultimate Guide to Efficient and Scalable Power

The central role of a 48V inverter is to convert the direct current (DC) from your 48V battery bank into alternating current (AC), the power needed for most household ...



Victron Phoenix Inverter 48/1200

The Victron Phoenix Inverter 48/1200 delivers 1200VA at 120VAC from 48VDC, with VE.Direct--ideal for efficient, reliable off-grid or backup power use.





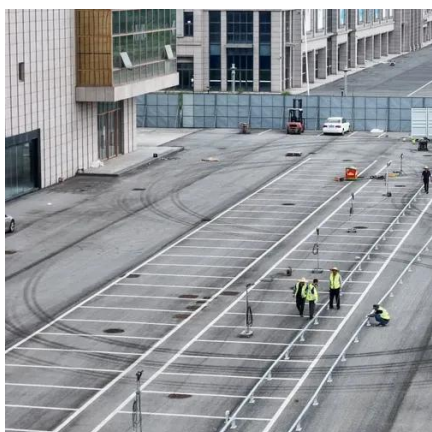
12000 watt inverter charger

Built with a 48 Volt DC input, these inverter chargers perform ...



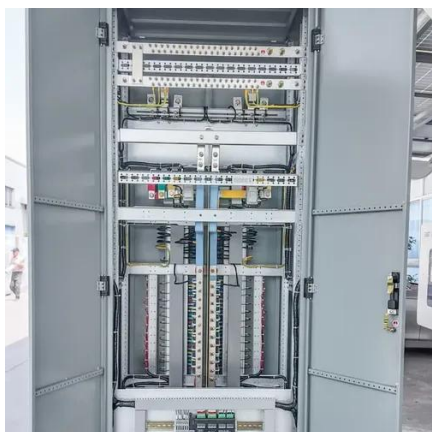
12000 watt inverter charger

Built with a 48 Volt DC input, these inverter chargers perform with very little power loss. Users receive a notable increase in efficiency in large systems when compared to using inverters ...



[Amazon : ZLPOWER UL1741 12000W 48V Hybrid Solar ...](#)

A low-frequency 48V split-phase inverter with a pure copper transformer. Converts 48V DC to 120V/240V AC with selectable 50Hz/60Hz frequency via the LCD screen.



[48V DC low frequency MPPT hybrid inverter](#)

In summary, the transformer type inverter has the advantages of high power and high stability, and its low efficiency and high price are its main disadvantages.



48 Volt Split Phase Inverter Online

The split-phase inverter requires 240VAC input and will output 110/120 or 220/230/240VAC, and it can output 50 or 60Hz via the SW4. It is capable of producing 2 legs of 110V, making this ...



[Low Frequency Inverter 48V Customized Manufacturers ...](#)

Our Low Frequency Inverter 48V converts 48V DC power to clean AC power with exceptional reliability and surge capacity, making it ideal for powering sensitive equipment and motors in ...



Contact Us

For inquiries, pricing, or partnerships:

<https://sccd-sk.eu>

Phone: +32 2 808 71 94

Email: info@sccd-sk.eu

Scan QR code for WhatsApp.

