



What power supply equipment does the base station consist of





Overview

The base station power system serves as a continuous "blood supply pump station," responsible for AC/DC conversion, filtering, voltage stabilization, and backup power. Its purpose is to ensure the uninterrupted operation of base station equipment.

The base station power system serves as a continuous "blood supply pump station," responsible for AC/DC conversion, filtering, voltage stabilization, and backup power. Its purpose is to ensure the uninterrupted operation of base station equipment.

A base station represents an access point for a wireless device to communicate within its coverage area. It usually connects the device to other networks or devices through a dedicated high bandwidth wire or fiber optic connection. Base stations typically have a transceiver, capable of sending and.

China's total 5G network investment for 2020-2025 is estimated at 0.9-1.5 trillion yuan, with a large portion allocated to base stations. This article summarizes the main cost components of a 5G macro base station and provides a rough cost breakdown. Because China's operators are state-owned.

The cabinet houses critical components like main base station equipment, transmission equipment, power supply systems, and battery banks. Meanwhile, the pole serves as a mounting point for antennas, Remote Radio Units (RRUs), and other equipment, often resembling a "candied hawthorn stick" in its.

A typical 5G beamforming transmitter comprising digital MIMO, data converters, signal processing components, amplifiers, and antennas is shown in Figure 1. 2 Figure 1. A high level block diagram of a beamforming transmitter for 5G systems. In order to fully realize the benefits of 5G, designers.

The EverExceed base station system is equipped with an AC and DC system, which consists of an AC distribution box/panel, a -48V high-frequency switch combined power supply (including AC distribution unit, high-frequency switch rectifier module, monitoring module, DC distribution unit) and one (or).

What is a base station?



Simply put, a base station (BS) is a wireless transceiver device in a mobile communication network that provides wireless coverage and communicates with mobile terminals like your phone. It acts as a bridge, connecting your phone to a vast communication network to ensure.



What power supply equipment does the base station consist of



[Selecting the Right Supplies for Powering 5G Base Stations](#)

A single RoHS compliant BGA package integrates a switching controller, power switches, an inductor, and all the supporting components. In some cases, to maximize power supply ...

[Complete Guide to 5G Base Station Construction](#)

The base station power system serves as a continuous "blood supply pump station," responsible for AC/DC conversion, filtering, voltage ...



Complete Guide to 5G Base Station Construction , Key Steps, Equipment

The base station power system serves as a continuous "blood supply pump station," responsible for AC/DC conversion, filtering, voltage stabilization, and backup power.



[What Components Make Up a 5G Base Station?](#)

Summing the above, building a complete 5G base station costs roughly 450,000 yuan. This is about four times the cost of a comparable 4G base

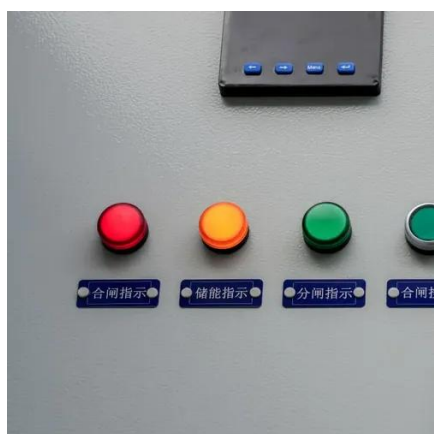


station and does not include ...



Basic components of a 5G base station

The power supply part is mainly composed of power sources (power electronic devices) and backup batteries. The power sources are the ...



Telecom Base Station Power System Solution

The EverExceed base station system is equipped with an AC and DC system, which consists of an AC distribution box/panel, a -48V high-frequency switch combined power supply (including ...



An Introduction to 5G and How MPS Products Can Optimize ...

The base station is comprised of two main components: the active antenna unit (AAU) and the baseband unit (BBU) (see Figure 1). The AAU receives and transmits the radio signals that ...





Power Base Station

The RF requirements define the receiver and transmitter RF characteristics of a base station or UE. The base station is the physical node that transmits and receives RF signals on one or ...



Basic components of a 5G base station

The power supply part is mainly composed of power sources (power electronic devices) and backup batteries. The power sources are the interface to the AC distribution networks and ...

Selecting the Right Supplies for Powering 5G Base Stations

A single RoHS compliant BGA package integrates a switching controller, power switches, an inductor, and all the supporting components. In some cases, to maximize power supply ...



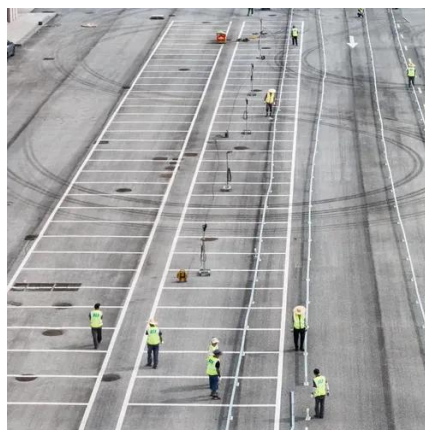
What Is a Base Station? Exploring the Core of 5G ...

This article will guide you to a deeper understanding of a base station's composition and working principles, with a special focus on the ...



Base Station Equipment - SolveForce Fiber Internet, Cloud ...

Power Supply: Base station equipment requires a stable power supply to operate. Redundant power supplies are often used to ensure continuous operation even in case of power outages.



What Is a Base Station? Exploring the Core of 5G Networks and ...

This article will guide you to a deeper understanding of a base station's composition and working principles, with a special focus on the impact of heat on base station ...

Base Stations

Power Supply: The power source provides the electrical energy to base station elements. It often features auxiliary power supply mechanisms that guarantee operation in ...





Contact Us

For inquiries, pricing, or partnerships:

<https://sccd-sk.eu>

Phone: +32 2 808 71 94

Email: info@sccd-sk.eu

Scan QR code for WhatsApp.

