



# What size inverter should I use for 12v140AH





## Overview

---

After hands-on testing and side-by-side comparison, I confidently recommend the BELTTT 2000W Pure Sine Wave Inverter as your best-sized inverter for a 12-volt battery—perfect when power quality and capacity really matter. Top Recommendation: BELTTT 2000W Pure Sine Wave Inverter, 12V.

After hands-on testing and side-by-side comparison, I confidently recommend the BELTTT 2000W Pure Sine Wave Inverter as your best-sized inverter for a 12-volt battery—perfect when power quality and capacity really matter. Top Recommendation: BELTTT 2000W Pure Sine Wave Inverter, 12V.

Determining what size inverter do I need depends on several critical factors related to your power consumption, device requirements, and system design. The first step is calculating the total wattage of all devices you want to power simultaneously. This includes every appliance, light, and piece of.

After hands-on testing and side-by-side comparison, I confidently recommend the BELTTT 2000W Pure Sine Wave Inverter as your best-sized inverter for a 12-volt battery—perfect when power quality and capacity really matter. Top Recommendation: BELTTT 2000W Pure Sine Wave Inverter, 12V to 120V AC, USB.

Choosing the right inverter size is crucial—too small, and your appliances won't work; too large, and you'll waste money. This guide will help you determine the ideal inverter size for your specific needs, whether for home backup, RV living, or off-grid solar power. 1. Introduction: Why Inverter.

We created a comprehensive inverter size chart to help you select the correct inverter to power your appliances. The need for an inverter size chart first became apparent when researching our DIY solar generator build. Solar generators range in size from small generators for short camping trips to.

Sizing your inverter depends on your load profile, environmental factors, and inverter specs The solar inverter serves as the heart of any photovoltaic (PV) power system, performing the critical function of converting the direct current (DC) electricity generated by solar panels or stored in.

Standard 12v models top out around 3000w (24v/48v ~ 4000w). To proceed:



Upgrade to a higher-voltage system (24 V/48 V) for a larger inverter. Consider a higher-voltage system for a bigger inverter. Pick your appliances. Use the dropdown to add common devices—or enter your own custom items. Minimum. What size inverter for a 12V 200Ah battery?

For a 12V 200Ah battery (2.4kWh), a 2000W inverter is ideal. Formula: Inverter Wattage  $\leq$  (Battery Voltage  $\times$  Ah Rating  $\times$  0.8). Factor in surge power needs but prioritize sustained loads. Always check the battery's max discharge rate (C-rate) to avoid exceeding safe limits. When sizing for 24V or 48V systems, recalculate using the higher voltage.

What wattage Inverter should I use?

Match the inverter's continuous wattage rating to the battery's discharge capacity. For a 12V 200Ah battery (2.4kWh), a 2000W inverter is ideal. Formula: Inverter Wattage  $\leq$  (Battery Voltage  $\times$  Ah Rating  $\times$  0.8). Factor in surge power needs but prioritize sustained loads.

What size inverter do I Need?

The inverter size calculator takes the guesswork out of choosing the right inverter. Simply select your appliances below, and you'll instantly see the inverter size you need. Standard 12v models top out around 3000w (24v/48v ~ 4000w). To proceed: Upgrade to a higher-voltage system (24 V/48 V) for a larger inverter.

How much power does a 12V inverter use?

Standard 12v models top out around 3000w (24v/48v ~ 4000w). To proceed: Upgrade to a higher-voltage system (24 V/48 V) for a larger inverter. Consider a higher-voltage system for a bigger inverter. Pick your appliances. Use the dropdown to add common devices—or enter your own custom items.



## What size inverter should I use for 12v140AH

---



### [How Do I Calculate What Size Inverter I Need?](#)

Properly sizing your inverter ensures reliable, efficient performance. The size of the inverter directly impacts the operation of ...

### **How to Choose the Right Size Solar Inverter: Step-by-Step with ...**

Wondering what size solar inverter do I need for your solar system? This guide walks you through calculating inverter size based on panel capacity, power usage, and safety ...



### [The Only Inverter Size Chart You'll Ever Need](#)

Sizing your inverter depends on your load profile, environmental factors, and inverter specs.



### **What size inverter do I need?**

Sizing your inverter depends on your load profile, environmental factors, and inverter specs.



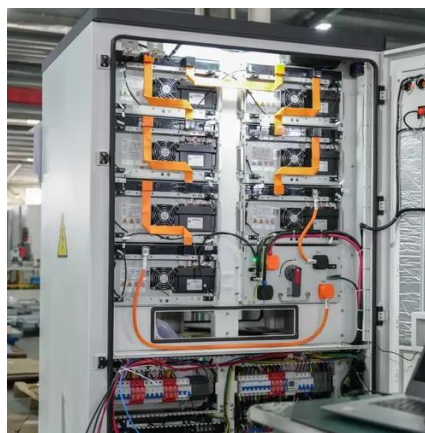
## [What Size Inverter Do I Need? A Comprehensive Guide to ...](#)

Proper inverter sizing affects energy efficiency, system longevity, and whether your inverter works well with your battery setup. This inverter sizing guide will take you through the ...



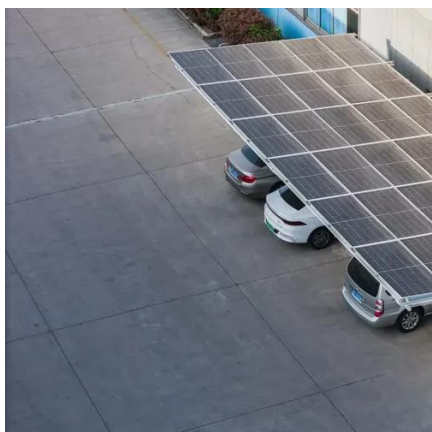
## **What Size Inverter Do I Need? A Comprehensive Guide to Inverter ...**

Proper inverter sizing affects energy efficiency, system longevity, and whether your inverter works well with your battery setup. This inverter sizing guide will take you through the ...



## [Can an Inverter Be Too Big for Your Battery System?](#)

Match the inverter's continuous wattage rating to the battery's discharge capacity. For a 12V 200Ah battery (2.4kWh), a 2000W inverter is ideal. Formula: Inverter Wattage  $\leq$  (Battery ...





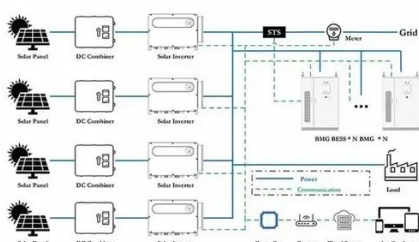
## [Inverter Size Calculator , Find Your Perfect Power Match](#)

The inverter size calculator takes the guesswork out of choosing the right inverter. Simply select your appliances below, and you'll instantly see the inverter size you need.



## **Inverter Size Calculator**

The Inverter Size Calculator is a powerful tool to help you select the right inverter based on your specific load requirements, efficiency level, and safety needs.



## [How Do I Calculate What Size Inverter I Need?](#)

Properly sizing your inverter ensures reliable, efficient performance. The size of the inverter directly impacts the operation of connected devices and appliances. With insufficient ...



## [best sized inverter for 12 volt battery](#)

After hands-on testing and side-by-side comparison, I confidently recommend the BELTTT 2000W Pure Sine Wave Inverter as your best-sized inverter for a 12-volt ...





## [best sized inverter for 12 volt battery](#)

After hands-on testing and side-by-side comparison, I confidently recommend the BELTTT 2000W Pure Sine Wave Inverter as ...



## [How to Choose the Right Size Solar Inverter: Step ...](#)

Wondering what size solar inverter do I need for your solar system? This guide walks you through calculating inverter size based on ...

## [The Only Inverter Size Chart You'll Ever Need](#)

We have created a comprehensive inverter size chart to help you select the correct inverter to power your appliances.



## **What Size Inverter Do You Need? A Complete Guide for Home, ...**

Choosing the right inverter size is crucial--too small, and your appliances won't work; too large, and you'll waste money. This guide will help you determine the ideal inverter ...



## Contact Us

---

For inquiries, pricing, or partnerships:

<https://sccd-sk.eu>

Phone: +32 2 808 71 94

Email: [info@sccd-sk.eu](mailto:info@sccd-sk.eu)

Scan QR code for WhatsApp.

