



# What size inverter should I use with a 100ah solar container lithium battery





## Overview

---

A 100Ah battery can support a 1000W inverter for roughly one hour. Avoid using a 2000W inverter with a single 100Ah battery, as it may overdraw. For higher power requirements, add more batteries or opt for a 3000W inverter to meet startup currents effectively.

A 100Ah battery can support a 1000W inverter for roughly one hour. Avoid using a 2000W inverter with a single 100Ah battery, as it may overdraw. For higher power requirements, add more batteries or opt for a 3000W inverter to meet startup currents effectively.

A 100Ah lithium battery can typically support an inverter up to 1,200W for 1 hour, assuming a 12V system. Actual runtime depends on load wattage and battery voltage. For example, a 600W load would run ~2 hours at 12V, factoring in 90% inverter efficiency. Always check your battery's voltage.

A 100Ah (amp-hour) battery delivers 100 amps for one hour, 10 amps for 10 hours, or 1 amp for 100 hours, depending on the load. The actual usable energy depends on: For a 12V 100Ah battery: That means you can run a 120W device for 10 hours (roughly), or a 1000W device for just over 1 hour— if the.

A 100Ah battery can support a 1000W inverter for roughly one hour. Avoid using a 2000W inverter with a single 100Ah battery, as it may overdraw. For higher power requirements, add more batteries or opt for a 3000W inverter to meet startup currents effectively. The power output of an inverter is.

Choosing the right inverter for a 100Ah battery is critical for maximizing power efficiency in RVs, solar setups, and off-grid systems. This article reviews five top inverters and battery combos optimized for 100Ah batteries, considering power output, battery type compatibility, safety features.

When selecting an inverter to pair with a 100Ah battery, it's crucial to understand the power requirements of your appliances and the capabilities of your inverter. The right combination ensures efficiency, longevity, and optimal performance. This detailed guide will help you navigate through the.

A 100Ah battery typically supports an inverter size up to about 1000 watts for



standard applications, balancing efficient runtime and battery health. Selecting the right inverter size depends on battery voltage, power consumption of connected devices, inverter efficiency, and safe operating limits.



## What size inverter should I use with a 100ah solar container lithium b

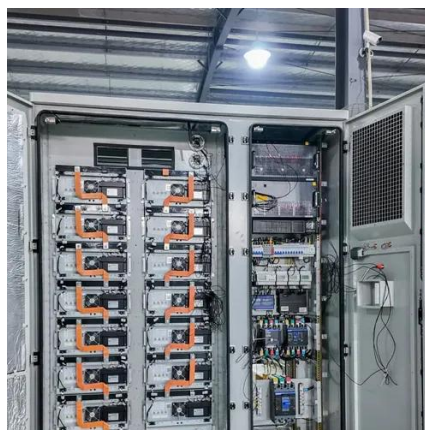


### What Size Inverter Can I Run Off a 100Ah Battery? Maximize ...

What Size Inverter Is Safe to Use with a 100Ah Battery? The safe inverter size to use with a 100Ah battery is typically between 300W to 1200W, depending on your power ...

### [What Size Inverter Do I Need for a 100Ah Battery?](#)

A 100Ah battery typically supports an inverter size up to about 1000 watts for standard applications, balancing efficient runtime and battery health. Selecting the right ...



### [What Size Inverter for 100Ah Battery? - MWXNE POWER](#)

In this guide, we'll walk you through what size inverter works best with a 100Ah battery, how long your battery will last, and how to size your inverter-and-battery combo for ...

### What Size Inverter for 100Ah Battery? , 12V, 24V, 48V Battery Inverter

In this video, I break down everything you need to know about inverter sizing, battery compatibility,



and power runtime -- in simple, practical terms.  
We'll calculate how ...



## How to Determine What Size Inverter You Can Run Off a 100Ah Battery

Determining the appropriate size of an inverter that can be run off a 100Ah battery involves understanding both the power output of the inverter and the energy capacity of the battery. A ...

## Best Inverters Compatible With 100Ah Battery for RVs, Solar, and ...

Choosing the best inverter to pair with a 100Ah battery requires weighing several factors to ensure efficiency, longevity, and safety in your power system. Not all inverters are ...



## [What Size Inverter Can I Run Off a 100Ah Battery? A ...](#)

A 100Ah battery typically operates at 12 volts (V), so you need a 12V inverter. Using an inverter with the correct input voltage ensures compatibility and prevents damage to ...





## What Inverter Size is Best for a 100Ah Battery?

A 12V 100Ah battery can reasonably power an inverter up to 1000W-1200W for short periods. For continuous loads, 500W-800W is more efficient and battery-friendly.



## Sizing the Right Inverter for 100ah Battery

Based on the total load of 325 watts, you'll need at least a 350W inverter to power them well with a 100Ah battery. Although, it is ...



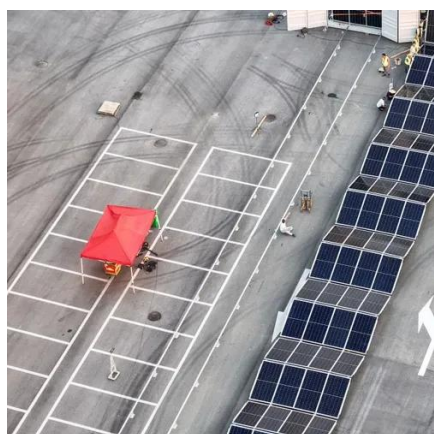
## **How to Determine What Size Inverter You Can Run Off a 100Ah ...**

Determining the appropriate size of an inverter that can be run off a 100Ah battery involves understanding both the power output of the inverter and the energy capacity of the battery. A ...



## Sizing the Right Inverter for 100ah Battery

Based on the total load of 325 watts, you'll need at least a 350W inverter to power them well with a 100Ah battery. Although, it is advisable to add an extra 20% to the total load ...





## What size inverter can I run off a 100Ah lithium battery?

Yes, a 1000W inverter is safe for continuous use with a 100Ah lithium battery. It matches the typical output of the battery and allows for stable operation of multiple devices without risking ...



## Best Inverters Compatible With 100Ah Battery for ...

Choosing the best inverter to pair with a 100Ah battery requires weighing several factors to ensure efficiency, longevity, and ...



## **What Size Inverter for 100Ah Battery? , 12V, 24V, 48V Battery ...**

In this video, I break down everything you need to know about inverter sizing, battery compatibility, and power runtime -- in simple, practical terms. We'll calculate how ...





## Contact Us

---

For inquiries, pricing, or partnerships:

<https://sccd-sk.eu>

Phone: +32 2 808 71 94

Email: [info@sccd-sk.eu](mailto:info@sccd-sk.eu)

Scan QR code for WhatsApp.

