



What size is a 48V 1000W solar panel





Overview

On average, a 1000-watt solar panel may have dimensions of around 65 inches by 40 inches and weigh anywhere between 50-60 lbs. These typical dimensions can change based on the cell technology, frame type, and other factors discussed earlier.

On average, a 1000-watt solar panel may have dimensions of around 65 inches by 40 inches and weigh anywhere between 50-60 lbs. These typical dimensions can change based on the cell technology, frame type, and other factors discussed earlier.

Unlike lower-voltage systems (e.g., 12V or 24V), a 48V configuration operates at a higher voltage, which offers distinct advantages: Reduced Energy Loss: Higher voltage means lower current for the same power output, minimizing losses in cables and connections. Scalability: It's perfect for systems.

Typically, a 1000 watt solar panel is not a single panel but rather a collection of panels working together to produce that amount of power. This means that the size and number of panels can vary significantly based on their efficiency ratings and design. For instance, high-efficiency panels can.

Typically, a 1000-watt solar panel, which is considered high-capacity, may vary in size depending on the technology used. For instance, panels utilizing more efficient cells, such as monocrystalline silicon, may be smaller than those using less efficient cells like polycrystalline silicon.

A Solar Panel and Battery Sizing Calculator is an invaluable tool designed to help you determine the optimal size of solar panels and batteries required to meet your energy needs. By inputting specific details about your energy consumption, this calculator provides tailored insights into the solar.

12V and 24V solar panel systems are still the most commonly used, but 48V batteries are becoming prevalent. If you want to buy a 48V battery, you have to use the right solar panel sizes and voltage to get the best charging time. Three 350 watt solar panels connected in a series can charge a 48V.

There are 3 standardized sizes of solar panels, namely: 60-cell solar panels size.



The dimensions of 60-cell solar panels are as follows: 66 inches long, and 39 inches wide. That's basically a 66×39 solar panel. But what is the wattage?

That is unfortunately not listed at all. 72-cell solar panel. How much power does a 48V Solar System use?

Solar panels come in various wattages, typically 200W to 500W per panel. For a 48V solar system, the goal is to select panels that, when wired together, match the system's voltage and deliver the required power. Here's a breakdown by system size: Small Systems (1-2 kW): For daily needs of 5-10 kWh, 4-6 panels at 300W-400W each work well.

What is the difference between a 5000W and a 1000W Solar System?

A typical conventional home will have a solar panel system size of 3000-5000w. In comparison, a 1000w solar panel system is usually considered to be smaller in size, but it still has some unique advantages. First of all, a 1000w solar panel system requires fewer solar panels and it is cheaper.

How much power does a solar panel use?

Suppose you only run: Estimated Usage: ~1,000 Wh/day Battery Size (12V system): $1,000 \text{ Wh} \div 12\text{V} \approx 84 \text{ Ah/day}$ Solar Panel Size: $1,000 \text{ Wh} \div 350 = \sim 3 \times 100\text{W}$ panels ($\approx 300\text{W}$ total) Recommended Setup: A 3×100W panel kit with MPPT controller, plus a 200Ah lead-acid bank or 100Ah lithium battery.

What is a 1000W solar panel system?

In comparison, a 1000w solar panel system is usually considered to be smaller in size, but it still has some unique advantages. First of all, a 1000w solar panel system requires fewer solar panels and it is cheaper. It can save you most of the upfront investment costs while allowing you to enjoy saving electricity costs by utilizing green energy.



What size is a 48V 1000W solar panel

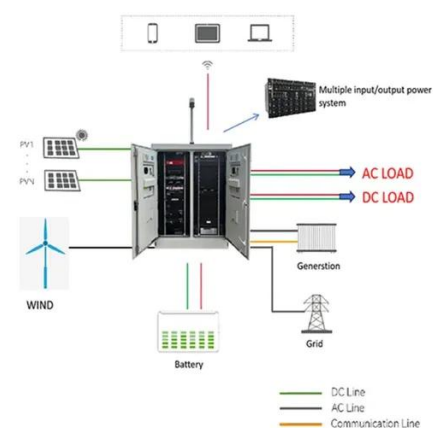
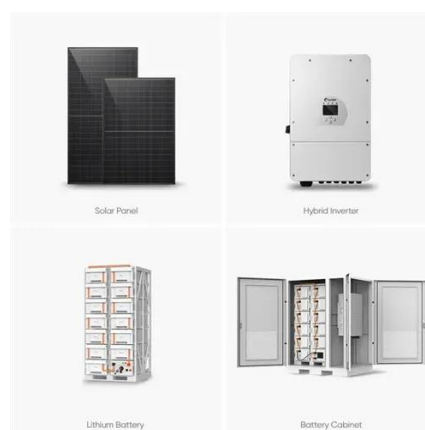


[How to Size Your RV Solar System \(2025 Guide\)](#)

It's smart to size your panel array 10-20% larger than the minimum needed. Example: If you calculate 600W of panels, consider ...

[Guide to 1000 Watt Solar Panel Kits \[2025 Updates\]](#)

In a standard 1000 watt setup, you'll usually find between 4 to 6 panels. The DC-to-AC inverter is the next integral part. It has one important job - to transform the direct current ...



[Solar Panel and Battery Sizing Calculator](#)

Specify the solar panel wattage you plan to use. The result will estimate how many panels you need to meet your energy goals. Enter the ...

[Solar Panel Size Calculator , Check Battery ...](#)

Required Solar Panel Size = $1800\text{Wh} / (5 \text{ hours} \times 4 \text{ hours}) = 1800\text{Wh} / 20\text{h} = 90\text{W}$. So, you would need a solar panel with at least 90W ...



Application scenarios of energy storage battery products



What Solar Panel Size Do I Need to Charge a 48V Battery?

A 100ah 48V battery holds 4800 watts, so you need solar panels that can produce at least that amount. 3 x 350W solar panels can charge the battery in 5 hours. Assuming each panel ...

What Size Solar Panel is Best for a 48V Solar System? A ...

Discover the optimal solar panel power for a 48V solar system. Learn how to size panels, calculate energy needs, and design an efficient setup for your home or off-grid project.



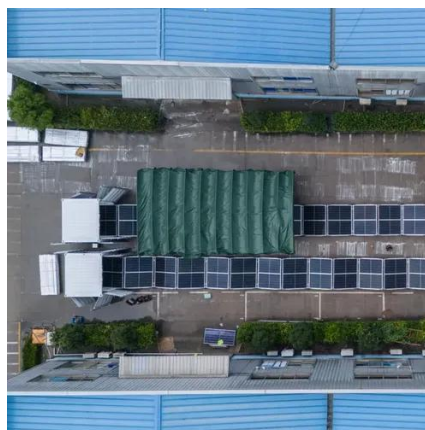
Standard Solar Panel Sizes And Wattages (100W-500W ...

The goal here is to get to the average solar panel size by wattage. You can find typical dimensions of 100W, 150W, 170W, 200W, 200W, 220W, 300W, 350W, 400W, and 500W solar ...



What Size is a 1000 Watt-Solar Panel?

Find out What Size is a 1000 Watt-Solar Panel? Learn about its dimensions, specifications, and space requirements for installation.

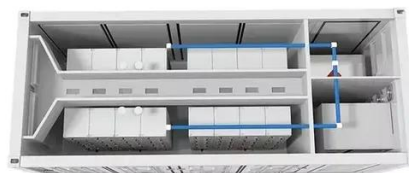


How Big is a 1000 Watt Solar Panel and What You Need to Know

In this article, we will explore the dimensions and characteristics of a 1000 watt solar panel system. You will learn about the average size of individual panels, how many you ...

Solar Panel and Battery Sizing Calculator

Specify the solar panel wattage you plan to use. The result will estimate how many panels you need to meet your energy goals. Enter the battery storage capacity, allowing the ...



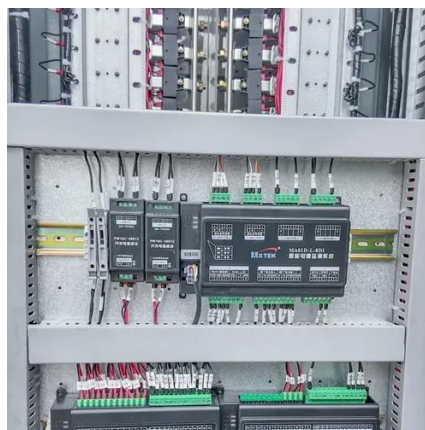
Solar Panel Size Calculator , Check Battery Charge Duration

Required Solar Panel Size = $1800\text{Wh} / (5 \text{ hours} \times 4 \text{ hours}) = 1800\text{Wh} / 20\text{h} = 90\text{W}$. So, you would need a solar panel with at least 90W capacity to charge your 150Ah, 12V ...



[How to Size Your RV Solar System \(2025 Guide\)](#)

It's smart to size your panel array 10-20% larger than the minimum needed. Example: If you calculate 600W of panels, consider installing 660-720W to compensate for ...

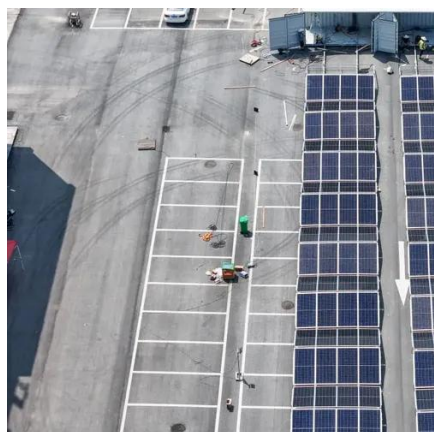


[1000 Watt Solar Panel Systems: Everything You Need to Know](#)

There are various sizes of solar panels on the market, in order to achieve the 1000w power rating of the system, you can choose 5 pieces of 200w solar panels, or 10 pieces ...

[1000 Watt Solar Panel Systems: Everything You ...](#)

There are various sizes of solar panels on the market, in order to achieve the 1000w power rating of the system, you can choose 5 ...



[What Solar Panel Size Do I Need to Charge a 48V Battery?](#)

How to Match Solar Panel Voltage and Battery Voltage
How to Increase Solar Panel Voltage
PWM vs. Mppt Charge Controllers For 12V/24V/48V Systems
How Long Does It Take to Charge A 48V Battery?
Battery Capacity and Charge Time
Conclusion
A 48V battery requires a good sized solar system to work. You have to make sure the panels not only provide enough power, but it must also have the right voltage. Lastly, be certain



you are using a charge controller that works for this type of battery. See more on [portablesolarexpert](#) The Green Watt

Standard Solar Panel Sizes And Wattages (100W ...

The goal here is to get to the average solar panel size by wattage. You can find typical dimensions of 100W, 150W, 170W, 200W, 200W, 220W, ...

[Guide to 1000 Watt Solar Panel Kits \[2025](#)

...

In a standard 1000 watt setup, you'll usually find between 4 to 6 panels. The DC-to-AC inverter is the next integral part. It has one ...





Contact Us

For inquiries, pricing, or partnerships:

<https://sccd-sk.eu>

Phone: +32 2 808 71 94

Email: info@sccd-sk.eu

Scan QR code for WhatsApp.

