



What type of wind power supply does the 5g base station use





Overview

What is a 5G base station?

A 5G network base-station connects other wireless devices to a central hub. A look at 5G base-station architecture includes various equipment, such as a 5G base station power amplifier, which converts signals from RF antennas to BUU cabinets (baseband unit in wireless stations).

How much power does a 5G base station use?

Each nation has a different 5G strategy. For 5G, China uses 3.5GHz as the frequency. Then, a 5G base station resembles a 4G system, but it's on a much larger scale. For sub-6GHz in 5G, let's say you have a macro base station. The power levels at the antenna range from 40 watts, 80 watts or 100 watts.

Why is Infineon developing a 500-W 5G PSU?

thermal resistance between the device and heatsink. This and other techniques, such as greater use of planar magnetics, have enabled Infineon to develop a prototype 500-W 5G PSU that delivers high efficiency in a dense, low-profi.

Why do we use a dual-boost topology in a 5G PSU?

o implement each approach and the thermal behavior. For example, in our 500-W 5G PSU design, we have chosen a dual-boost topology using silicon MOSFETs, partly because this approach spreads the thermal losses due to switching across two devices, reducing the amount each h ats up and creating two lower-temperature hotspots. Below in Fig. 4 is



What type of wind power supply does the 5g base station use



Selecting the Right Supplies for Powering 5G Base Stations

A single RoHS compliant BGA package integrates a switching controller, power switches, an inductor, and all the supporting components. In some cases, to maximize power supply ...

Selecting the Right Supplies for Powering 5G Base Stations

A single RoHS compliant BGA package integrates a switching controller, power switches, an inductor, and all the supporting components. In some cases, to maximize power supply ...



CN111447693A

The sail module and the power generation module are erected on a high-rise signal tower, the conversion efficiency is improved through the built-in speed-increasing gear structure, the ...



5G Base Station Power Supply System: NextG Power's Cutting ...

The 2000W/3000W power modules give you flexibility for any station size, while our 20Ah/50Ah LFP batteries offer long-lasting, safe power. The



IP65 rating ensures they thrive in tough ...



Detailed explanation of 5G communication base station wind ...

Explore how 5G base stations are built--from site planning and cabinet installation to power systems and cooling solutions. Learn the essential components, technologies, and challenges ...

Building Better Power Supplies For 5G Base Stations

Building Better Power Supplies For 5G Base Stations by Alessandro Pevere, and Francesco Di Domenico, Infineon Technologies, Villach, Austria according to Ofcom, the UK's telecoms ...



Power Supply for 5G Infrastructure . Renesas

Renesas' 5G power supply system addresses these needs and is compatible with the -48V Telecom standard, providing optimal performance, reduced energy consumption, and robust ...





The Road to Robust 5G: A Deep Dive into Base Station Power Supply

Leveraging our market-proven product performance and system adaptability, we have built a product line that covers all power supply scenarios for base stations, providing ...



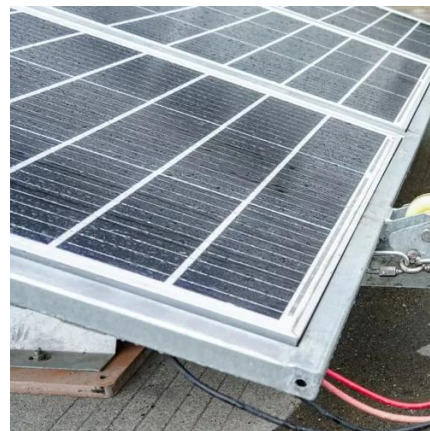
5G BASE STATION USING WIND POWER GENERATION ...

China Tower and Huawei conducted joint pilot verification in 2018 and found that the 5G Power solution could support effective 5G site deployment without changing the grid, power ...



The Road to Robust 5G: A Deep Dive into Base Station Power ...

Leveraging our market-proven product performance and system adaptability, we have built a product line that covers all power supply scenarios for base stations, providing ...



THE POWER SUPPLY DESIGN CONSIDERATIONS FOR 5G ...

The wind-solar-diesel hybrid power supply system of the communication base station is composed of a wind turbine, a solar cell module, an integrated controller for hybrid energy ...





5G BASE STATION WIND POWER PHOTOVOLTAIC ENERGY ...

Built at the Marseille-Fos Port, the marine geothermal power station Thassalia is the first in France, and even in Europe, to use the sea's thermal energy to supply linked buildings with ...

INTEGRATED DESIGN

EASY TO TRANSPORT AND INSTALL,
FLEXIBLE DEPLOYMENT



THE POWER SUPPLY DESIGN CONSIDERATIONS FOR 5G BASE ...

The wind-solar-diesel hybrid power supply system of the communication base station is composed of a wind turbine, a solar cell module, an integrated controller for hybrid energy ...





Contact Us

For inquiries, pricing, or partnerships:

<https://sccd-sk.eu>

Phone: +32 2 808 71 94

Email: info@sccd-sk.eu

Scan QR code for WhatsApp.

