



Where are the hybrid energy base stations in Guatemala built





Overview

SBI finished construction of the project in 2019. The new Oxec II hydroelectric project not only brings sustainable energy to Guatemala, but serves as a precedent for future builds due to its unique features and innovative construction methodologies.

SBI finished construction of the project in 2019. The new Oxec II hydroelectric project not only brings sustainable energy to Guatemala, but serves as a precedent for future builds due to its unique features and innovative construction methodologies.

Global Bioenergy Power Tracker, a Global Energy Monitor project. Santa Lucía power station (Planta De Vapor Molino Santa Lucía, Planta cogeneradora Santa Lucía) is an operating power station of at least 45-megawatts (MW) in Santa Lucia Cotzumalguapa, Escuintla, Guatemala. It is also known as Santa.

Following the construction of the Oxec I hydroelectric project, Energy Resources Capital entered a joint venture with SBI Holdings International AG through our subsidiary, Hatch, to construct the Oxec II hydroelectric project: a generating station consisting of a concrete gravity dam, a.

Global Bioenergy Power Tracker, a Global Energy Monitor project. Madre Tierra power station (Planta cogeneradora Madre Tierra) is an operating power station of at least 37-megawatts (MW) in Santa Lucía Cotzumalguapa, Escuintla, Guatemala. Loading map. Unit-level coordinates (WGS 84): This.

Las Palmas power station (Planta Eléctrica Las Palmas 2) is an operating power station of at least 67-megawatts (MW) in Escuintla City, Escuintla, Guatemala with multiple units, some of which are not currently operating. Loading map. Unit-level coordinates (WGS 84): CHP is an abbreviation for.

Global Bioenergy Power Tracker, a Global Energy Monitor project. San Isidro power station (Planta cogeneradora San Isidro) is an operating power station of at least 62-megawatts (MW) in Municipio de Retalhuleu, Retalhuleu, Guatemala. Loading map. Unit-level coordinates (WGS 84): This ownership.

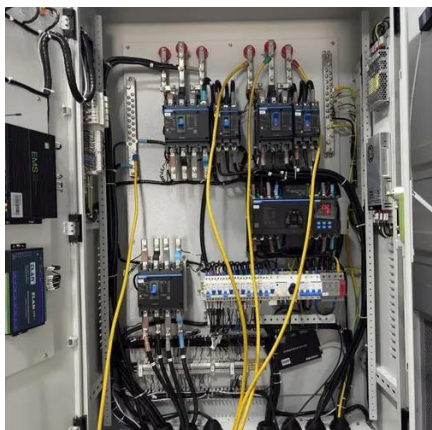
San José power station (Planta Eléctrica San José) is an operating power station of



at least 139-megawatts (MW) in Masagua, Escuintla, Guatemala. Loading map. Unit-level coordinates (WGS 84): This ownership tree is part of the Global Energy Ownership Tracker, a project of Global Energy Monitor.



Where are the hybrid energy base stations in Guatemala built



Las Palmas power station

Las Palmas power station (Planta Eléctrica Las Palmas 2) is an operating power station of at least 67-megawatts (MW) in Escuintla City, Escuintla, Guatemala with multiple units, some of which ...

OXEC II Hydroelectric Power Station

Completed in 2019, the Oxec II hydroelectric project features major structural innovations designed to reliably provide sustainable energy to Guatemala for years to come.



Trinidad power station

The Guatemalan Ministry of Energy and Mines lists five generating units at the Ingenio Trinidad power plant. Units 1 and 2, with a combined capacity of 21 MW, were apparently inactive as of ...



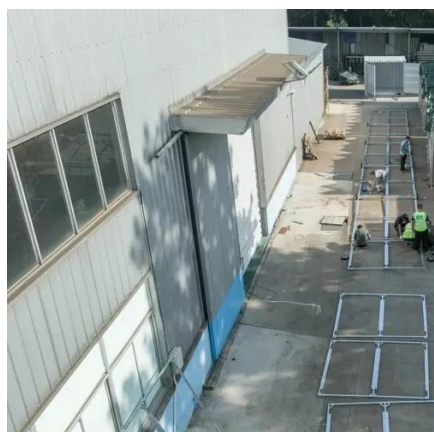
Santa Lucía power station

Santa Lucía power station (Planta De Vapor Molino Santa Lucía, Planta cogeneradora Santa Lucía) is an operating power station of at least 45-megawatts (MW) in Santa Lucia ...



San Isidro power station

San Isidro power station (Planta cogeneradora San Isidro) is an operating power station of at least 62-megawatts (MW) in Municipio de Retalhuleu, Retalhuleu, Guatemala.



San José power station

San José power station (Planta Eléctrica San José) is an operating power station of at least 139-megawatts (MW) in Masagua, Escuintla, Guatemala.



Madre Tierra power station

Madre Tierra power station (Planta cogeneradora Madre Tierra) is an operating power station of at least 37-megawatts (MW) in Santa Lucía Cotzumalguapa, Escuintla, Guatemala.





3,700 MW of renewable potential identified for Guatemala ...

The Renewable Energy Generators Association (AGER) has identified an impressive renewable capacity potential of 3,700 MW that could be incorporated into ...

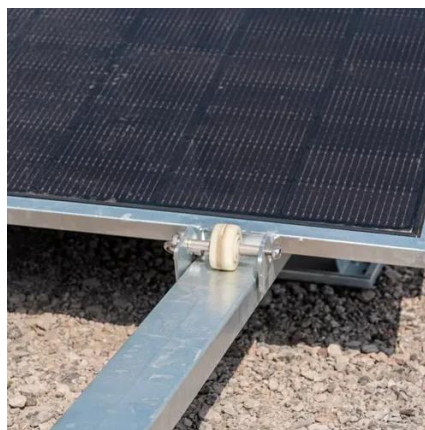


Ingenio La Unión power station

Get all information about Ingenio La Unión power station in Guatemala here. Invest profitably in renewables for a cleaner future!

Guatemala Power Plants

List of power plants in Guatemala from OpenStreetMap





Contact Us

For inquiries, pricing, or partnerships:

<https://sccd-sk.eu>

Phone: +32 2 808 71 94

Email: info@sccd-sk.eu

Scan QR code for WhatsApp.

