



Where is the EMS base station in Thimphu





Overview

Battalion 58 East 83rd. Street Station.

Battalion 58 East 83rd. Street Station.

But in a country with rugged and mountainous terrain, transport to the nearest health-care facility can take hours, which is critical to patient care. The Bhutan Foundation is working to address these issues by building Bhutan's capacity in emergency medical services. Building Local In-Country.

NewYork-Presbyterian Emergency Medical Services (NYP-EMS) has more than fifty state-of-the-art ambulance units — including the first mobile stroke treatment unit on the East Coast — serving all five boroughs of New York City, and Westchester, Putnam, and Dutchess counties. Our fleet includes basic.

Battalion 58 East 83rd. Street Station .

The information contained on the linked pdf documents below shows EMS agencies currently certified as Ambulances or Advanced Life Support First Response Services or as entities recognized as Basic Life Support First Response services. These EMS agencies may be owned privately or publicly. They may.

The New York City EMS System is comprised of over 70 Emergency Medical Service agencies from the Volunteer, Proprietary, Hospital-Based and Municipal Sectors. Each sector of EMS serves a unique and important role in the EMS System and operates under the protocols established by the Regional EMS.

The New York City Fire Department Bureau of Emergency Medical Services (FDNY EMS) is a division of the New York City Fire Department (FDNY) in charge of emergency medical services for New York City. It was established on March 17, 1996, following the merger of the FDNY and New York City Health and. What is the New York City EMS system?

The New York City EMS System is comprised of over 70 Emergency Medical Service agencies. These agencies are from the Volunteer, Proprietary, Hospital-Based, and Municipal Sectors, each serving a unique role in the EMS System. They operate under the protocols established by the Regional EMS Council of NYC.



How do I contact Tompkins County EMS?

Fire/EMS Coordinator Tompkins County Department of Emergency Response 92 Brown Road Ithaca NY 14850 (607) 257-3888 (607) 266-8035 jmvann@tompkins-co.org Ulster Pamela Finnerty EMS Coordinator Ulster County Emergency Services 238 Golden Hill Lane Kingston NY 12401 (845) 331-7000 (845) 331-1738 pfin@co.ulster.ny.us Warren Micki Guy EMS Coordinator.

How do I contact Chenango EMS?

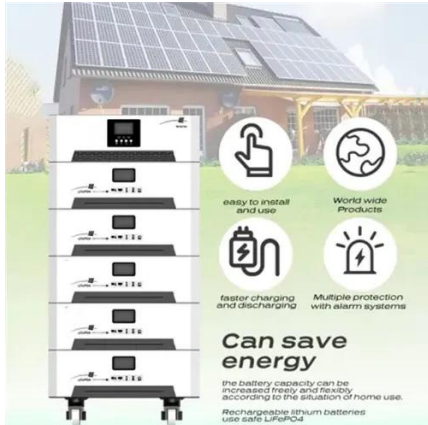
14903 (607) 734-5017 (607) 732-4062 eambulance1@stny.rr.com Chenango Stephen Cady Deputy Fire Coordinator / EMS Chenango County Bureau of Fire 279 County Road 46 Norwich NY 13815 (607) 226-3681 (607) 334-2003 dfc5@chenangofireems.com Clinton Storm Treanor EMS Coordinator Clinton County Emergency Services 16 Emergency Services Drive Plattsburg NY.

What happened to NYC EMS?

Prior to March 17, 1996, municipal ambulances were operated by NYC EMS under the New York City Health and Hospitals Corporation, a public benefit corporation, which dispatched both its own ambulances and hospital ambulances. On March 17, 1996, NYC EMS merged with the FDNY, forming the Bureau of EMS.



Where is the EMS base station in Thimphu



Memes of EMS

A collection point for all the memes and images relating to medical first responders.

Do you like being an EMT? : r/ems

/r/EMS is a subreddit for medical first responders to hang out and discuss anything related to emergency medical services.



EMS User Verification : r/fortinet

Hi All, Trying to setup EMS cloud and struggling with user verification. What does your setups typically look like? Perhaps I'm missing something and what I'm trying to configure ...

[New York City Fire Department Bureau of EMS](#)

It was established on March 17, 1996, following the merger of the FDNY and New York City Health and Hospitals Corporation 's emergency medical ...



[NYP-Safety-Emergency Medical Services-Ambulance Services](#)

Non-Critical and Critical Emergencies
Critical Care Transports
Patient Transfer Center
Whether day or night, your call will be answered by the NYP STAT Transfer Nurse Coordinator of your choice, Adult or the newly created Pediatric/Neonatal/OB Transfer Nurse Coordinator, who will gather pertinent information necessary to initiate the hospital-to-hospital patient transfer process. See more on nyp FDNY

Divisions and Battalions FDNY/EMS - nyfd

Battalion 58 East 83rd. Street Station.

[EMS Agency and Hospital Information By County](#)

County EMS Coordinators Hospital Information by County EMS Location Codes



[EMS Contention Cancellation : r/VeteransBenefits](#)



Hello. I had "EMS Contention Cancellation" pop-up on my claim today. It was back in September but just showed up today. Any idea what it means? I called the VA and they said they ...

CHART narrative : r/ems

/r/EMS is a subreddit for medical first responders to hang out and discuss anything related to emergency medical services.

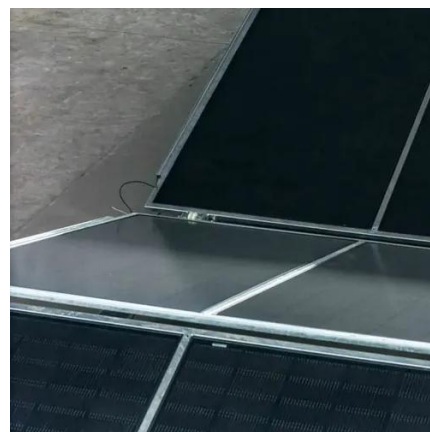


EMS Agency and Hospital Information By County

Areas of coverage for certified services are determined by a Certificate of Need (CON) process, as required by Article 30 of the Public health Law, ...

I had a question about

This subreddit's mission is to provide resources, support, feedback, and a community for those interested in emergency medical services. Discuss, ask, and answer questions about EMS ...





Emergency Medicine Services

Then, in 2013, the Foundation helped establish the National Emergency Education Center in Thimphu, Bhutan, with a fully staffed Bhutanese ...



[Ranks within EMS organizations : r/ems](#)

/r/EMS is a subreddit for medical first responders to hang out and discuss anything related to emergency medical services.



[Opinions on EMS \(electrical muscle stimulation\)?](#)

Imo EMS is not a must very good for recovery and increasing volume, for those who actually train in the gym/sports. Elite athletes are familiar with it for a reason. But of course people are lazy ...



Bureau of EMS

The proposed relocation project and EMS Station 49 proximity the Triboro Bridge. The regulatory site has been paperwork, identified will require in the ments structure funding are in the ...





EMS Base Stations

Maryland's designated EMS Base Stations provide quality on-line medical direction to the State's EMS clinicians. The following information comprises a toolbox for EMS Base Station staff to ...

Regional EMS Agencies

Each sector of EMS serves a unique and important role in the EMS System and operates under the protocols established by the Regional EMS Council of NYC. All EMS ...



[C.A.R.E. ILA Local 1975, Cleveland EMS union](#)

EMS headquarters is the primary point of NON-Emergency contact for Cleveland EMS. Hours: 9 am to 4pm weekdays. ...

FDNY EMS & NYC 911 EMS

r/FDNYEMS: Any questions or news regarding FDNY EMS, or NYC EMS 911 in NYC. Please search through previous threads before asking a question. Consider...





[Forticlient/EMS IP settings : r/fortinet](https://www.reddit.com/r/fortinet)

Hey folks, got a quick question about Forticlient and FortiEMS settings. Currently, we're pushing the client install through Intune, which works great in the office because the ...





Contact Us

For inquiries, pricing, or partnerships:

<https://sccd-sk.eu>

Phone: +32 2 808 71 94

Email: info@sccd-sk.eu

Scan QR code for WhatsApp.

