



Where is the Gaborone power system base station





Overview

The power station is located near the town of Palapye, in the Central District, approximately 270 kilometres (168 mi), by road, north-east of Gaborone, Botswana's capital city. [2] .

The power station is located near the town of Palapye, in the Central District, approximately 270 kilometres (168 mi), by road, north-east of Gaborone, Botswana's capital city. [2] .

Morupule Thermal Power Station is a coal -fired power station in Botswana. It is responsible for an estimated 80 percent of the country's domestic power generation. [1] The power station is located near the town of Palapye, in the Central District, approximately 270 kilometres (168 mi), by road.

Botswana Power Corporation, a parastatal utility which was formed in 1970 by an Act of Parliament is responsible for the generation, transmission and distribution of electricity within Botswana to areas approved by the Ministry of Minerals Resources, Green Technology and Energy Security. The.

Botswana Power Corporation, a parastatal utility which was formed in 1970 by an Act of Parliament is responsible for the generation, transmission and distribution of electricity within Botswana to areas approved by the Ministry of Minerals Resources, Green Technology and Energy Security. The.

Botswana's national electricity grid comprises of 1,246 kilometers of 400kV transmission lines, 2,200 kilometers of 220kV lines and 2,162 kilometers of 132kV lines. It further includes a total of 54 substations that facilitate bulk electricity supply to various customer categories. Distribution is.

Botswana Power Corporation (BPC) is a state-owned entity created by Act of Parliament in 1970. BPC is responsible for generating, transmitting and distributing electricity within the country to areas approved by the Ministry of Minerals, Green Technology and Energy Resources. Electricity generation.

Mission Statement : The Botswana Power Corporation strives at all times to generate, transmit, distribute and supply electricity in the most safe, reliable, effective, affordable and environmentally friendly manner to enhance the social



and economic well-being of the nation. The Botswana Power. Where is a thermal power station located in Gaborone?

The Corporation, within the forty-eight years of its existence, has developed from a small, oil-fired power station in Gaborone which was commissioned in 1970 and dismantled in 1989 to one Thermal Power Station at Morupule situated some twelve kilometres west of Palapye village in the Central District.

Where is electricity generated in Gaborone?

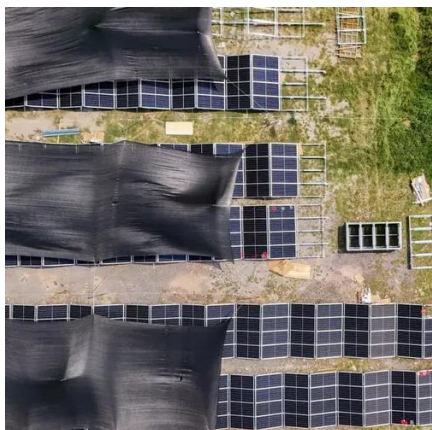
Electricity generation has developed from a small oil-fired power station in Gaborone, commissioned in 1970 and dismantled in 1989, to two thermal power stations at Morupule, near Palapye. The Corporation also has two small standby diesel-fueled power stations at Orapa (90MW) and Matshelagabedi (70MW) to supplement generation if needed.

What is a power station based in Gaborone & Morupule & Selebi-Phikwe?

The Corporation, within the twenty-three years of its existence, has developed from a small, oil-fired power station in Gaborone (which was commissioned in 1970 and dismantled in 1989) to better and more efficient thermal power stations in Selebi-Phikwe and Morupule using locally mined coal.



Where is the Gaborone power system base station



[Botswana Power Corporation BPC Contacts, ...](#)

The Corporation, within the forty-eight years of its existence, has developed from a small, oil-fired power station in Gaborone which ...

BOTSWANA : ELECTRICITY

The Corporation, within the twenty-three years of its existence, has developed from a small, oil-fired power station in Gaborone (which was commissioned in 1970 and dismantled in 1989) to ...



[Botswana Power Corporation BPC Contacts, Address](#)

The Corporation, within the forty-eight years of its existence, has developed from a small, oil-fired power station in Gaborone which was commissioned in 1970 and dismantled in ...



Global Smart Energy Federation

Electricity generation has developed from a small oil-fired power station in Gaborone, commissioned in 1970 and dismantled in 1989, to two thermal ...



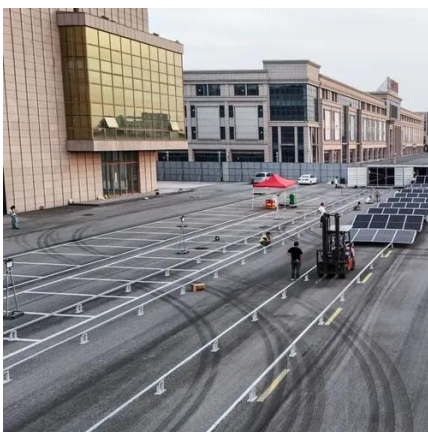
Our Customer Base

The Orapa 90MW Turbine Power Plant is a dual fuel plant which can operate on both or either liquid fuel (diesel) and gas. The Orapa facility is currently operated on diesel as no gas is ...



Morupule Thermal Power Station Explained

The power station is located near the town of Palapye, in the Central District, approximately 270km (170miles), by road, north-east of Gaborone, Botswana's capital city.



Botswana Power Corporation

The Corporation, within the forty-eight years of its existence, has developed from a small, oil-fired power station in Gaborone which was commissioned in 1970 and dismantled in 1989 to one ...



Botswana's power sector infrastructure . African ...

Revised in April 2025, this map provides a detailed view of the power sector in Botswana. The locations of power generation facilities ...



Utilities in Botswana

The state-owned Botswana Power Corporation generates, transmits and distributes all electricity in Botswana. The coal-fired Morupule Power Station at Palapye has a total installed capacity ...



Morupule Thermal Power Station

The power station is located near the town of Palapye, in the Central District, approximately 270 kilometres (168 mi), by road, north-east of Gaborone, Botswana's capital city. [2]



Global Smart Energy Federation

Electricity generation has developed from a small oil-fired power station in Gaborone, commissioned in 1970 and dismantled in 1989, to two thermal power stations at Morupule, ...



The Transmission Grid

Distribution is provided at voltages of 33kV and 11kV, with sub-transmission operating at 66kV.



Our Customer Base

The Orapa 90MW Turbine Power Plant is a dual fuel plant which can operate on both or either liquid fuel (diesel) and gas. The Orapa facility is currently ...



Botswana Power Corporation

The Corporation, within the forty-eight years of its ...



[Botswana's power sector infrastructure . African Energy](#)

Revised in April 2025, this map provides a detailed view of the power sector in Botswana. The locations of power generation facilities that are operating, under construction ...



Contact Us

For inquiries, pricing, or partnerships:

<https://sccd-sk.eu>

Phone: +32 2 808 71 94

Email: info@sccd-sk.eu

Scan QR code for WhatsApp.

