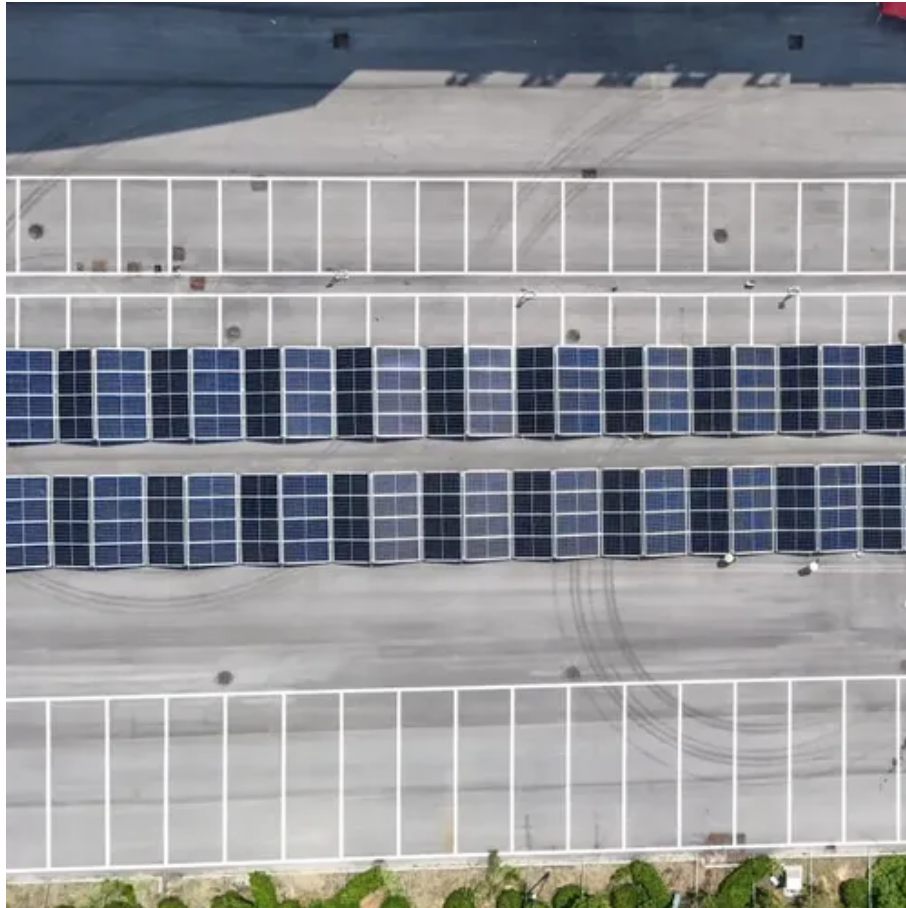




Why do containers need base stations





Overview

While containers are built with durable Corten steel and can be placed directly on the ground, a stable and level base helps prevent structural issues, rust, and sinking over time.

While containers are built with durable Corten steel and can be placed directly on the ground, a stable and level base helps prevent structural issues, rust, and sinking over time.

Whether you're placing a single unit or stacking up a full-on container home, the right base keeps everything level, secure, and safe from the elements. This article is built for anyone working with shipping container buildings, whether it's temporary or here to stay. We'll break down when you.

Without a good base, container home, joined containers, container studio, event container, office container, grow room or special container projects can sink into soft or uneven ground over time, causing many problems, like: Uneven weight distribution: When a storage box sinks unevenly, it puts.

When planning to place a shipping container on your personal property or for your business, one common question comes up: do you need a foundation?

While containers are built to be durable, the ground you place them on can affect how well they hold up over time. In this post, we'll walk through.

You might be wondering, 'Do shipping containers really need a foundation?

' The answer is yes, but it's not as simple as you think. The type of foundation you choose can drastically influence the performance of your container. By the end of this discussion, you'll have a much clearer understanding.

When purchasing a shipping container for storage, workspace, or a custom project, one of the most important factors to consider is the foundation or base it will sit on. While containers are built with durable Corten steel and can be placed directly on the ground, a stable and level base helps.

When it comes to setting up a shipping container —whether for storage, branding,



or shelter - building the right foundation is critical to making sure the container works properly. Without a solid, level base, you risk structural issues, water damage, and problems with opening and closing container.



Why do containers need base stations



[Shipping Container Foundations Guide](#)

Explore the different types of shipping container foundations, which one is right for your project, then how to design and build it!

Proper Foundation for a Shipping Container , Eveon Containers

Without a solid, level base, you risk structural issues, water damage, and problems with opening and closing container doors. Let's break down some of the best options for building the perfect ...



[The Best Foundation for Shipping Containers , Boxhub](#)

In this guide, we'll explore why foundations are essential for preserving the structural integrity of your shipping container, along with the best short- and long-term ...

[The Best Foundations for Shipping Containers](#)

Shipping units are made of tough steel, which is strong and durable. However, choosing the best base for a shipping container is just ...



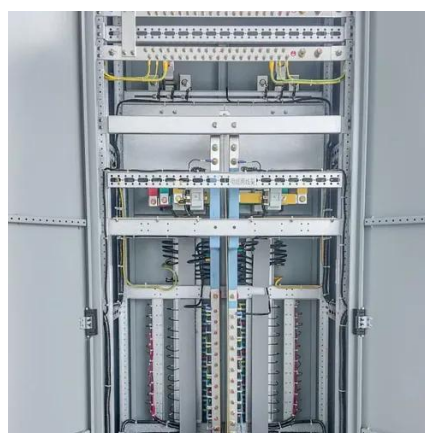
[Shipping Container Foundations: Complete Guide ...](#)

In high-wind or seismic zones, anchoring your container to a sturdy base is critical to prevent tipping or structural failure. If your ...



[Choosing Shipping Container Foundation: A Complete Guide](#)

While containers are built with durable Corten steel and can be placed directly on the ground, a stable and level base helps prevent structural issues, rust, and sinking over time.



[What's the Best Material to Set a Shipping ...](#)

Establishing a sturdy foundation is essential for shipping containers to withstand various environmental conditions. A well-laid ...





Choosing a Shipping Container Foundation

When building any kind of storage or living structure such as a shipping container house, the structure is only as good as its foundation. Even the flattest and most even ground ...

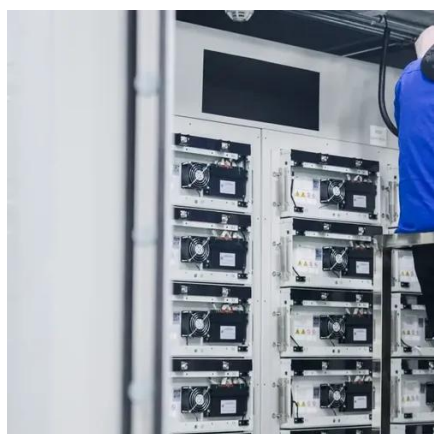


Shipping Container Foundations: Complete Guide to Choose the Right Base

In high-wind or seismic zones, anchoring your container to a sturdy base is critical to prevent tipping or structural failure. If your container is considered a permanent structure, ...

Do Shipping Containers Need a Foundation?

It's a choice that manages risk and provides a solid base for your container, regardless of the ground it sits on. So, when you're faced ...



What's the Best Material to Set a Shipping Container On?

Establishing a sturdy foundation is essential for shipping containers to withstand various environmental conditions. A well-laid foundation ensures the container's stability, ...



Do Shipping Containers Need a Foundation?

It's a choice that manages risk and provides a solid base for your container, regardless of the ground it sits on. So, when you're faced with poor soil conditions or high wind ...



Do You Need a Foundation for a Shipping Container?

Learn when a foundation is required for your shipping container and which types provide the best support based on placement ...

Proper Foundation for a Shipping Container

Without a solid, level base, you risk structural issues, water damage, and problems with opening and closing container doors. Let's break down ...



Choosing a Shipping Container Foundation

When building any kind of storage or living structure such as a shipping container house, the structure is only as good as its foundation. ...



The Best Foundation for Shipping Containers

In this guide, we'll explore why foundations are essential for preserving the structural integrity of your shipping container, along with ...



The Best Foundations for Shipping Containers

Shipping units are made of tough steel, which is strong and durable. However, choosing the best base for a shipping container is just as important. A poor foundation can ...



Do You Need a Foundation for a Shipping Container?

Learn when a foundation is required for your shipping container and which types provide the best support based on placement and purpose.



Choosing Shipping Container Foundation: A ...

While containers are built with durable Corten steel and can be placed directly on the ground, a stable and level base helps prevent ...



Contact Us

For inquiries, pricing, or partnerships:

<https://sccd-sk.eu>

Phone: +32 2 808 71 94

Email: info@sccd-sk.eu

Scan QR code for WhatsApp.

