



# Will the voltage of solar panels change when connected in parallel





## Will the voltage of solar panels change when connected in parallel

---

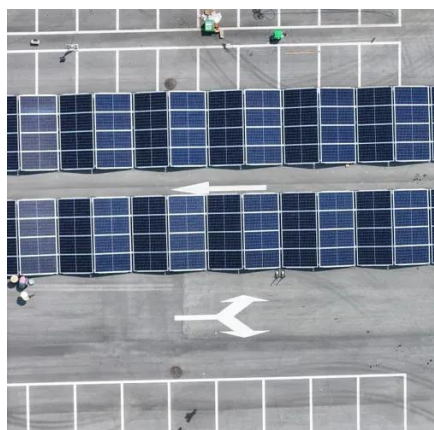


### [How Do Solar Panels Connect In Series Vs Parallel?](#)

Parallel connections join positives and negatives separately, summing currents while voltage stays fixed. For instance, two 24V panels in series create 48V, whereas parallel keeps 24V but ...

### [How To Wire Solar Panels In Series Vs. Parallel](#)

Wiring solar panels in parallel causes the amperage to increase, but the voltage remains the same. So, if you wired the same panels from before ...



### [Solar Panel Connection Methods: Series vs ...](#)

In terms of voltage, the total voltage after parallel connection is the same as that of a single panel. For example, if two 12V panels are ...

### [Solar Panel Connection Methods: Series vs Parallel Analysis](#)

In terms of voltage, the total voltage after parallel connection is the same as that of a single panel. For example, if two 12V panels are connected in



parallel, the total voltage ...



### Solar Panel Series vs Parallel: Which is Better?

Voltage: Unlike in series connections, the voltage remains constant in a parallel setup. It equals the voltage of a single panel. For example, if you ...



### How to Connect Solar Panels in Parallel

When building a solar power system, connecting solar panels in parallel is a practical way to increase current while keeping voltage ...



### **Connecting Solar Panels in Series or in Parallel? , EcoFlow JP**

Connecting solar panels in parallel increases amperage and keeps voltage constant. Series connections produce higher voltage while maintaining amperage, regardless ...



## Connecting Solar Panels in Series and Parallel: Full Wiring Guide

Understanding how connecting solar panels in series and parallel works is essential for building an efficient solar system. The wiring configuration you choose directly ...



### What does it increase when solar panels are connected in parallel

In parallel configurations, the voltage output remains unchanged, while the cumulative current emanating from the array increases. This attribute is crucial for solar ...

### What does it increase when solar panels are ...

In parallel configurations, the voltage output remains unchanged, while the cumulative current emanating from the array ...



**Outdoor Cabinet BESS**  
50 kWh/500 kWh Battery Storage System  
Industrial and Commercial Energy Storage



- All In One**  
Integrating battery packs
- High-capacity**  
50-500kWh
- Degree of Protection**  
IP54
- Operating Temperature Range**  
-20~60°C(Derating above 50 °C)
- Intelligent Integration**  
Integrated photovoltaic storage cabinet
- Rated AC Power**  
50-100kW
- Altitude**  
3000m(>3000m derating)

### Understanding Solar Panels in Parallel and Series Connections

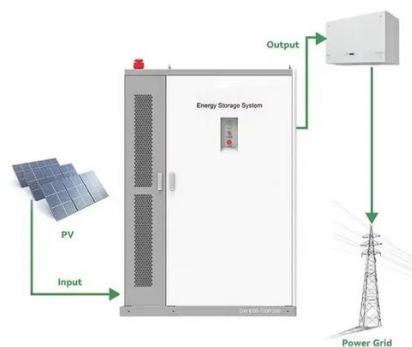
In a parallel connection, the positive terminals of all panels are connected together, and all negative terminals are connected together. This setup keeps the system voltage the ...





## How to Connect Solar Panels in Parallel

When building a solar power system, connecting solar panels in parallel is a practical way to increase current while keeping voltage constant. This setup is common in 12V ...



## How To Safely Connect Solar Panels In Series Or ...

Definition: In a parallel setup, all panel positive terminals are joined together, and all negative terminals are connected. Effect on ...

## How To Wire Solar Panels In Series Vs. Parallel

Wiring solar panels in parallel causes the amperage to increase, but the voltage remains the same. So, if you wired the same panels from before in parallel, the voltage of the system ...



## How To Safely Connect Solar Panels In Series Or Parallel

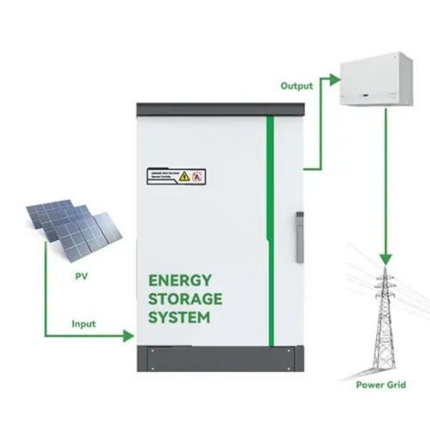
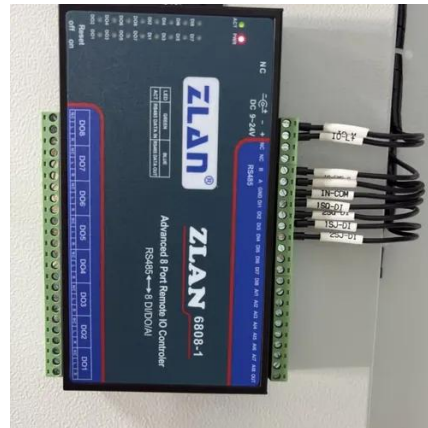
Definition: In a parallel setup, all panel positive terminals are joined together, and all negative terminals are connected. Effect on Voltage: Stays the same (e.g., two 12V panels ...





## Understanding Solar Panels in Parallel and Series ...

In a parallel connection, the positive terminals of all panels are connected together, and all negative terminals are connected together. ...



## Solar Panel Series vs Parallel: Which is Better? , Renogy US

**Voltage:** Unlike in series connections, the voltage remains constant in a parallel setup. It equals the voltage of a single panel. For example, if you have three panels each producing 30 volts, ...



## Contact Us

---

For inquiries, pricing, or partnerships:

<https://sccd-sk.eu>

Phone: +32 2 808 71 94

Email: [info@sccd-sk.eu](mailto:info@sccd-sk.eu)

Scan QR code for WhatsApp.

