



# Winter use plan for lithium iron phosphate energy storage





## Overview

---

Do lithium iron phosphate batteries need to be stored in winter?

As winter approaches, proper storage of Lithium Iron Phosphate (LiFePO<sub>4</sub>) batteries becomes crucial for maintaining their performance and longevity. These batteries are known for their safety, efficiency, and long cycle life, but they still require specific care during colder months.

Should you store LiFePO<sub>4</sub> batteries in winter?

In conclusion, storing your LiFePO<sub>4</sub> batteries properly during winter is essential for maintaining their performance and longevity. By adhering to best practices such as monitoring charge levels and ensuring ideal storage conditions, you can maximize the efficiency of your batteries when you need them most.

Should LiFePO<sub>4</sub> batteries be kept at freezing temperature?

Therefore, keeping LiFePO<sub>4</sub> batteries at freezing temperature is good for long-term battery storage health. However, the battery self-degradation rate should be considered. It is best to charge the battery to 40% to 50% of its capacity to keep it in optimal condition under these circumstances.

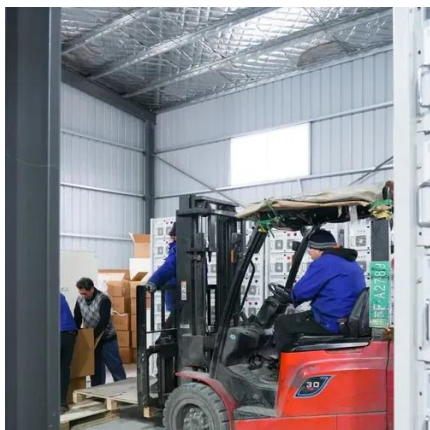
Why is storing LiFePO<sub>4</sub> batteries important?

Properly storing LiFePO<sub>4</sub> batteries is crucial to ensure that they have a long life and to prevent any potential hazards. Compared to traditional lead-acid batteries, these batteries are gaining more popularity because of their eco-friendliness, high energy density, and light-weight design.



## Winter use plan for lithium iron phosphate energy storage

---



### [Storage Guide for Lithium Iron Phosphate Batteries: A ...](#)

This guide dives deep into LFP battery storage best practices, demystifying temperature, humidity, charging protocols, and physical safeguards to help you maximize performance and ...

### [12V LiFePO4 Battery: Winter Operation Guide](#)

Seasonal off-grid sites, mobile units parked for long periods, and backup systems in cold warehouses all benefit from a storage plan. ...



### **Best Lithium Batteries for Cold Weather , Reliable Off-Grid Power in Winter**

To get the most out of your lithium battery system during cold weather, follow these essential tips: 1. Use Batteries with Built-In Heating. Modern lithium batteries often include a built-in heating ...

### **Winter Storage Tips for Lithium Iron Phosphate (LiFePO4) Batteries**

Cold temperatures can impact battery efficiency, but with the right precautions, you can protect your investment. Discover essential tips for safely





storing LiFePO4 batteries during winter ...



### [How to Winterize Your LiFePO4 Batteries for ...](#)

However, as winter approaches, proper care is essential to ensure these batteries perform optimally and avoid damage caused by ...

### [Best Lithium Batteries for Cold Weather, Reliable ...](#)

To get the most out of your lithium battery system during cold weather, follow these essential tips: 1. Use Batteries with Built-In Heating. Modern lithium ...



### **Winter-Proofing Your Lithium Iron Phosphate Batteries: How to ...**

From heating systems and insulation to smart charging and proper storage, these steps will help ensure that your batteries remain efficient and functional throughout the winter ...



## 12V LiFePO4 Battery: Winter Operation Guide

Seasonal off-grid sites, mobile units parked for long periods, and backup systems in cold warehouses all benefit from a storage plan. Ideally, the 12V LiFePO4 battery sits in a ...



## How Do You Store LiFePO4 Batteries in the Winter?

To store LiFePO4 batteries in the winter, keep them in a cool, dry place with temperatures between 32°F and 77°F (0°C to 25°C). Ensure they are charged to about 50% ...

## Winter Storage Tips for Lithium Iron Phosphate ...

Cold temperatures can impact battery efficiency, but with the right precautions, you can protect your investment. Discover essential tips for ...



## How to Winterize Your LiFePO4 Batteries for Maximum ...

However, as winter approaches, proper care is essential to ensure these batteries perform optimally and avoid damage caused by low temperatures. This guide provides a ...



## Storing LiFePO4 Batteries for Winter: Tips for Performance

For optimal winter storage, it is recommended that LiFePO4 batteries be maintained at a state of charge (SOC) between 40% and 60%. This level helps prevent over ...



## A Comprehensive Guide on How to Store LiFePO4 Batteries

Properly storing LiFePO4 batteries is crucial to ensure that they have a long life and to prevent any potential hazards. Compared to traditional lead-acid batteries, these ...

## Storing LiFePO4 Batteries for Winter: Tips for ...

For optimal winter storage, it is recommended that LiFePO4 batteries be maintained at a state of charge (SOC) between 40% and ...



## A Complete Guide to Using Lithium Batteries in Cold Weather

To maximize performance and safety when using lithium batteries in the cold, follow these tips:



## Contact Us

---

For inquiries, pricing, or partnerships:

<https://sccd-sk.eu>

Phone: +32 2 808 71 94

Email: [info@sccd-sk.eu](mailto:info@sccd-sk.eu)

Scan QR code for WhatsApp.

